



# Concept of operation RNLAF; "SCENARIO FORECASTING"

## Military Operations



### Recourses

- Assets
- Exercise areas

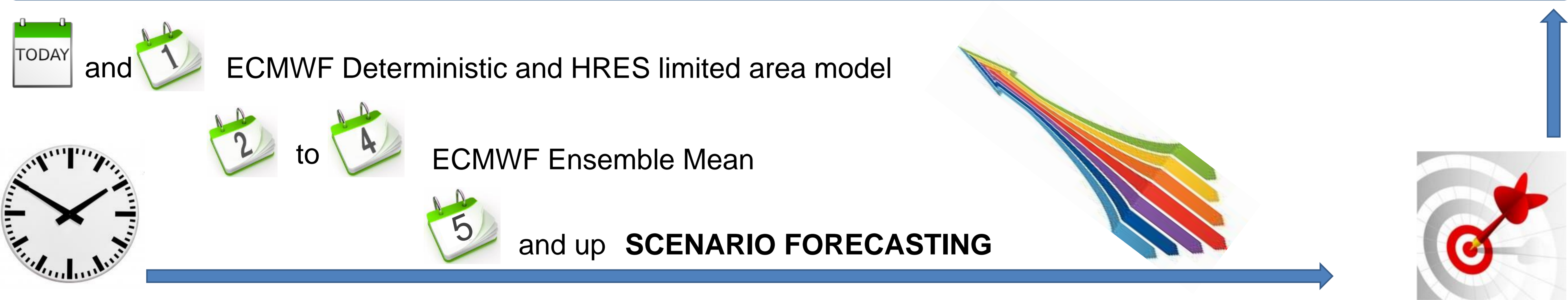
### Operations

- Multinational
- More complex

### Planning

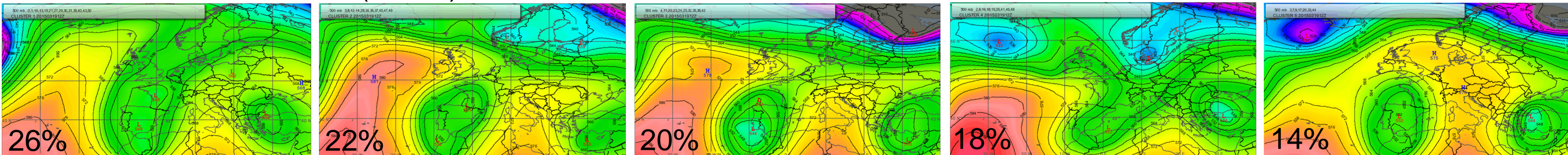
- Time increases
- Becomes crucial

## Weather Support



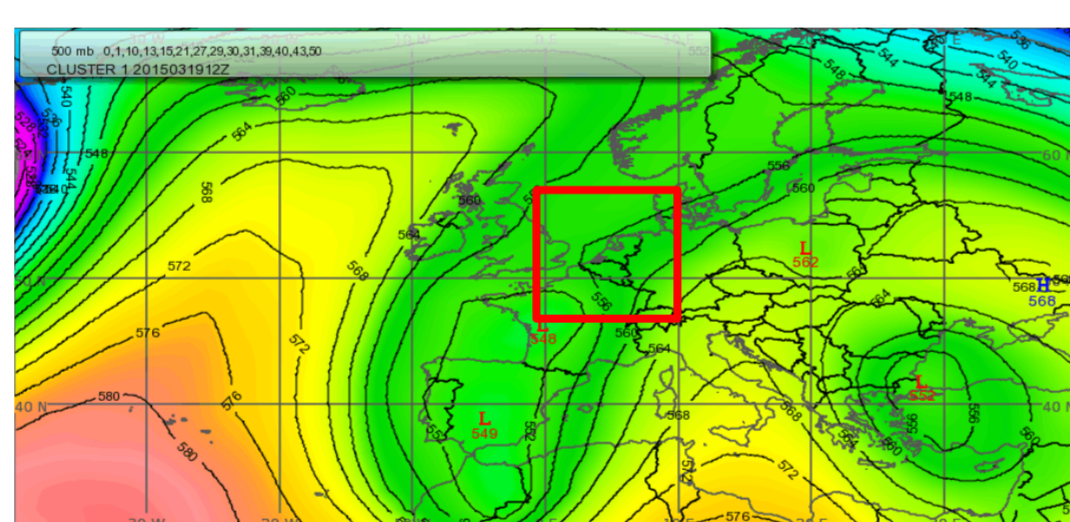
## SCENARIO FORECASTING

ECMWF 500hPa Clusters (max 6)



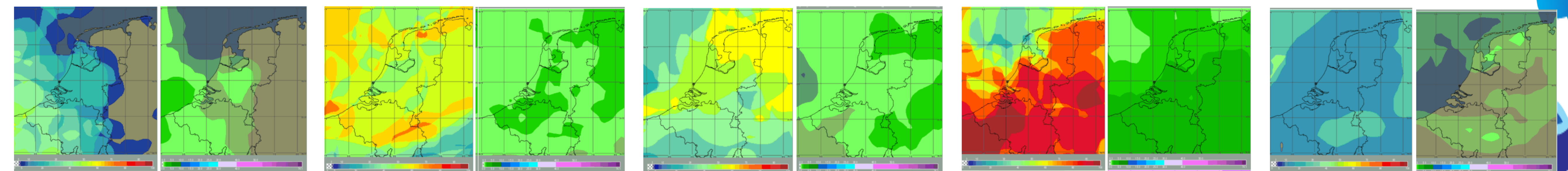
### Forecaster in the loop (FITL)

1. Select area of interest (AOI)
2. Define area/mission key parameters



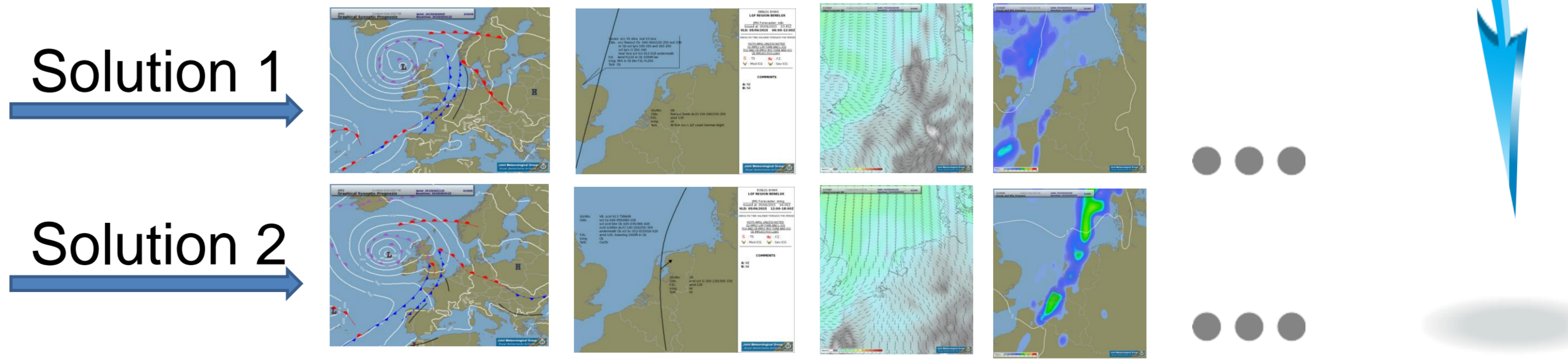
### Automated product generation (APG)

1. Selected AOI
2. Defined area/mission key parameters



### FITL - 2

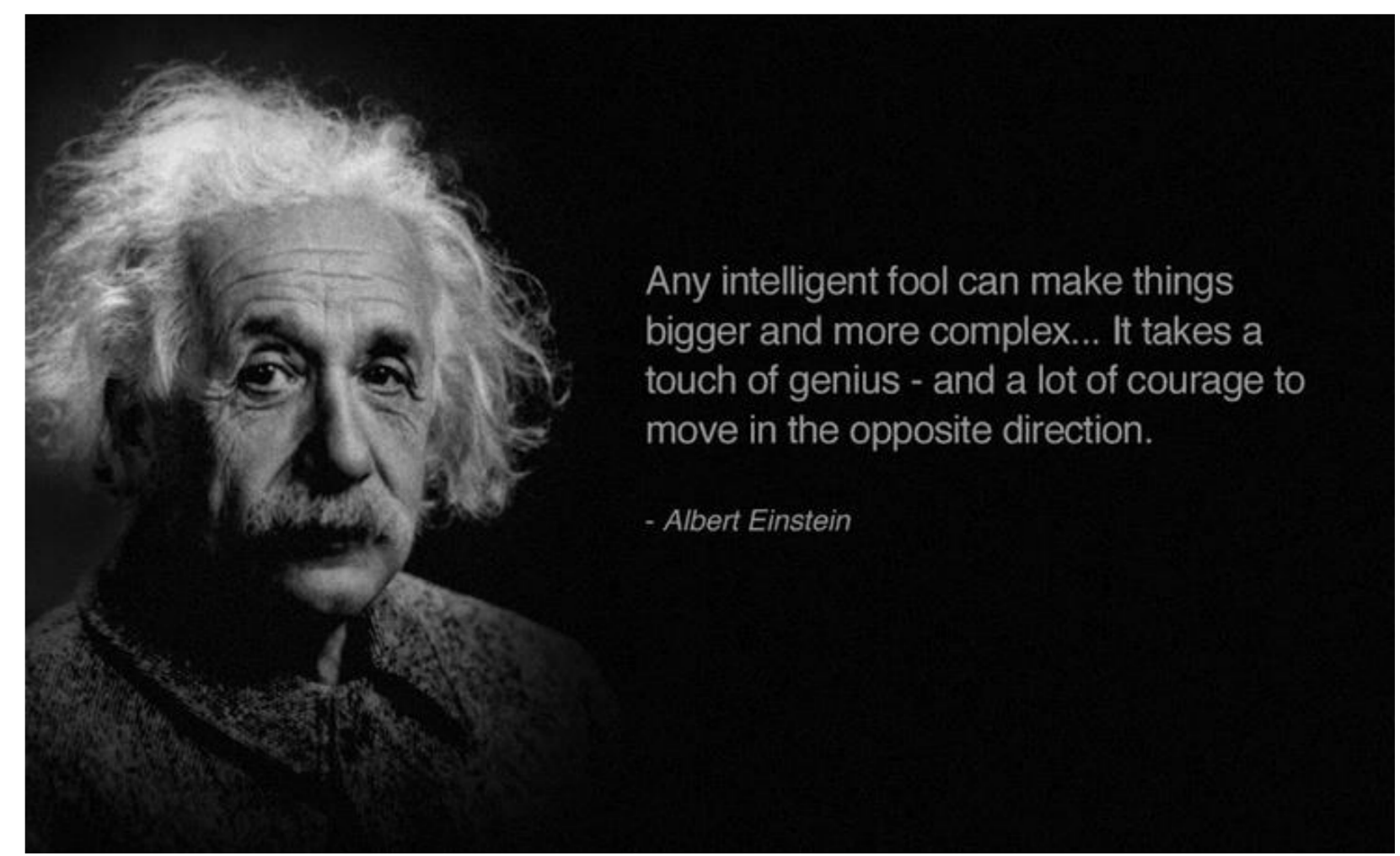
1. Merge area/mission similar area/mission solutions
2. Merge ECMWF clusters
3. Produce APG and FITL Forecasts
4. Present limited amount and familiar products to customer



### Lesson Learned

- Guide your customer:**
1. don't confuse them, limit options;
  2. use familiar products;
  3. let them make the decisions.

RNLAF Joint Meteorological Group



# It's better to be roughly right than precisely wrong!