

Weather at Home: large ensemble regional climate modelling

Neil Massey, Friederike Otto, Sarah Sparrow and Myles Allen
Environmental Change Institute, University of Oxford

Richard Jones and Simon Wilson
UK Met Office

Andy Bowery, Jonathan Miller and David Wallom
Oxford e-Research Centre, University of Oxford

The *climateprediction.net* volunteers
Everywhere!



Environmental Change Institute



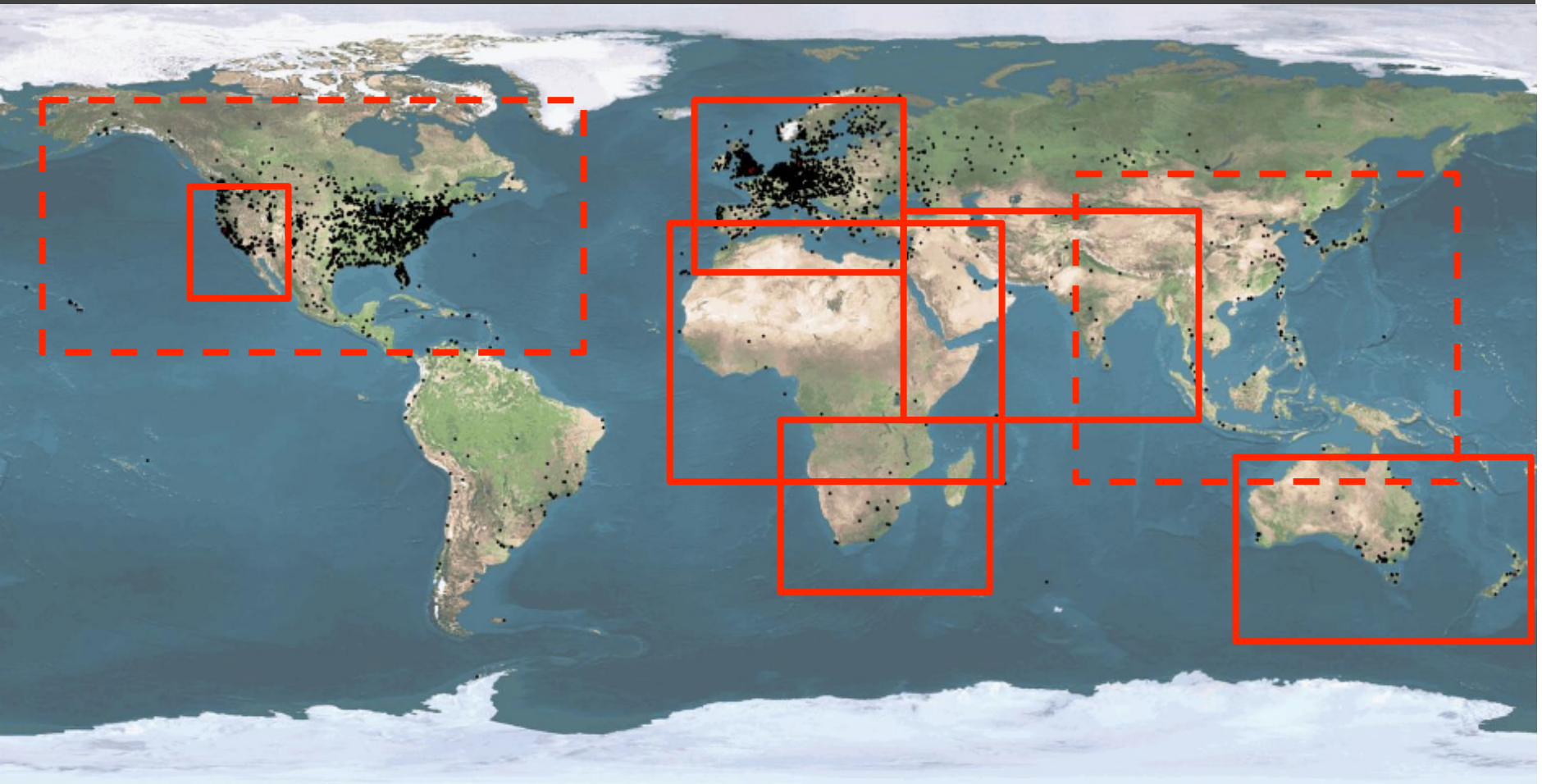
Outline

- What is Weather at Home?
- Experimental setup
- What we have used it for, so far
- What we could use it for in the future

The weather at home project

- Largest regional climate modelling project ever undertaken
- Uses a regional climate model (RCM) nested inside a global climate model (GCM)
- Models are HadAM3P and HadRM3P – same as PRECIS
- Volunteer distributed computing is used to compute many thousands of ensemble members
- The BOINC VDC system is used (cf SETI@home, Rosetta, Einstein, etc.)

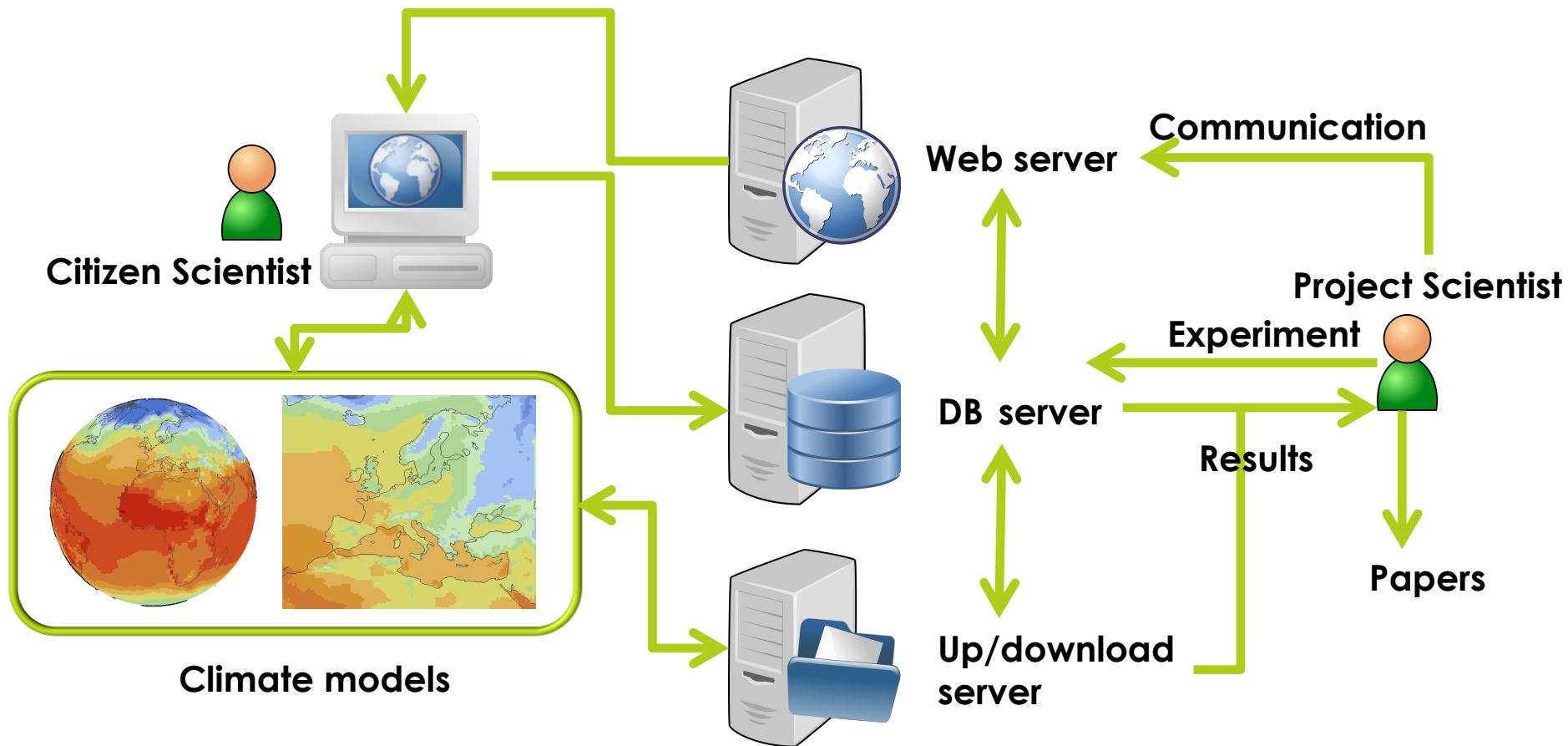
Regions



Regions - collaborations

- Currently three regions modelled:
 - Europe and the North Atlantic - Oxford
 - Pacific North West of USA – Phil Mote, University of Oregon
 - Southern Africa – Bruce Hewitson, University of Cape Town
- Three new regions available shortly:
 - Australia and New Zealand – David Karoly, Uni of Melbourne
 - South West Asia – R. Krishnan, IITM, Pune, India
 - East, West and North Africa – Oxford (ACE Africa)
- System has potential to model any region

Volunteer distributed computing



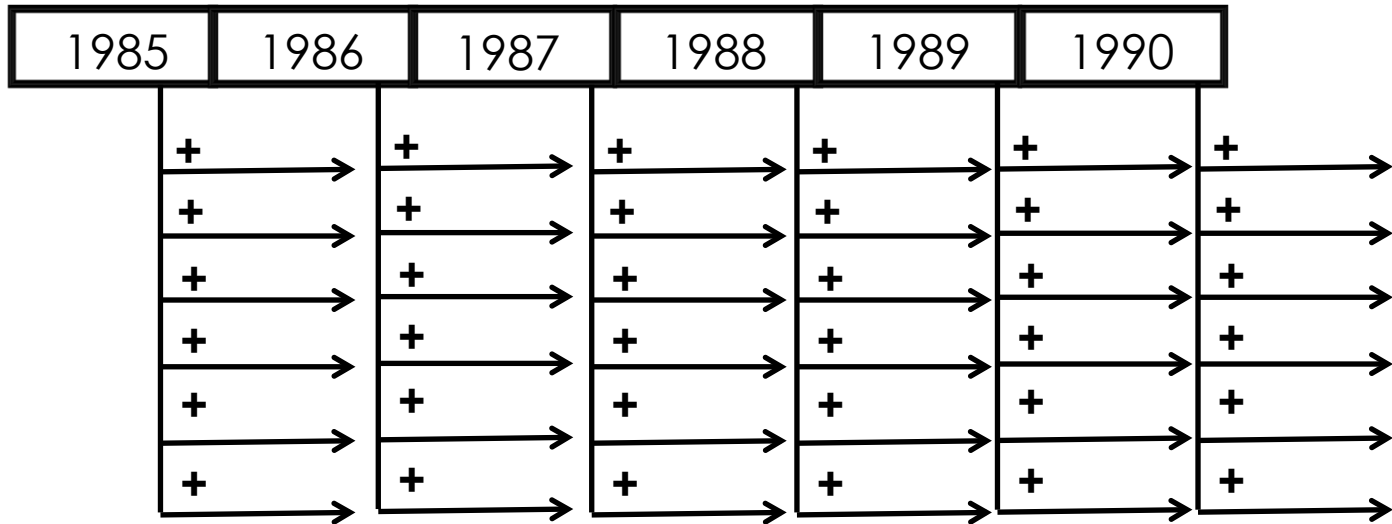
GCM and RCM

- The GCM runs independently on the client computer
- There is no nudging, or relaxing to (e.g.) ERA-40 conditions – completely free-running atmosphere
- The GCM is forced by observations of sea-surface temperatures (SST) and sea-ice fraction (SIF), along with concentrations of greenhouse gases (GHG), aerosols, etc.
- The RCM is forced at its boundaries by output from the GCM

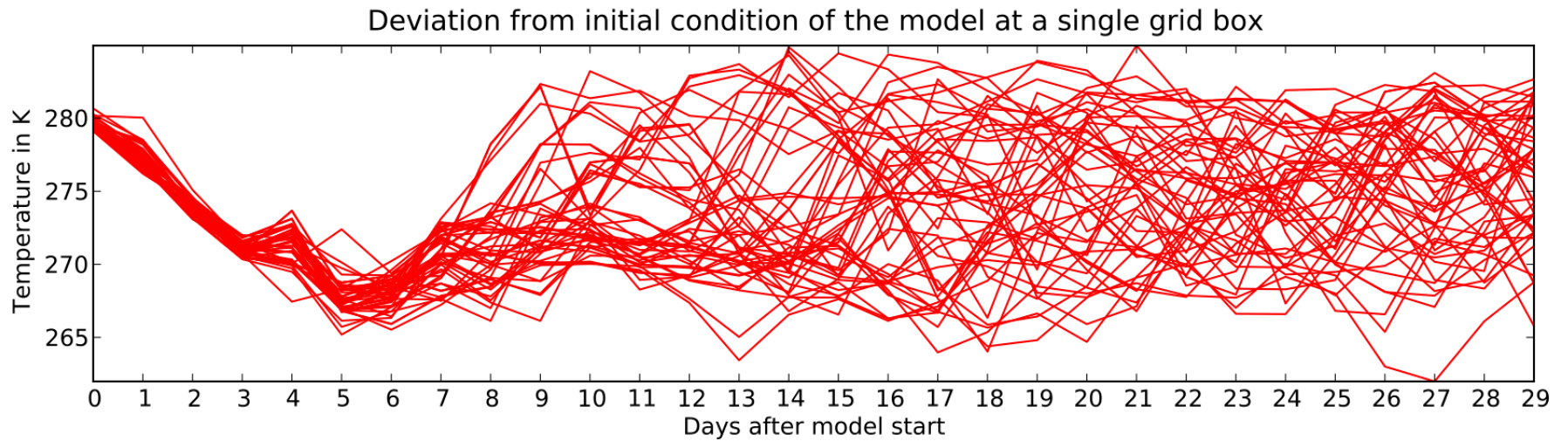
Experimental setup

- Each client computer runs one ensemble member at once
- Each ensemble member is given a description of the experiment to run (the workunit)
- This includes the GHG forcing, SST & SIF, the year, and the initial condition (IC)
- The IC is derived from a single long model run of the same GCM & RCM, using the same forcings as the distributed experiment
- There is one IC per year but each ensemble member gets a (unique) perturbation to the IC

Initial condition perturbations



Initial condition perturbations

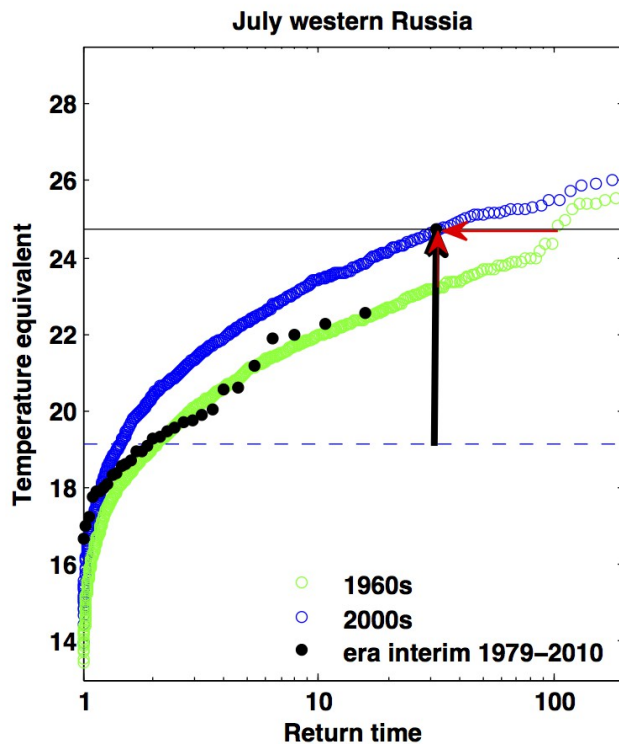


Current completed experiments

- HadISST forced SSTs and SIF, observed GHG and other forcings, 1960 to 2010, for PNW, SAF and EU
- OSTIA forced SSTs and SIF, observed GHG and other forcings, 1985 to 2012, for EU region only
- One natural ensemble, OSTIA SSTs with global warming pattern due to GHG removed

Results – Russian heatwave 2010

- Otto et al 2012 (GRL)
- Reconciling two different conclusions for the human contribution to the Russian heatwave of 2010
 - Dole (2011): “mainly natural in origin”
 - Rahmstorf & Coumou (2011) – 80% probability that occurrence due to anthropogenic climate change
- Again, large ensemble of GCMs with 1960s scenario and 2000s scenario

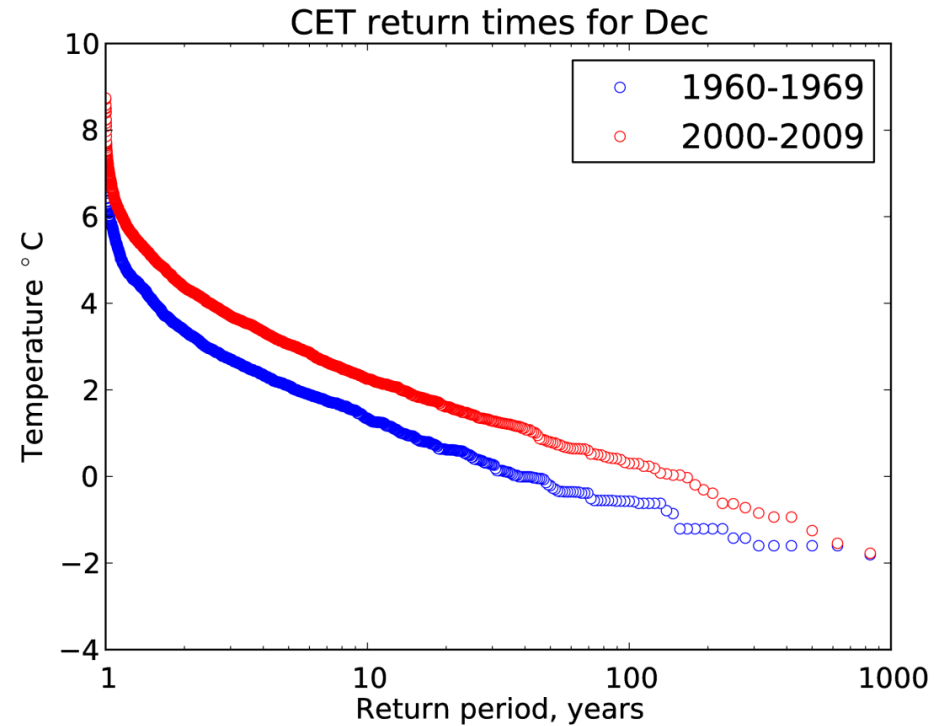
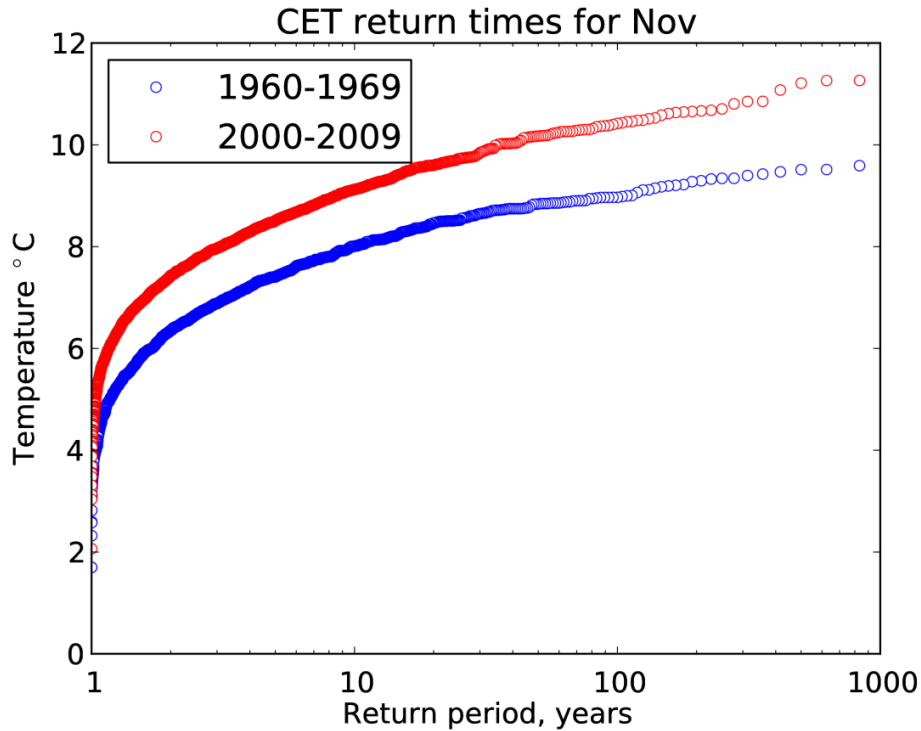


- Black line: anomaly from Russian mean summer temperature
- Red line: difference in return time between 1960s and 2000s
- Vertical: proportion that can be attributed to anthropogenic climate change

- Conclusion: While the temperature value could occur within the observations (Dole), the probability of occurrence has increased (Rahmstorf)

Results – UK autumns / winters

- Massey et al 2012
- Have the odds of getting a warm November or cold December in the UK changed between 1960 and 2000?
- Two large ensembles produced via volunteer computing, one for 1960 to 1969, one for 2000 to 2009
- Both have observed forcings for their scenarios
- Comparing the change in return period of the cold December 2010 (2nd coldest on record) and the warm November 2011 (2nd warmest on record)



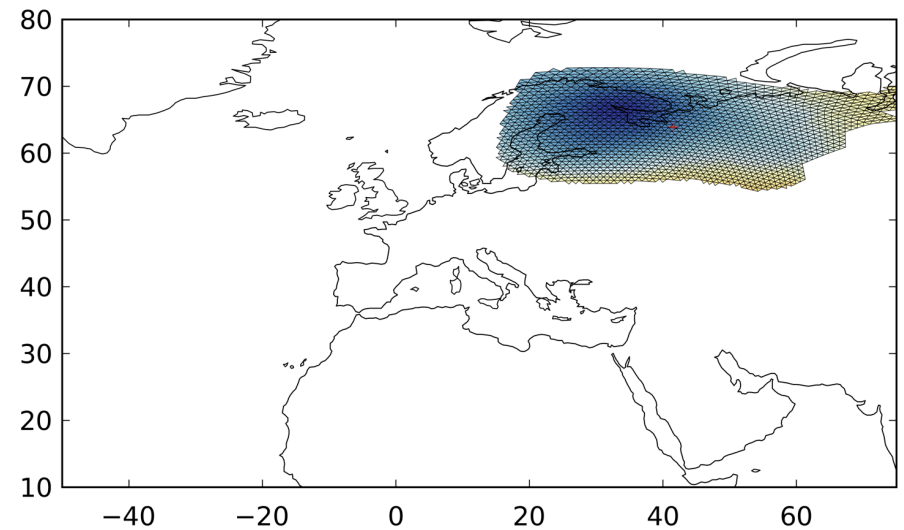
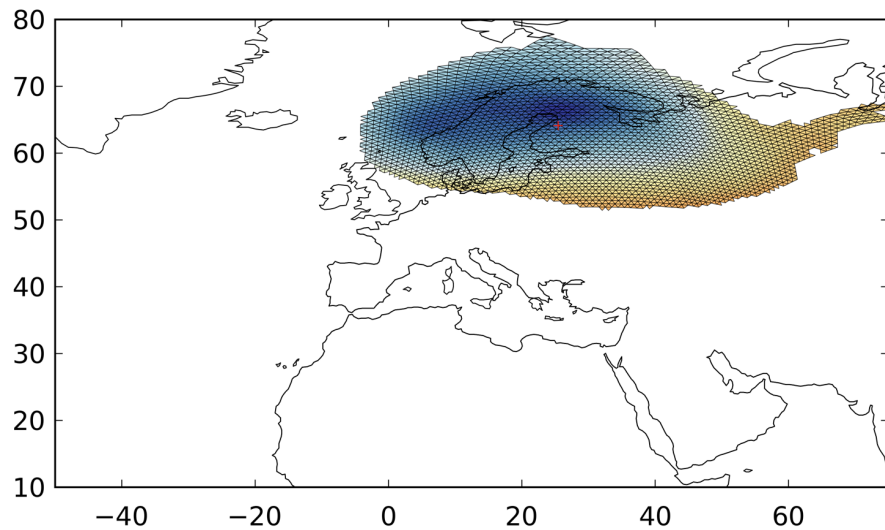
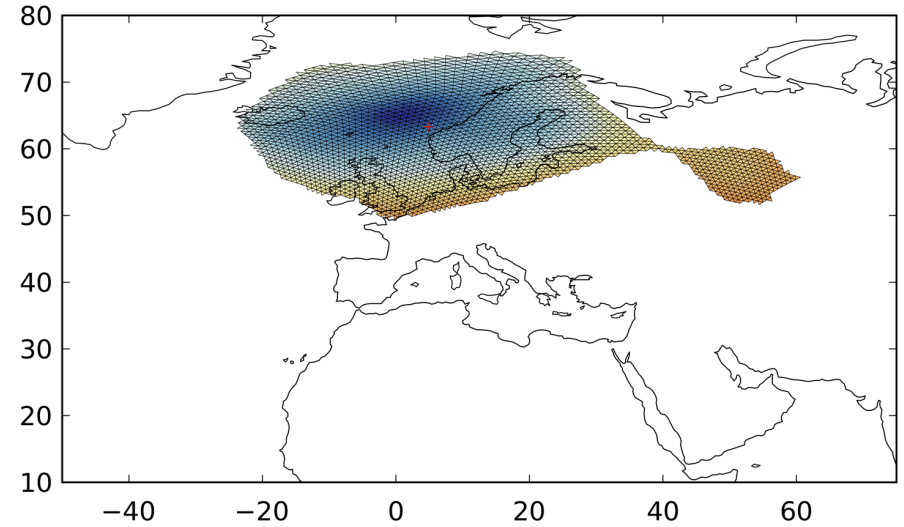
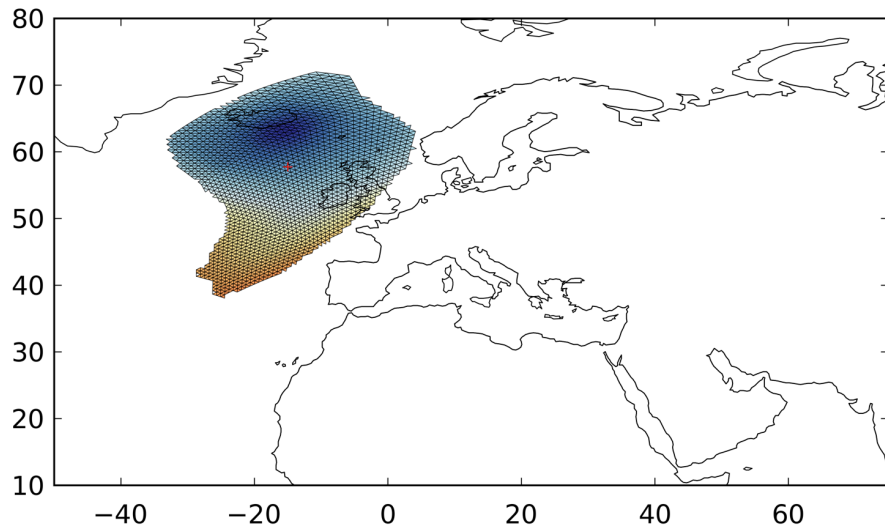
Conclusions:

- The warm November of 2011 (2nd in CET), will occur 62 times more frequently in the 2000s than in the 1960s
- The cold December of 2010 (2nd coldest in CET) is half as likely to occur in the 2000s than in the 1960s

Future work – probabilistic event attribution

- 10 000 to 100 000 model simulations over a historical period
- Objective feature detection and tracking
 - Detecting extreme events in the output from the VLE
 - Tracking events over the lifecycle of the event
- Defining a probabilistic event set
 - Probability distributions of severity of events
 - Specific examples of events
 - Can then drive a cat model in a probabilistic manner

Probabilistic event sets



Future work – seasonal attribution

- Instead of attributing events after they occur, attempt to quantify the increase in risk of an event occurring within the next season.
- Use the ensemble of SSTs and SIF from the seasonal forecast.
- “Spin up” the model to get initial conditions consistent with the beginning of the season.
- Produce the large ensemble of GCM driven RCMs via VDC
- Identify the extreme events and quantify their change in risk