

Understanding advances in the simulation of intraseasonal variability in the ECMWF model.

Part II: The application of process-based diagnostics

L. C. Hirons<sup>1</sup>, P. Inness<sup>1</sup>, F. Vitart<sup>2</sup>,  
P. Bechtold<sup>2</sup>

Research Department

<sup>1</sup>Department of Meteorology, University of Reading, Earley Gate, PO  
Box 243, Reading, RG6 6BB  
<sup>2</sup>ECMWF

To be submitted to Q. J. R. Meteorol. Soc

June 26, 2012

*This paper has not been published and should be regarded as an Internal Report from ECMWF.*

*Permission to quote from it should be obtained from the ECMWF.*



Series: ECMWF Technical Memoranda

A full list of ECMWF Publications can be found on our web site under:

<http://www.ecmwf.int/publications/>

Contact: [library@ecmwf.int](mailto:library@ecmwf.int)

©Copyright 2012

European Centre for Medium-Range Weather Forecasts  
Shinfield Park, Reading, RG2 9AX, England

Literary and scientific copyrights belong to ECMWF and are reserved in all countries. This publication is not to be reprinted or translated in whole or in part without the written permission of the Director-General. Appropriate non-commercial use will normally be granted under the condition that reference is made to ECMWF.

The information within this publication is given in good faith and considered to be true, but ECMWF accepts no liability for error, omission and for loss or damage arising from its use.

## Abstract

In Part I of this study it was shown that moving from a moisture-convergent- to a relative-humidity-dependent organised entrainment rate in the formulation for deep convection was responsible for significant advances in the simulation of the Madden-Julian Oscillation (MJO) in the ECMWF model. However, the application of traditional MJO diagnostics were not adequate to understand why changing the control on convection had such a pronounced impact on the representation of the MJO.

In this study a set of process-based diagnostics are applied to the hindcast experiments described in Part I to identify the physical mechanisms responsible for the advances in MJO simulation. Increasing the sensitivity of the deep convection scheme to environmental moisture is shown to modify the relationship between precipitation and moisture in the model. Through dry-air entrainment, convective plumes ascending in low-humidity environments terminate lower in the atmosphere. As a result, there is an increase in the occurrence of cumulus congestus, which acts to moisten the mid-troposphere. Due to the modified precipitation-moisture relationship more moisture is able to build up which effectively preconditions the tropical atmosphere for the transition to deep convection. Results from this study suggest that a tropospheric moisture control on convection is key to simulating the interaction between the convective heating and the large-scale wave forcing associated with the MJO.

## 1 Introduction

Part I of this study (Hirons *et al.*, 2012, hereafter referred to as H12) examined the representation of the Madden-Julian oscillation (MJO) in the ECMWF Integrated Forecasting System (IFS). Hindcast experiments (CONV, ENTRN and CAPE; Table I, H12), which differ only in their formulation of convection, were compared with control versions of the IFS (Cy31r1 and OPER) and observations during the YOTC (Year of Tropical Convection) period from May 2008 to April 2009. The hindcast experiments were designed to test the sensitivity of MJO simulation to recent modifications to the model physics introduced in Cycle 32r3 (Cy32r3) of the IFS. Bechtold *et al.* (2008) (hereafter B08) showed that changes to the convection and vertical diffusion schemes in Cy32r3 led to a more realistic representation of convectively coupled equatorial Kelvin and Rossby waves, as well as improving the simulation of tropical intraseasonal variability associated with the MJO. H12 established that the improved representation of the MJO in the post-Cy32r3 IFS could be directly attributed to modifications to the convection scheme. The Cy32r3 convective parameterization included two modifications to the formulation of deep convection, (a) a variable CAPE adjustment timescale,  $\tau$ ; and (b) changing the dependence of the formulation for organised entrainment from a moisture-convergent-dependent formulation ( $\epsilon_{org}^{MC}$ ) to one dependent on environmental humidity ( $\epsilon_{org}^{RH}$ ).

When multiple changes are implemented in an NWP model, as with those in Cy32r3 of the IFS, it is usually only possible to speculate about the effect of individual modifications. However, the hindcast experiments described in H12 present a unique opportunity to isolate the effect of individual components of the IFS convective parameterization on the simulation of the MJO. It was shown in H12 that increasing the sensitivity of convection to environmental moisture led to an increase in the variance of convective activity and eastward propagating spectral power associated with the MJO. Although the application of recognised MJO diagnostics (Waliser *et al.*, 2009) in H12 enabled the full description of the representation of the MJO it did not give insight into the physical mechanisms responsible for the observed advances in simulation. Therefore, this paper addresses the conclusion from H12, that a more process-based approach should be taken.

After a brief summary of the experimental setup that was applied in H12 (section 2.1) and the analysis techniques used in this paper (sections 2.2-2.3), the focus will turn to the affect that the modifications

in the Cy32r3 convective parameterization had on the mean state of the IFS (sections 3.1-3.3). The results of applying the process-based diagnostics introduced in section 2.3 will be presented in sections 4.1-4.4. Finally, discussion of the results and overall conclusions will be presented in sections 5 and 6 respectively.

## 2 Methodology

### 2.1 Summary of experiments

The model description and experimental setup are described fully in section 2.1 of H12. For ease the summary Table from H12 is reproduced here (Table I). Comparing (a) OPER and CONV, (b) CAPE and CONV and (c) OPER and CAPE isolates the effect of (a) the Cy32r3 convective parameterization ( $\epsilon_{org}^{RH}$  formulation and  $\tau$ ), (b) the  $\epsilon_{org}^{RH}$  formulation and (c) the variable  $\tau$ . The inclusion of the ENTRN experiment addresses the relative importance of the entrainment rate versus formulation of organised entrainment.

Table 1: Summary of IFS comparisons which isolate the effects of individual model modifications

Convection Modification	IFS Comparison
Cy32r3 ( $\epsilon_{org}^{RH}$ & $\tau$ )	OPER-CONV
$\epsilon_{org}^{RH}$ formulation	CAPE-CONV
$\tau$	OPER-CAPE
$\epsilon_{org}^{RH}$ rate	OPER-ENTRN

### 2.2 The mean state

The mean state of a model is thought to be important to the dynamics of the MJO (e.g. Ray *et al.*, 2011). Modelling studies have shown that improving the quality of the background state, through flux-adjustment techniques, can lead to a better representation of the MJO (e.g. Inness *et al.*, 2003; Sperber *et al.*, 2005). For example, Inness *et al.* (2003) showed that mean low-level and surface westerlies favour MJO development, a hypothesis confirmed in observations by Zhang *et al.* (2006). Furthermore, the background state of a model is crucial to instability theories of the MJO, such as wave-CISK, where the distribution of low-level environmental moisture defines the growth rate and propagation speed of the MJO.

To understand why the introduction of the modified parameterization of convection in Cy32r3 so dramatically improved the simulation of the MJO, it is important to quantify the impact of the new scheme on the basic state of the model. In an NWP model like the IFS, the basic state is not constant, but evolves with increasing forecast lead-time. The aim of the analysis in sections 3.1-3.3 is to understand whether the new convection scheme has resulted in a favourable background state for the initiation and evolution of the MJO. More specifically, results from H12 show that the relative-humidity-dependent formulation for entrainment ( $\epsilon_{org}^{RH}$ ) is largely responsible for increasing variability on intraseasonal timescales. Therefore, it is important to understand how this new formulation of organised entrainment has changed the mean state of the IFS (sections 3.1-3.3).

## 2.3 Process-based diagnostics

The MJO diagnostics applied in H12 showed that modifications to the convective parameterization in Cy32r3 led to advances in the simulation of the MJO (summarised in Figure 7, H12). Unique to H12 was the attribution of those improvements in MJO simulation to the modified relative-humidity-dependent formulation for organised entrainment. Despite this attribution, the MJO diagnostics applied in H12 have not shown why changing from a moisture-convergence- to a relative-humidity-dependent formulation for organised entrainment resulted in such pronounced advances in MJO simulation. A set of process-based diagnostics, (a)-(d) described below, are applied to the IFS output in sections 4.1-4.4 too understand the physical mechanisms underlying the advances shown in H12.

**(a) TCW - precipitation statistics:** Through analysis of four years of tropical rainfall and column water vapour satellite measurements, Bretherton *et al.* (2004) showed that there was a direct, non-linear relationship between precipitation and the total amount of water in the atmospheric column (TCW). According to their study, the relationship between humidity and rainfall could be an efficient test of a model's ability to simulate deep convection in the tropics. A similar diagnostic is applied in section 4.1.

**(b) Parameters binned based on precipitation:** Previous studies have investigated the efficiency of convective moistening in the tropics by compositing or binning parameters, such as relative humidity and temperature, based on precipitation (Thayer-Calder and Randall, 2009; Zhu *et al.*, 2009). The sensitivity of the relationship between precipitation and various parameters to the formulation of  $\epsilon_{org}^{RH}$ , the variable adjustment timescale  $\tau$  and the rate of  $\epsilon_{org}^{RH}$  is investigated (section 4.2).

**(c) Vertical structure of moisture:** Since H12 showed that, with the modified convective parameterization, the IFS is able to reproduce a realistic MJO, the April 2009 case study is used to analyse the role of moisture throughout the passage of an MJO (section 4.3).

**(d) Temperature and moisture tendencies:** Investigation of the model physics tendencies through the passage of the April 2009 MJO case study (section 4.4).

## 2.4 Definition of equatorial regions and MJO metric

Table 2: Definition of equatorial ( $10^{\circ}N-10^{\circ}S$ ) regions

Abbreviation	Longitude
IOW	$60^{\circ} - 80^{\circ}E$
IOE	$80^{\circ} - 100^{\circ}E$
MCW	$90^{\circ} - 110^{\circ}E$
MCE	$110^{\circ} - 130^{\circ}E$
WPW	$120^{\circ} - 140^{\circ}E$
WPE	$140^{\circ} - 160^{\circ}E$

The process-based diagnostics described above have been applied to six equatorial areas in the Indo-Pacific region (Table 2). Throughout the regions will be referred to by the abbreviations in Table 2: Western and Eastern Indian Ocean (IOW and IOE), Maritime Continent (MCW and MCE) and West Pacific (WPW and WPE). To define a metric of MJO activity, 20-100 day band-pass filtered OLR from the AVHRR satellite has been averaged over each of the six equatorial regions. Active, suppressed and weak MJO days are defined as days below, above and within one standard deviation of the mean filtered

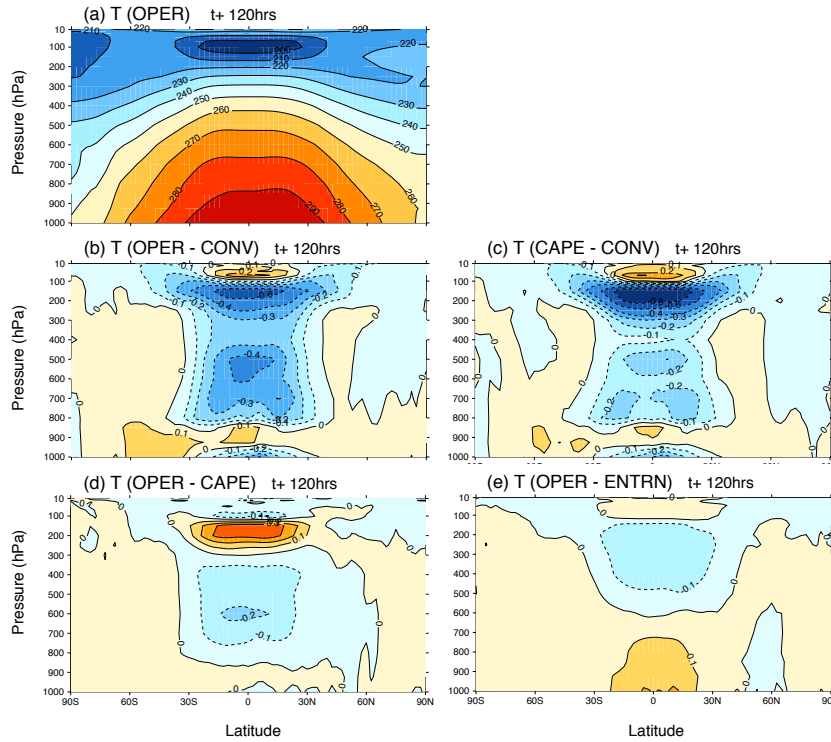


Figure 1: (a) Zonal-mean temperature from OPER at a 5-day forecast lead time. (b) Zonal-mean temperature difference between OPER and CONV (effect of Cy32r3) at a 5-day forecast lead time. (c)-(e) as in (b) but difference between (c) CAPE and CONV (effect of  $\epsilon_{org}^{RH}$  formulation), (d) OPER and CAPE (effect of  $\tau$ ), and (e) OPER and ENTRN (effect of  $\epsilon_{org}^{RH}$  rate). The zonal mean is calculated for the period from May 2008 to April 2009 using all longitudes.

OLR, respectively. Throughout reference will continually be made to both the equatorial regions and MJO metric.

### 3 The role of the mean state

#### 3.1 The zonal-mean vertical structure of T, q

The initial analysis will focus on the zonal-mean structures of temperature and specific humidity. Figure 1 (a) shows the vertical structure of the zonal-mean temperature at a 5-day forecast lead time from OPER. Recalling Table 1, Figure 1 (b) shows that the effect of the modified convective parameterization in Cy32r3 is to cool the depth of the troposphere between 30°S and 30°N, with the exception of a thin layer between 950 hPa and 850 hPa. The largest cooling, of about 0.6K, occurs in the tropical upper-troposphere between 100 hPa and 200 hPa. The Cy32r3 convective parameterization warms the tropical stratosphere between 20°S and 20°N by up to 0.2K. The cooling suggests that there is, on average, less convection penetrating into the upper-troposphere in the post-Cy32r3 IFS. The magnitude of the temperature anomalies is relatively small, indicative of the homogeneous distribution of temperature in the tropics. The spatial structure of the difference in zonal-mean temperature in Figure 1 (c) is similar to that in Figure 1 (b), suggesting that the cooling throughout the tropical troposphere is a consequence

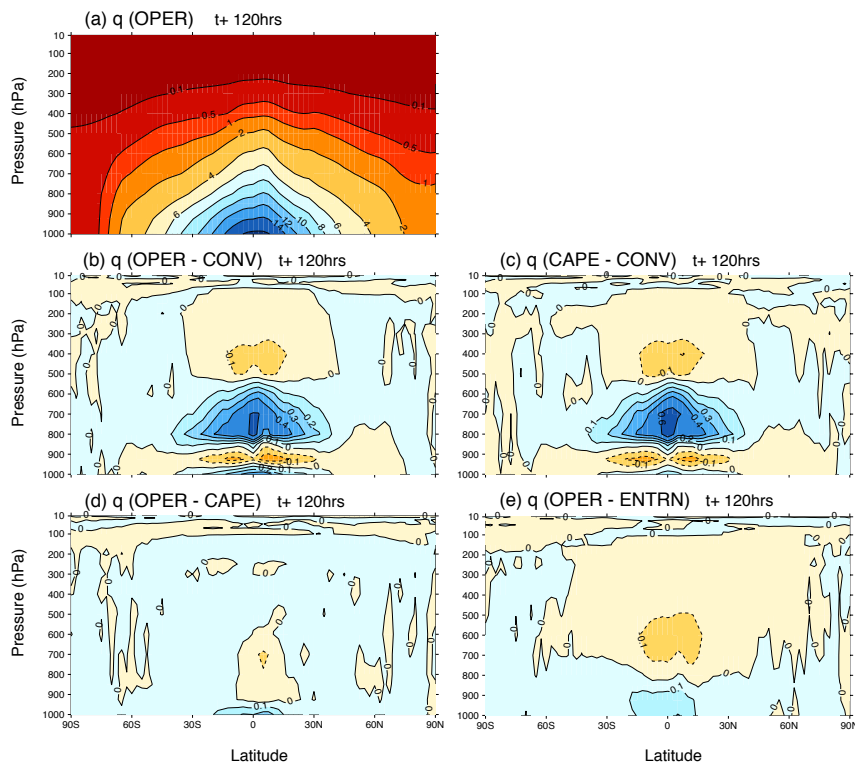


Figure 2: As Figure 1, but for zonal-mean specific humidity.

of the  $\epsilon_{org}^{RH}$  formulation. In the mid- and lower-troposphere (upper-troposphere), with only the effect of  $\epsilon_{org}^{RH}$ , the cooling signal is reduced (increased) by approximately 0.2K, compared to the combined effects of  $\epsilon_{org}^{RH}$  and  $\tau$ . The mean reduction in active convection shown by the cooling here, combined with the better representation of the MJO (H12) suggest that an effect of  $\epsilon_{org}^{RH}$  is to prevent the triggering of spurious deep convection. The introduction of the variable  $\tau$  in the closure for deep convection had a warming effect in the upper-troposphere with a maximum magnitude above 0.3K at 200 hPa (Figure 1 (d)). Halving the rate of  $\epsilon_{org}^{RH}$  had little effect on the vertical structure of zonal-mean temperature at a 5-day forecast lead time: Figure 1 (e) shows a slight warming (cooling) in the lower-troposphere (mid- and upper-troposphere) of about 0.1K.

A further effect of the Cy32r3 convective parameterization, or more specifically the  $\epsilon_{org}^{RH}$ , is to weaken the subtropical jets by up to  $1 \text{ m s}^{-1}$  at approximately 100 hPa between  $20^\circ\text{N}$  and  $20^\circ\text{S}$ , above and equatorward of their maxima (not shown). This dampening of the large-scale circulation pattern is consistent with the mean reduction of active convection penetrating into the tropical upper troposphere shown in Figure 1. Consistent with the modified zonal-mean structure of temperature, halving the rate of  $\epsilon_{org}^{RH}$  has little effect on the vertical structure of zonal-mean zonal wind (not shown).

The vertical structures of zonal wind and temperature are intimately linked through thermal-wind balance; the subtropical jets, present in both hemispheres at the poleward boundary of the tropical Hadley Cell, form as a response to large horizontal temperature gradients. Therefore, the cooling in the tropical upper-troposphere in Figure 1 is consistent with the reduction in the strength of the subtropical jets. In the tropics, the vertical structure of the zonal-mean specific humidity (Figure 2) is linked to the vertical structures of temperature and zonal wind through convection. Figure 2 (a) shows the zonal-mean specific humidity from OPER at a 5-day forecast lead time. Values of specific humidity decrease with height



and distance from the equator. The largest difference in zonal-mean specific humidity from the Cy32r3 convective parameterization is a tropical mid-tropospheric moistening, with an equatorial maximum of approximately  $0.6 \text{ g kg}^{-1}$  between 800 and 700 hPa. The cooling in Figure 1 suggested that less active convection was penetrating into the upper-troposphere; the moistening at mid-levels in Figures 2 (b)-(c) suggests that clouds are detraining (and hence moistening their environment) in the mid-troposphere. Environmental moisture is crucial in modulating convective activity on the intraseasonal timescales of the MJO (e.g. Redelsperger *et al.*, 2002; Grabowski, 2003). The aim of the Cy32r3 convective parameterization was to increase the sensitivity of convection in the IFS to environmental moisture (B08), which was suggested by Derbyshire *et al.* (2004) to be too low. While the Cy32r3 convection scheme clearly moistens the mid-troposphere, it is yet unclear whether that is the result or the cause of a more active MJO. The increments from individual physical parameterizations will be compared with the contribution from the dynamics in section 3.3 to assess the role of the model physics in producing the modified basic state observed here.

Additionally, Figure 2 (b) shows that at a 5-day forecast lead time, the Cy32r3 scheme exhibits an equatorial surface (boundary-layer) moistening (drying) of about 0.2 (0.2)  $\text{g kg}^{-1}$ . Figure 2 (c) shows that  $\epsilon_{org}^{RH}$  is almost entirely responsible for the vertical structure of zonal-mean moisture observed with the introduction of the Cy32r3 convective parameterization. With the  $\epsilon_{org}^{RH}$  formulation alone, the mid-tropospheric (surface) moistening is slightly stronger (weaker), while the drying signal in the boundary layer between 950 and 900 hPa is unchanged. The new variable  $\tau$  and the change to rate of  $\epsilon_{org}^{RH}$  have little impact on the vertical structure of zonal-mean specific humidity (Figures 2 (d) and (e)). Figures 1 and 2 show that the introduction of the Cy32r3 convective parameterization, more specifically  $\epsilon_{org}^{RH}$ , has had a significant impact on the mean state of temperature, zonal wind and specific humidity across the tropics in the IFS. At a 5-day forecast lead time, the  $\epsilon_{org}^{RH}$  formulation cools the tropical upper-troposphere (Figure 1), indicative of clouds not penetrating as far into the free troposphere; the detraining of these clouds at mid-levels moistens the mid-troposphere (Figure 2). The dynamical response to less deep, penetrative convection is a reduction in the magnitude of the subtropical jets upward and equatorward of their maxima (not shown).

### 3.2 Distribution of precipitation and cloud

B08 suggested that the Cy32r3 convective parameterization overestimates precipitation in the Maritime Continent and West Pacific. Here, the distributions of equatorial, 1-mm  $\text{day}^{-1}$ -wide binned precipitation from the IFS are compared with those from the Tropical Rainfall Measuring Mission (TRMM) satellite. The distribution of non-zero precipitation values at a 1-day forecast lead time for the control versions of the IFS and the hindcast experiments are compared to TRMM in Figure 3 (a). The contribution of each rain rate bin to the total precipitation is shown in Figure 3 (b). Versions of the IFS with a pre-Cy32r3 convection scheme (Cy31r1 and CONV) agree well with TRMM observations at low precipitation rates, but produce too much (not enough) rain at medium (high) precipitation rates of between 3 and 23  $\text{mm day}^{-1}$  (above 23  $\text{mm day}^{-1}$ ). Additionally, Cy31r1 and CONV exhibit a preferred, but unrealistic, precipitation rate of approximately 10  $\text{mm day}^{-1}$  (Figure 3 (b)). This behaviour has also been seen in the UKMO UM<sup>1</sup> (Hollaway *et al.*, 2012) and NCAR CAM3.0<sup>2</sup> (Thayer-Calder and Randall, 2009).

Comparing OPER and CONV shows that the introduction of the Cy32r3 convection scheme increased the amount of precipitation at low and high rain rates and decreased precipitation at medium rain rates. The modified formulation of convection results in a distribution of precipitation that no longer exhibits

<sup>1</sup>the Unified Model from the Met Office, UK

<sup>2</sup>Community Atmosphere Model version 3.0 from the National Center of Atmospheric Research, USA



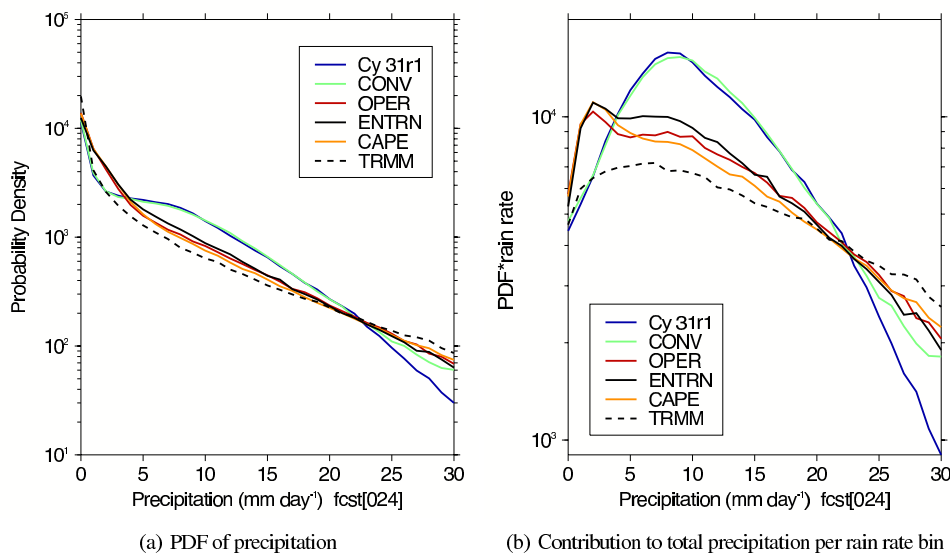


Figure 3: (a) Probability density function (PDF) for non-zero values of precipitation at a 1-day forecast lead time in mm day<sup>-1</sup> from TRMM observations (dashed line), Cy31r1 (blue line), CONV (green line), OPER (red line), ENTRN (black line) and CAPE (orange line). The PDF is calculated from 1-mm day<sup>-1</sup>-wide bins of precipitation in the equatorial belt (all longitudes) between 10°N and 10°S. (b) As (a), but the contribution to the total precipitation by each rain rate.

a preferred precipitation rate of 10 mm day<sup>-1</sup> and, therefore, shows closer agreement with TRMM observations at medium and high rain rates. Since OPER, CAPE and ENTRN all contain the  $\epsilon_{org}^{RH}$  formulation and all exhibit similar distributions of precipitation, the differences attributed to the Cy32r3 convective parameterization can be more directly attributed to  $\epsilon_{org}^{RH}$ . However, in OPER, CAPE and ENTRN there is still not enough heavy rain and too much light rain, with an unrealistic peak at approximately 2 mm day<sup>-1</sup> (Figure 3 (b)), a feature in common with simulations from the NCAR SP-CAM3 (Thayer-Calder and Randall, 2009). All versions of the IFS underestimate the number of dry days compared with TRMM, which, using data from CAM3.0 and SP-CAM, Thayer-Calder and Randall (2009) suggest could contribute to the unrealistic peaks in rainfall at 10 and 2 mm day<sup>-1</sup>, respectively.

To investigate the effect of the modified mean state on clouds, the vertical structure of equatorially averaged cloud cover is examined. There are three prominent modes of convection in the tropics: shallow convection, cumulus congestus and deep precipitating convection (Johnson *et al.*, 1999). Shallow convection detrains at the height of the boundary-layer inversion; deep convection penetrates into the upper troposphere, usually detraining at the tropopause. Cumulus congestus penetrates to a thin stable layer at the zero-degree isotherm, which, in the tropics, is at approximately 500 hPa. The layer is maintained by the heat absorbed by the melting of precipitation from ice to liquid phase. Figure 4 (a) shows the vertical structure of equatorially averaged cloud cover from OPER at a 1-day forecast lead time. The trimodal distribution of tropical cloud described above is apparent, with maxima above the boundary layer, at the melting layer (approximately 500 hPa), and at the tropopause (approximately 100 hPa). The equatorially averaged cloud cover is largest for deep convection over the Indo-Pacific between 60°E and the dateline, the region where convection associated with the MJO occurs. Figures 4 (b)-(e) show the difference in equatorially averaged cloud cover between OPER and CONV, CAPE and CONV, OPER and CAPE and OPER and ENRTN, which highlight the effects of the Cy32r3 convection scheme ( $\epsilon_{org}^{RH}$  and  $\tau$ ),  $\epsilon_{org}^{RH}$  formulation,  $\tau$  and  $\epsilon_{org}^{RH}$  rate, respectively. The introduction of the Cy32r3 convective parameterization (Figure 4 (b)), and more specifically the modified  $\epsilon_{org}^{RH}$  formulation (Figure 4 (c)), increase the

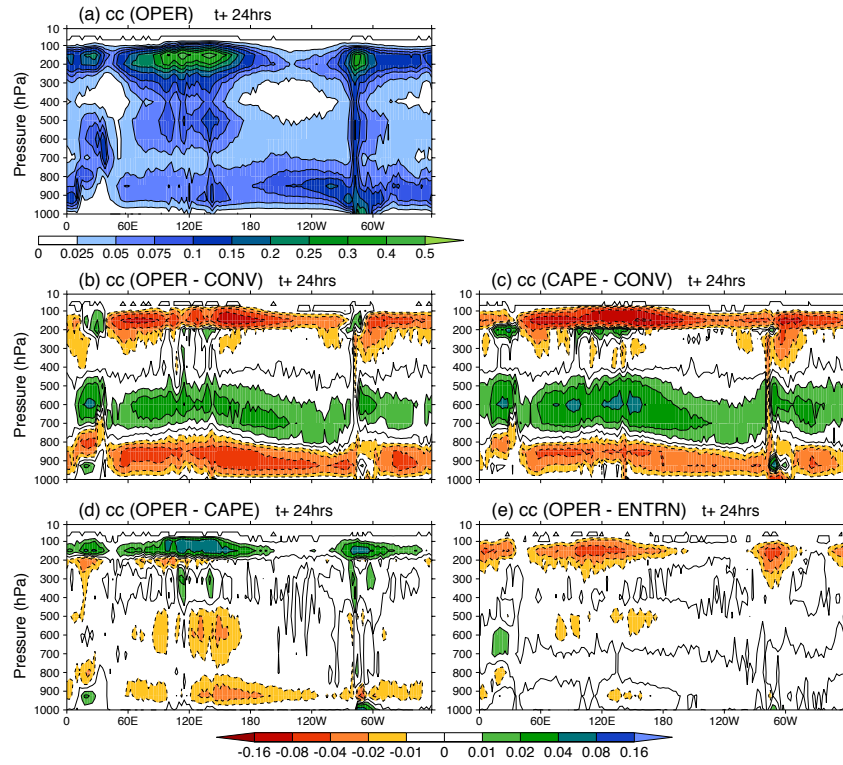


Figure 4: (a) Vertical structure of equatorially averaged ( $10^{\circ}\text{N} - 10^{\circ}\text{S}$ ) cloud fraction from OPER at a 1-day forecast lead time, the scale goes from 0 to 1. (b) Difference in equatorially averaged cloud cover between OPER and CONV (effect of Cy32r3) at a 1-day forecast lead time. (c),(d) and (e), as (b) but difference between CAPE and CONV (effect of  $\epsilon_{org}^{RH}$ ), OPER and CAPE (effect of  $\tau$ ), and OPER and ENTRN (effect of  $\epsilon_{org}^{RH}$  rate) respectively.

amount of cumulus congestus cloud in the mid-troposphere and decrease the amount of shallow and deep convection in the lower- and upper- troposphere at a 1-day forecast lead time. Although the differences are small in magnitude, they are consistent across the equatorial belt. The increase in cumulus congestus with the  $\epsilon_{org}^{RH}$  formulation is a result of an increase in both cloud liquid- and ice-water content between 500 and 800 hPa and 400 and 600 hPa, respectively (not shown).

An increase in cumulus congestus detraining at mid levels is consistent with the moistening of the mid-troposphere (Figure 2) and less deep, penetrative convection reaching as far into the free troposphere, resulting in an upper-tropospheric cooling (Figure 1). At a 5-day forecast lead time, the effect of the  $\epsilon_{org}^{RH}$  formulation in the mid-troposphere is consistent with that of the the start of the forecast: there is a distinct increase in cumulus congestus, and both cloud liquid- and ice-water content, across the equatorial belt (Figure 4). At upper-levels, however, there is no longer a uniform decrease in tropical cloud; over the islands of the Maritime Continent and equatorial South America there are increases in cloud cover.

The role of deep and shallow convection has long been established, but, the importance of cumulus congestus in the transition from shallow to deep convection has been recognised only more recently (e.g. Johnson *et al.*, 1999; Waite and Khouider, 2010). In a dry environment, the entrainment of dry air into a convective plume will dilute the plume, reducing the cloud buoyancy and inhibiting the development of deep convection, resulting in a lower cloud-top level (CTL).

The  $\epsilon_{org}^{RH}$  formulation is designed to entrain more in a dry column, which will enhance the process described above. This explains why more clouds are detraining in the mid-troposphere, and increasing the

cloud cover (and liquid- and ice-water content) there (Figure 4). The mid-tropospheric moistening from the detrainment of congestus clouds results in conditions which are more favourable for deep convection. When a convective plume encounters high humidity in the mid-troposphere, moister air is entrained which limits the decreasing of the cloud buoyancy and results in the development of deeper convection. The importance of the transition from shallow to deep convection in the tropics is discussed further in section 4.

### 3.3 Contribution from the physics tendencies

The  $\epsilon_{org}^{RH}$  formulation modified the vertical structure of temperature, zonal wind and specific humidity in the IFS (section 3.1). Here, through analysis of the heating and moisture tendencies, the contribution from individual components of the IFS to the modified vertical structures shown in section 3.1 can be identified. Figures 5 and 6 show the vertical structure of the zonal-mean increments in temperature and specific humidity from the dynamics, convective parameterization, and - by removing the effect of the shallow convection scheme - the contribution from deep convection only. The zonal-mean is calculated over all longitudes. The domain has been limited to tropical latitudes (30°N - 30°S) where the effect of the modified  $\epsilon_{org}^{RH}$  formulation on the mean state of the IFS was largest (section 3.1).

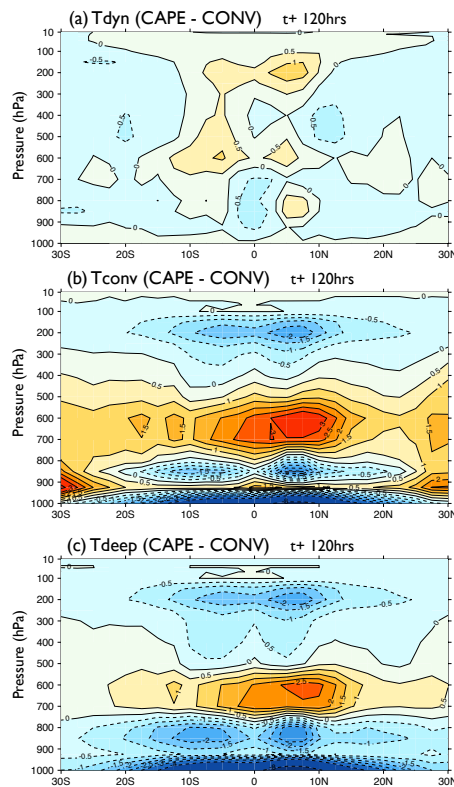


Figure 5: Zonal mean temperature increment (K) from (a) dynamics, (b) convection scheme and (c) the contribution from deep convection accumulated after 5 days of the forecast. The zonal mean is calculated for the period from May 2008 to April 2009 at all longitudes. Negative values are shown by dashed contours.

Figure 1 (c) showed that the main effect of  $\epsilon_{org}^{RH}$  on the zonal-mean temperature was to cool the tropical troposphere, especially at upper levels. Figure 5 (a) shows that the dynamics are not responsible for any of that cooling; in fact, there is a slight warming at upper levels. Over the first 5 days of the forecast, the

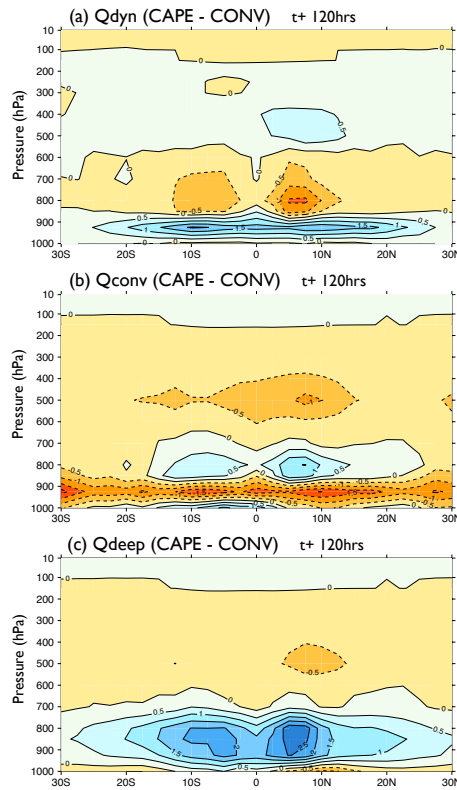


Figure 6: As Figure 5, but for zonal mean specific humidity increments ( $\text{g kg}^{-1}$ ).

convective parameterization has cooled the tropical upper- and lower-troposphere and boundary layer by up to 2, 2.5 and 8 K, respectively (Figure 5 (b)). In addition, there is a distinct warming of the mid-troposphere by up to 3 K after 5 days. Comparing Figures 5 (b) and (c) reveal that the deep convective parameterization is largely responsible for the vertical structure of increments in temperature, exhibiting a strong cooling at the surface, warming in the mid-troposphere and further cooling aloft. Although the vertical structure is the same, this comparison also reveals that the deep convective parameterization is only partly responsible for the mid-tropospheric warming; Figure 5 (b) shows that the shallow convection scheme is responsible for the remaining warming in that layer. Figure 5 suggests some aspects of the modified vertical structure of the zonal-mean temperature with the modified  $\epsilon_{org}^{RH}$  formulation are a direct result of the convective parameterization, or more specifically the deep convection scheme. However, the convective parameterization cannot explain the observed cooling through the entire depth of the tropical troposphere (Figure 1 (c)) because it exhibits a distinct warming in the mid-troposphere.

In contrast the convective parameterization, or indeed the deep convection scheme, had little direct effect on the increments in zonal wind over the first 5 days of the forecast (not shown). This confirms that the observed reduction in the strength of the subtropical jets is the dynamical response to the cooling at upper levels caused by the deep convection scheme (Figure 5 (c)).

Figure 2 (c) showed that the effect of the modified  $\epsilon_{org}^{RH}$  formulation was to moisten the mid-troposphere between 600 and 800 hPa. Figure 6 (a) shows that while the effect of the moisture increments from the dynamics is to moisten the boundary layer and lower troposphere by up to  $2 \text{ g kg}^{-1}$ , in the mid-troposphere their effect is a drying of up to  $1.5 \text{ g kg}^{-1}$  after 5 days of the forecast. The contribution of the convection scheme to the increment in humidity is of the opposite sign to the dynamics: in the lower-troposphere there is a consistent drying across the entire equatorial belt of up to  $2 \text{ g kg}^{-1}$ , with

a maximum around 900 hPa (Figure 6 (b)). Comparison with Figure 6 (c) shows that the shallow convection scheme is responsible for all the convective drying near the surface. Above the dry layer, Figure 6 (b) exhibits convective moistening of over  $1 \text{ g kg}^{-1}$  near the equator. The deep convection scheme moistens the lower troposphere from the surface up to 750 hPa, with a maximum of approximately  $2.5 \text{ g kg}^{-1}$  north of the equator between 800 and 950 hPa. Therefore, it can be concluded that convective moistening contributes to the mid-tropospheric moistening in the tropics which is observed in the zonal-mean specific humidity. Figure 6 (a) confirms that the mid-tropospheric moistening is not a result of the dynamics.

To understand why the  $\varepsilon_{org}^{RH}$  formulation resulted in the modified background state of the IFS described here, it is worth recalling the physical interpretation of the  $\varepsilon_{org}^{RH}$  formulation. The motivation for the change from a moisture-convergent-dependent to a relative-humidity-dependent formulation for organised entrainment was to increase the sensitivity of the formulation to environmental moisture. Physically, this results in larger and smaller entrainment in regions of low and high humidity, respectively. Therefore, with the  $\varepsilon_{org}^{RH}$  formulation, if convection is triggered in a dry environment, more dry air will be entrained into the cloud and the convective plume will not penetrate as far into the free troposphere. This will prevent spurious deep convection being triggered in a dry environment, a problem which has been shown previously to be a source of errors in the simulation of the MJO (Lin *et al.*, 2006). Increasing the sensitivity of cumulus convection to environmental moisture in the modified convective parameterization was designed to address this issue in the IFS (B08). de Rooy *et al.* (2012) showed that it was not only the relative-humidity-dependent formulation for organised entrainment that achieved this but that having a sufficiently strong entrainment constant, and hence large entrainment at cloud base, was crucial too.

The resulting distribution of cloud exhibits a more realistic trimodal structure (Johnson *et al.*, 1999), with more cumulus congestus detraining in the mid troposphere (Figure 4). An effect of the detraining of cumulus congestus at the melting level is to moisten the mid troposphere (Figure 2), preconditioning the atmosphere for deep convection. The ability of a model to moisten its mid-levels has been shown to be crucial to its success at reproducing the observed magnitude of convective heating and drying associated with the MJO (Thayer-Calder and Randall, 2009). Conversely, without mid-tropospheric moistening, the evaporation of precipitation from strong convective events increases, reducing the strength and depth of convection. These results are discussed further in the context of the process-based diagnostics applied in section 4.

## 4 The application of process-based diagnostics

### 4.1 TCW - precipitation statistics

In the tropics, sustained deep convection has long been associated with a humid environment (e.g. Raymond, 2000; Derbyshire *et al.*, 2004). However, the relationship between the total column precipitable water (TCW) and precipitation has only emerged more recently as being important to the simulation of intraseasonal phenomena such as the MJO (Bretherton *et al.*, 2004). To investigate this relationship in each of the equatorial regions in Table 2, the daily accumulated precipitation is binned into 1-kg  $\text{m}^{-2}$ -wide bins of TCW and divided into weak, active and suppressed MJO days according to the MJO metric described in section 2.4. In all versions of the IFS, across all regions, precipitation values increase rapidly with increasing TCW; results for IOW (Figure 7) are shown as a representative sample of the Indo-Pacific region. The observed relationship between precipitation and TCW, plotted as the dash dot line, is defined using TRMM satellite precipitation and ECMWF operational analysis TCW.



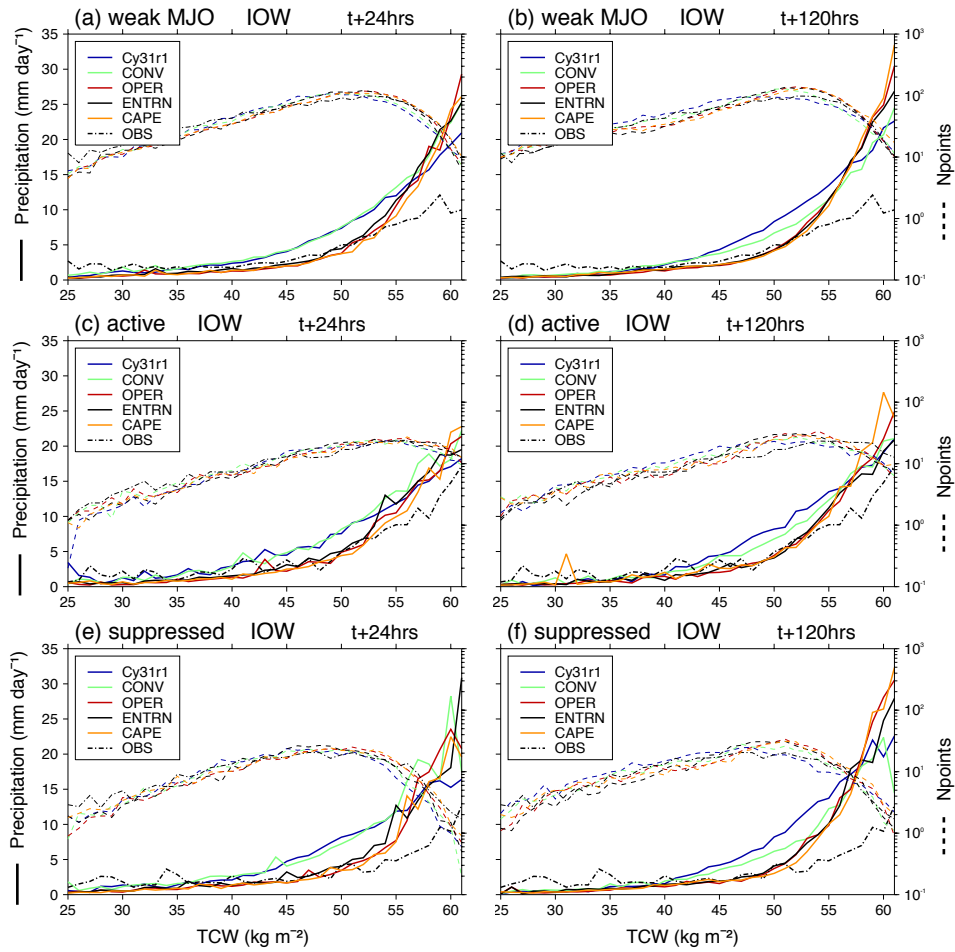


Figure 7: Solid lines represent daily averaged precipitation in  $1\text{-kg m}^{-2}$ - wide bins of total column water (TCW) for grid points in IOW at a 1-day (left) and 5-day (right) forecast lead time for weak MJO (a,b), active (c,d) and suppressed days (e,f). Distribution of data points in each bin is represented by the dashed lines. Observations (dash dot) refers to precipitation from TRMM satellite data and TCW from ECMWF operational analysis.

In Figure 7, for quantities of TCW above  $40\text{ kg m}^{-2}$ , there is a clear distinction between the behaviour of precipitation at different values of TCW in the versions of the IFS with  $\epsilon_{org}^{RH}$  (OPER, ENTRN and CAPE) and those with  $\epsilon_{org}^{MC}$  (Cy31r1 and CONV). This distinction is consistent at longer forecast lead times (Figures 7 (b),(d) and (f)) and for all types of days; active and suppressed days exhibit a noisier distribution, but this is due to fewer days in the TCW bins compared with weak MJO days (dashed lines). For TCW amounts between 40 and  $55\text{ kg m}^{-2}$ , versions of the IFS with  $\epsilon_{org}^{RH}$  agree well with observations, exhibiting a lower precipitation rate at the same quantities of TCW than versions of the IFS with  $\epsilon_{org}^{MC}$ . At higher values of TCW, above  $55\text{ kg m}^{-2}$ , precipitation rates in OPER, ENTRN and CAPE all increase sharply. At these values, versions of the IFS with  $\epsilon_{org}^{RH}$  precipitate more than those with  $\epsilon_{org}^{MC}$ ; all versions of the IFS produce more precipitation than that observed by satellite. The rapid increase in precipitation at higher TCW contents in the IFS is more apparent during suppressed days than active MJO days, especially at longer forecast lead times (Figure 7 (f)). The relationship described above between TCW and precipitation in IOW is also true of IOE, WPE and MCW (not shown).

The relationship does not hold, however, in MCE (Figure 8) where the main differences between the versions of the IFS are at low values of TCW. At a 1-day forecast lead time all versions of the IFS, with



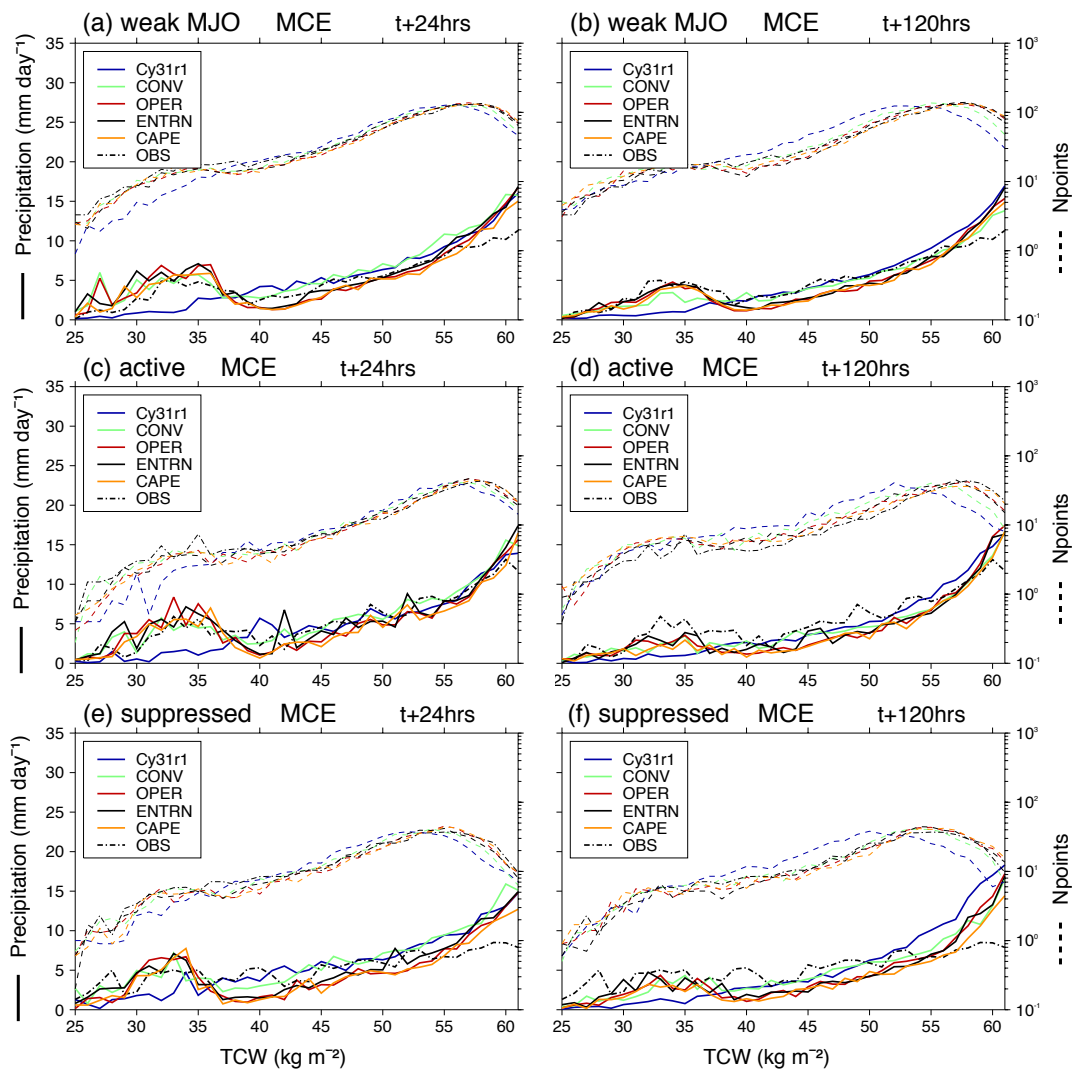


Figure 8: As Figure 7, but for MCE.

the exception of Cy31r1, display a small peak in precipitation rates between 25 and 37  $\text{kg m}^{-2}$ , followed by a rapid decrease between 37 and 40  $\text{kg m}^{-2}$  (Figure 8 (a),(c) and (e)). The same feature is reproduced in the observations (dash dot line). Therefore, at a 1-day forecast lead time in MCE, TCW values between 30 and 35  $\text{kg m}^{-2}$  produce the same amount of precipitation, approximately  $5 \text{ mm day}^{-1}$ , as TCW values between 50 and 55  $\text{kg m}^{-2}$ . At longer forecast lead times, this peak is reduced significantly; at a 5-day forecast lead time TCW values between 30 and 35  $\text{kg m}^{-2}$  produce equivalent precipitation rates with TCW values between 40 and 45  $\text{kg m}^{-2}$  (Figures 8 (b), (d) and (f)). This feature is present, but to a lesser extent, in WPW (not shown). The formulation of  $\epsilon_{org}^{RH}$  is not responsible for this peak; both OPER and CONV display the same behaviour despite having different entrainment formulations:  $\epsilon_{org}^{RH}$  and  $\epsilon_{org}^{MC}$  respectively. Since Cy31r1 is the only version of the IFS run at a lower horizontal resolution,  $T_L255$  ( $\sim 80 \text{ km}$ ) compared with  $T_L799$  ( $\sim 25 \text{ km}$ ), capturing this observed feature could be a consequence of the islands of the Maritime Continent being represented more accurately. This could also be related to orographic enhancement of precipitation or the strength of the land-sea breeze around the islands. Above 40  $\text{kg m}^{-2}$ , similar to Figure 7, versions of the IFS with  $\epsilon_{org}^{RH}$  produce slightly less precipitation

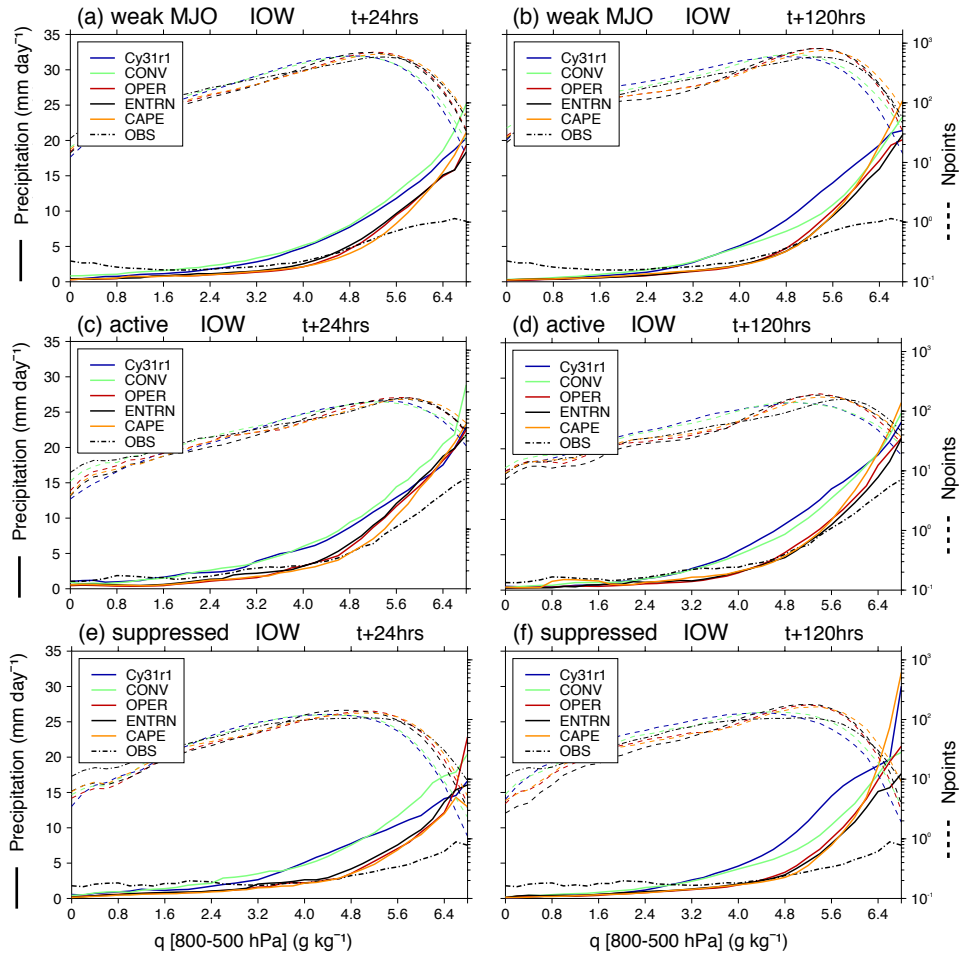


Figure 9: As Figure 7, but for daily averaged precipitation in  $0.2\text{-g kg}^{-1}$ - wide bins of 800 to 500 hPa averaged specific humidity.

for a given amount of water in the atmospheric column than versions with  $\epsilon_{org}^{MC}$ . MCE does not exhibit the rapid increase in precipitation rates at large TCW values with  $\epsilon_{org}^{RH}$  which is observed in all the equatorial regions to the west of it (Figure 7). In MCE, the overestimation, compared with observations, of precipitation at high TCW values is reduced. Furthermore, since OPER and CAPE behave similarly in Figures 7 and 8 it can be concluded that the modified variable adjustment timescale  $\tau$  had little effect on the relationship between TCW and precipitation.

The ‘best’ MJO was produced with  $\epsilon_{org}^{RH}$  (H12), and an effect of  $\epsilon_{org}^{RH}$  was to moisten the tropical mid-troposphere between 800 and 500 hPa (3.1). Therefore, the TCW-precipitation diagnostic has been repeated for mid-level specific humidity - averaged between 800 and 500 hPa - to identify whether the relationship between precipitation and environmental humidity at those levels has changed with the introduction of  $\epsilon_{org}^{RH}$ . For brevity only IOW is shown (Figure 9). As with the TCW-precipitation diagnostic, comparisons are made with observations (dash dot line), using TRMM precipitation and ECMWF operational analysis specific humidity.

In all versions of the IFS, across all equatorial regions, precipitation rates increase with increasing mid-level humidity. As with TCW and precipitation, there is a distinction between versions of the IFS with

$\epsilon_{org}^{RH}$  and versions with  $\epsilon_{org}^{MC}$ , but only above approximately  $2.4 \text{ g kg}^{-1}$ . At low precipitation rates and dry mid-tropospheric humidity values, all versions of the IFS exhibit similar behaviour: in IOW and WPE, the model underestimates the amount of precipitation compared with observations, especially during weak MJO days (e.g. Figures 9 (a) and (b)). This is not a characteristic observed in other equatorial regions (not shown).

Between  $2.4$  and  $4.8 \text{ g kg}^{-1}$ , where precipitation rates increase gradually with increasing humidity, for a given amount of humidity at mid-levels, versions of the IFS with  $\epsilon_{org}^{RH}$  are able to maintain a lower precipitation rate than those with  $\epsilon_{org}^{MC}$ . In the equatorial regions which are predominantly made up of ocean, IOW (Figure 9), IOE and WPE (not shown), this results in a closer agreement with observations between  $2.4$  and  $4.8 \text{ g kg}^{-1}$ . Conversely, in the equatorial regions containing the Indonesian islands, MCW, MCE and WPW (not shown), maintaining a lower precipitation rate for a given mid-tropospheric humidity leads to a less realistic relationship compared with observations. These results suggest that, with  $\epsilon_{org}^{RH}$ , the IFS is able to build up more moisture in the atmospheric column before it is removed by convective precipitation. The increase of entrainment in dry columns could be the mechanism through which convection is suppressed and the build up of humidity is achieved.

Above  $4.8 \text{ g kg}^{-1}$ , precipitation rates in  $\epsilon_{org}^{RH}$  versions of the IFS increase more rapidly than those versions with  $\epsilon_{org}^{MC}$ , resulting in all versions of the IFS behaving similarly when the mid-troposphere is very moist. However, compared with observations, all versions of the IFS overestimate the amount of precipitation, a characteristic true of all equatorial regions for all types of days. Comparing OPER and CAPE in Figure 9 shows that, as with the TCW-precipitation statistics, the variable adjustment timescale  $\tau$  does not substantially affect the relationship between moisture in the mid-troposphere and precipitation rates.

Figures 7 and 8 (Figure 9) show that the introduction of  $\epsilon_{org}^{RH}$  in the IFS has changed the behaviour between precipitation and TCW (mid-level humidity) for moderate values between  $40$  and  $55 \text{ kg m}^{-2}$  ( $2.4$  and  $4.8 \text{ g kg}^{-1}$ ). At these values, with  $\epsilon_{org}^{RH}$ , the IFS is able to maintain lower precipitation rates for a given amount of TCW or mid-tropospheric moisture, which, for the equatorial oceanic regions of IOW, IOE and WPE, result in a closer agreement with observations. This change in relationship means that moderately moist columns remain moist for longer due to the suppression of convection, allowing instability to build. All versions of the IFS, across all equatorial regions, overestimate precipitation rates in the humid tail of the distribution. Moving to a variable adjustment timescale  $\tau$  in the closure for deep convection, however, had little effect on the TCW- and humidity-precipitation relationships.

Therefore, it seems that a requirement of a model that reproduces a strong MJO signal, as OPER, CAPE and ENTRN with  $\epsilon_{org}^{RH}$  do (H12), is to (a) refrain from producing precipitation in dry columns, and (b) exhibit an exponential increase in precipitation with TCW when the environment is very humid, although this results in an overestimation of precipitation compared with observations. These findings are consistent with work that compared simulations from the Community Atmosphere Model (CAM) with its "superparameterized" counterpart (SP-CAM; Zhu *et al.*, 2009).

## 4.2 Parameters binned based on precipitation

Figure 3 revealed that IFS versions with  $\epsilon_{org}^{MC}$  exhibited an unrealistic preferred rainfall rate of approximately  $10 \text{ mm day}^{-1}$ , while versions with  $\epsilon_{org}^{RH}$  had a distribution that, although overestimating precipitation at low rainfall rates, agreed more closely with TRMM. The aim of the analysis carried out here is to further investigate the relationship between rainfall rate and TCW. Figure 10 (a) shows the observed 2-dimensional histogram of TCW versus precipitation from ERA-Interim and TRMM satellite data respectively calculated for days between May 2008 and April 2009, and averaged over the IOW region;

Figure 10 (b) shows the equivalent from OPER at a 1-day forecast lead time. Only IOW at a 1-day forecast lead time is shown; consistent behaviour was found for the remaining five equatorial regions and for longer forecast lead times.

In both model and observations, the maximum in the percentage of days occurs at low values of precipitation (up to 1 mm day<sup>-1</sup>) and relatively high values of TCW (44 - 56 kg m<sup>-2</sup>) (Figures 10 (a) and (b)). Figures 10 (c)-(f) compare (c) OPER and CONV, (d) CAPE and CONV, (e) OPER and CAPE and (f) OPER and ENTRN, revealing the effect of the Cy32r3 convective parameterization,  $\epsilon_{org}^{RH}$  formulation,  $\tau$  and  $\epsilon_{org}^{RH}$  rate, respectively. Consistent with the analysis in section 4.1, Figure 10 (d) shows that in a moist column with  $\epsilon_{org}^{RH}$  the IFS produces less rain than with  $\epsilon_{org}^{MC}$ . For example, for a value of TCW of approximately 50 kg m<sup>-2</sup> with  $\epsilon_{org}^{RH}$  the IFS produces more days with precipitation of up to 3 mm day<sup>-1</sup> and fewer days with precipitation at values above 4 mm day<sup>-1</sup>. Reducing the rate of  $\epsilon_{org}^{RH}$  has the equivalent change in behaviour but it is somewhat weakened (Figure 10 (f)). The effect of the variable  $\tau$  is weak and has the opposite sign; in a moist column with the variable  $\tau$  the IFS produces more days with more rain and fewer days with less rain.

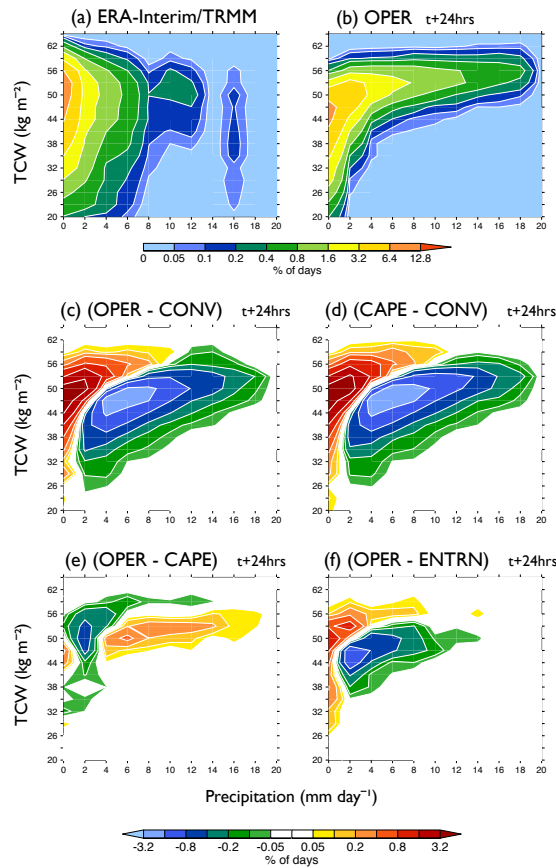


Figure 10: 2-dimensional histogram of Total Column Water (TCW; kg m<sup>-2</sup>) versus precipitation (mm day<sup>-1</sup>) averaged over IOW from (a) ERA-Interim reanalysis and TRMM satellite data and (b) OPER at a 1-day forecast lead time, (c) difference between OPER and CONV (effect of Cy32r3), (d) CAPE and CONV (effect of  $\epsilon_{org}^{RH}$  formulation), (e) OPER and CAPE (effect of  $\tau$ ), (f) OPER and ENTRN (effect of  $\epsilon_{org}^{RH}$  rate). The histograms are calculated for all days between May 2008 and April 2009.

The analysis here of TCW versus precipitation rates builds up a consistent picture of the effect of changing the formulation of organised entrainment from  $\epsilon_{org}^{MC}$  to  $\epsilon_{org}^{RH}$ . It is worth recalling the discussion in

Bladé and Hartmann (1993) on their “recharge-discharge” theory of the MJO. They suggest that the period of an MJO is set by the time it takes for the atmosphere to build up instability, or “recharge”, after stabilisation through convection, or “discharge”, has occurred. Results here suggest that the modified IFS, with  $\epsilon_{org}^{RH}$ , is able to more effectively “recharge” the atmosphere. More CAPE (not shown) and moisture (Figures 10) are able to build up in the tropical atmosphere without being released through convective precipitation; this results in suppressed convective conditions becoming more suppressed. The mechanisms described here lead to a better representation of the suppressed phase of the MJO and, since more instability is built up, lead to more vigorous deep convection when that instability is released, hence also a better representation of the active phase of the MJO.

### 4.3 Vertical structure of moisture

The April 2009 case study discussed in H12, is used to test the hypothesis that the modified IFS, with  $\epsilon_{org}^{RH}$ , is better able to simulate the destabilisation of the tropical atmosphere before a deep convective event. Figure 11, shows how the vertical structure of moisture changes during a 50 day period in March and April 2009 in IOW. This region is shown for consistency with section 4.1. The 20-100 day band-pass filtered OLR from the AVHRR satellite is also plotted (thick black line); the minimum in filtered OLR indicates the maximum strength of the convective event in that region.

Figure 11 (a) shows, over IOW, the ‘observed’ change from the initial state in the vertical structure of moisture with data from ERA-Interim reanalysis. In mid-March, approximately 25 days prior to the strong minimum in filtered OLR which occurred on 12<sup>th</sup> April, ERA-Interim displays a drying of more than  $1.2 \text{ g kg}^{-1}$  at mid-levels, with a maximum at 600 hPa. This drying coincides with the maximum in filtered OLR, or the suppressed phase of the MJO. Approximately 10 days prior to the convective maximum, there is a distinct moistening of more than  $1.6 \text{ g kg}^{-1}$  in the lower-troposphere, which, with the passage of the wave, extends into the mid- and upper-troposphere reaching 300 hPa during mid-April. In late April, there was a further mid-troposphere drying with a maximum at 600 hPa, associated with the return to suppressed conditions over IOW. Figure 11 (b) shows that compared with ERA-Interim, OPER successfully captures the mid-tropospheric drying before and after the convective maximum, but underestimates the lower-tropospheric moistening prior to the minimum in filtered OLR at a 1-day forecast lead time. The moist layer in OPER between 900 and 600 hPa has strengthened considerably at a 5-day forecast lead time (Figure 11 (c)).

At a 1-day forecast lead time, the effect of the modified Cy32r3 convective parameterization (Figure 11 (d)) is, irrespective of the phase of the wave, to (a) moisten the surface, and a layer in the mid troposphere between 700 and 600 hPa by more than  $0.4 \text{ g kg}^{-1}$ , and (b) dry a layer in the lower troposphere between 900 and 800 hPa by more than  $0.4 \text{ g kg}^{-1}$ . This effect can be directly attributed to  $\epsilon_{org}^{RH}$  (Figure 11 (f)). At longer forecast lead times, however, the effect of  $\epsilon_{org}^{RH}$  is to moisten the tropical troposphere up to 400 hPa, with a maximum of more than  $0.8 \text{ g kg}^{-1}$  at approximately 800 hPa. Therefore, with  $\epsilon_{org}^{RH}$ , the IFS is able to build up considerably more moisture prior to the convective maximum associated with the MJO; Thayer-Calder and Randall (2009) showed this was a feature which is also apparent in SP-CAM. However, as forecast lead time increases, an effect of  $\epsilon_{org}^{RH}$  is to moisten throughout the entire passage of the wave, resulting in an overestimation of mid-tropospheric moisture compared with ERA-Interim, especially in late April after the convective maximum has occurred. Halving the rate of  $\epsilon_{org}^{RH}$  and changing to a variable  $\tau$  had little effect on the change in moisture during the MJO event after 1 day of the forecast (Figures 11 (h) and (j)). At a 5-day forecast lead time,  $\tau$  exhibits a drying in the middle and lower troposphere throughout the passage of the MJO, which compensates for the moistening effect of  $\epsilon_{org}^{RH}$  and reduces the overestimation of humidity in Cy32r3. Results from the other equatorial regions



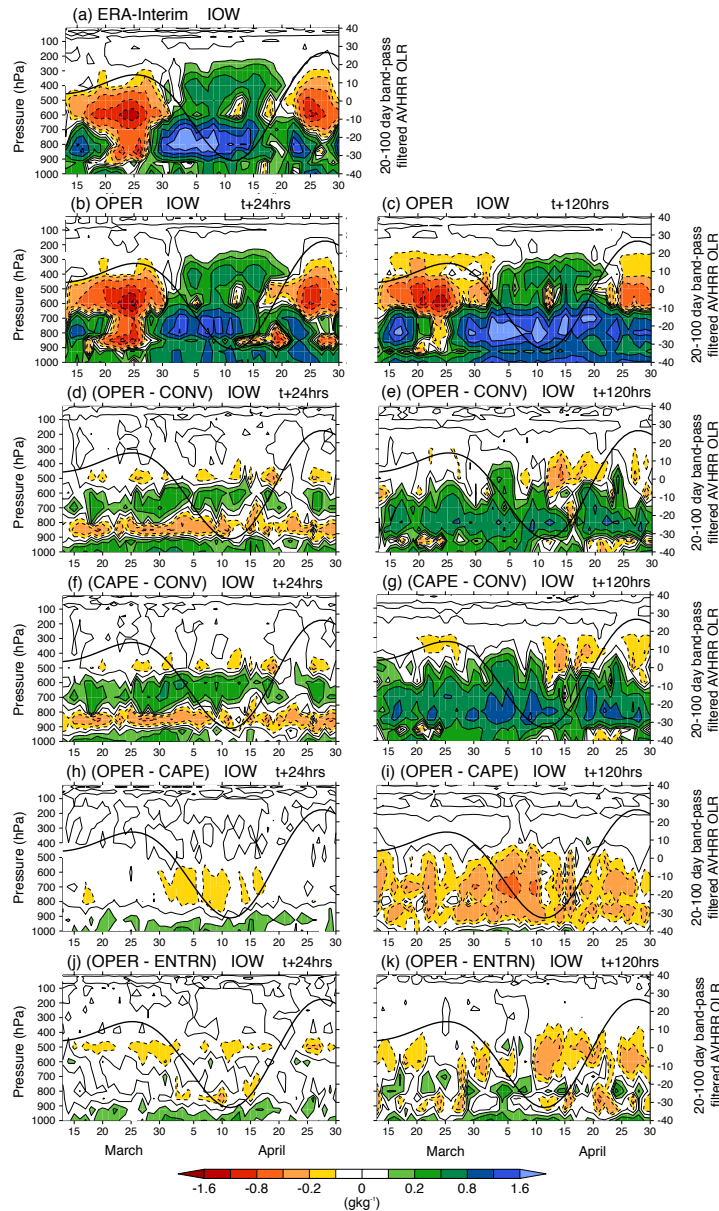


Figure 11: Change from the initial state in the vertical structure of specific humidity averaged over IOW for a 50-day period in March and April 2009. (a) ERA-Interim, (b) and (c) OPER at a 1- and 5-day forecast lead time. Difference at a 1- and 5-day forecast lead time between OPER and CONV (effect of Cy32r3; (d),(e)), CAPE and CONV (effect of  $\epsilon_{org}^{RH}$  formulation; (f),(g)), OPER and CAPE (effect of  $\tau$ ; (h),(i)) and OPER and ENTRN (effect of  $\epsilon_{org}^{RH}$  rate; (j),(k)). Area-averaged 20-100 day band-pass filtered OLR from the AVHRR satellite (thick black line).

are consistent with the picture of convective moistening during the passage of the April 2009 MJO event shown in Figure 11.

Figure 11 shows, by comparison to ERA-Interim, that OPER is able to capture the features of convective moistening during the passage of the MJO. Across each equatorial region in the Indo-Pacific, OPER, like ERA-Interim, exhibits mid-tropospheric drying during periods of maximum filtered OLR and mid-tropospheric moistening during periods of minimum filtered OLR. With  $\epsilon_{org}^{RH}$ , the IFS is able to better simulate the transition between the two phases. Approximately 10 days prior to the convective maximum,



across all regions, the IFS with  $\varepsilon_{org}^{RH}$ , starts to moisten the surface and lower-troposphere. Increasing the entrainment in HadGEM3 integrations ( $1.5 * \varepsilon$ ) had a similar effect to introducing  $\varepsilon_{org}^{RH}$  in the IFS (Klingaman, 2011). This preconditions the atmosphere for the deep convection associated with the MJO; in a moister environment, convective plumes can penetrate further into the free troposphere without the dilution, by entrainment, of too much dry air. At longer lead times, the IFS with  $\varepsilon_{org}^{RH}$  is often too moist, a problem that the modified IFS shares with SP-CAM (Thayer-Calder and Randall, 2009). If more data were available, it would be worth compositing over a number of MJO events to assess the consistency of these findings.

#### 4.4 Temperature and moisture tendencies

Continuing with the case study analysis, temperature ( $T_{phys}$ ; equation 1), and humidity, ( $q_{phys}$ ; equation 2) increments for IOW (Figure 12) from the IFS model physics are analysed. Since  $\varepsilon_{org}^{RH}$  is responsible for the advances in MJO simulation (H12), the analysis here focuses on the effect of  $\varepsilon_{org}^{RH}$  (CAPE-CONV), by examining the role of convective moistening by the sub-grid scale processes in the IFS during the same 50 day period as in section 4.3. The tendencies are calculated by summing contributions from shallow and deep convection ( $_{shal}$  ;  $_{deep}$ ), the cloud and turbulent diffusion schemes ( $_{cld}$  ;  $_{turb}$ ), and, for heating only, the radiation scheme ( $_{rad}$ ). Although all the sub-grid scale processes are included in the analysis presented here, the largest contribution comes from the convection scheme.

$$T_{phys} = T_{shal} + T_{deep} + T_{cld} + T_{turb} + T_{rad} \quad (1)$$

$$q_{phys} = q_{shal} + q_{deep} + q_{cld} + q_{turb} \quad (2)$$

A deep convective plume will moisten its immediate environment through the detrainment of moist air into the free troposphere. However, observational studies have shown that vigorous, precipitating convection is associated with a heat source and moisture sink in the mid-troposphere (e.g. Lin and Johnson, 1996). The moisture sink is due to the removal of moisture from the atmosphere in the form of precipitation, and further drying of the atmosphere through compensating subsidence- the balance of the ascending, moist air with descending, dry air between convective plumes. These features are reproduced in the CAPE experiment; Figure 12 shows that in mid-April, in IOW, during the period of maximum convection (minimum filtered OLR), there is a clear mid-tropospheric heating of more than  $4 \text{ K day}^{-1}$ , and drying of more than  $1.6 \text{ g kg}^{-1} \text{ day}^{-1}$ . The heating and drying associated with the passage of the MJO are stronger at longer forecast lead times (Figures 12 (b) and (f)).

Shallow convection does not penetrate as far into the free troposphere. It detrains more moist air out of the ascending plume, has weaker compensating descent and produces less precipitation than deep convection; therefore, the overall effect of shallow convection is to moisten the lower troposphere. Based on this, Figures 12 (e) and (f) show the moistening of the lower troposphere, and hence the occurrence of shallow convection, in mid-March, during the days of maximum filtered OLR prior to the convective maximum. However, the strongest lower-tropospheric moistening, by more than  $1.6 \text{ g kg}^{-1} \text{ day}^{-1}$ , occurs during and in the days immediately after the convective maximum associated with the MJO, a feature which is slightly weakened at longer lead times (Figure 12 (f)).

By comparing the difference between CAPE and CONV across all the equatorial regions, a consistent picture emerges of the effect of  $\varepsilon_{org}^{RH}$  on convective moistening by sub-grid scale processes. At a 1-day forecast lead time,  $\varepsilon_{org}^{RH}$  dries (moistens) the lower troposphere (mid-troposphere) between 1000 and 850 (850 and 500) hPa; there is a further, weaker dry layer at 400 hPa (Figures 12 (g)). Additionally, at the 1-day forecast lead time,  $\varepsilon_{org}^{RH}$  cools the tropical troposphere through the entire period, apart from a small

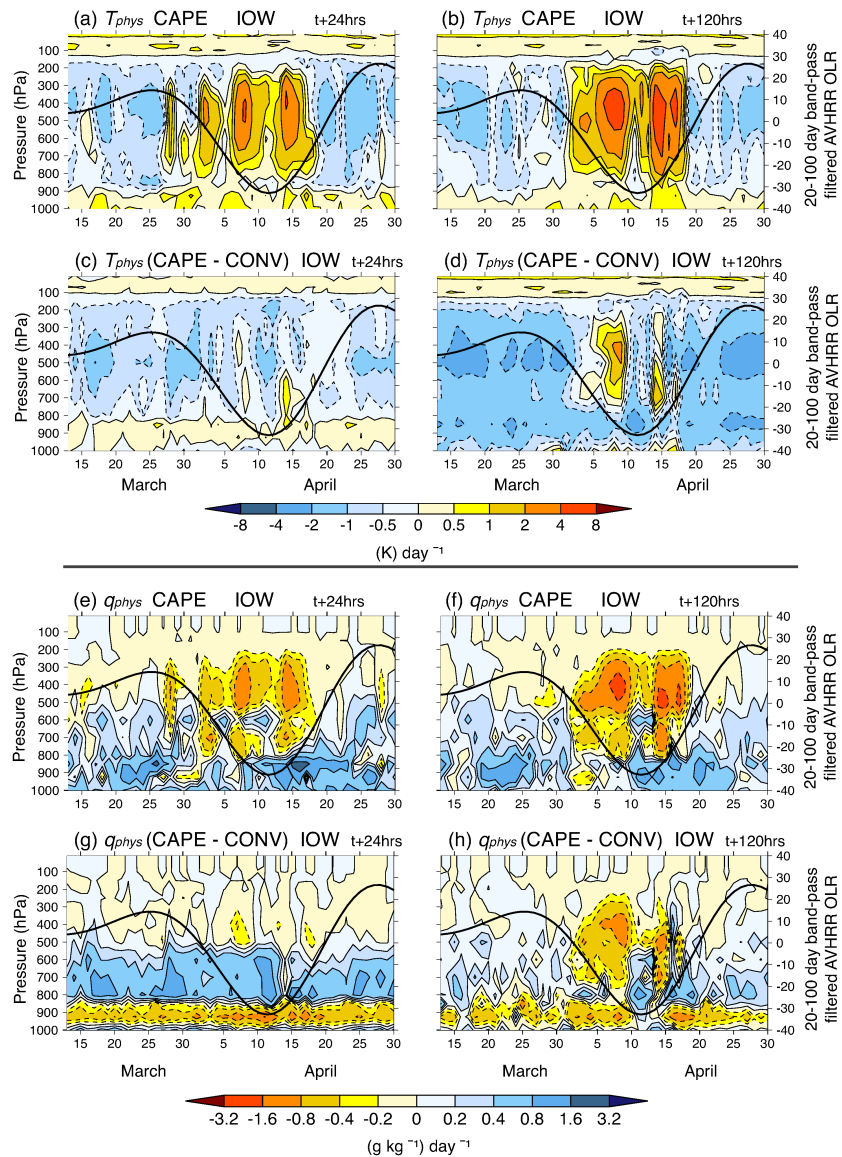


Figure 12: Heating ( $T_{phys}$ , equation 1; top) and moistening ( $q_{phys}$ , equation 2; bottom) tendencies from the IFS model physics, accumulated over a day and averaged over IOW. (a),(b),(e) and (f) show CAPE at a 1- and 5-day forecast lead time. (c),(d),(g) and (h) show the difference between CAPE and CONV (effect of  $\epsilon_{org}^{RH}$  formulation) at a 1- and 5-day forecast lead time. Area-averaged 20-100 day band-pass filtered OLR from the AVHRR satellite ( $W m^{-2}$ ; thick black line). Negative values are shown by dashed contours.

warming of the mid-troposphere at or near the time of minimum filtered OLR (Figures 12 (c)). At a 5-day forecast lead time, the near-surface drying between 1000 and 850 hPa is still apparent throughout the 50 day period; when the filtered OLR is at a minimum, the entire troposphere dries, with a maximum at approximately 400 hPa. The moist layer, seen after the first day of the forecast, weakened and became confined to days when the filtered OLR was at a maximum (Figures 12 (h)). The signal in the heating, observed after a 1-day forecast lead time is consistent, but strengthened, at a 5-day lead time: when filtered OLR is at a maximum (minimum), there is cooling (heating) throughout the troposphere (in the mid-troposphere), strongest between 400 and 500 hPa (Figures 12 (d)).

The dry and moist layers in the lower- and mid-troposphere at a 1-day forecast lead time show that the IFS, with  $\epsilon_{org}^{RH}$ , is producing less shallow, weak-precipitating convection and more convection detraining at mid-levels during the entire 50 day period, a finding consistent with Figure 4 in §3.2. The fact that the IFS, with  $\epsilon_{org}^{RH}$ , is capable of moistening the mid-levels will result in (a) a weaker trade inversion at the melting level during weak convective events, and (b) a reduction in evaporation at those levels during strong convective events. Therefore, the heating and drying associated with the deep, penetrative convection of the MJO is strengthened. As the IFS moves through the forecast, with  $\epsilon_{org}^{RH}$ , the periods of strong convective activity are strengthened (more heating and drying), and the periods of weak convective activity become more suppressed (more cooling and moistening). This could explain how the IFS is able to maintain the amplitude of the MJO at longer forecast lead times with  $\epsilon_{org}^{RH}$ .

## 5 Discussion of results

### 5.1 Impact on the mean state

Results from H12 showed that the introduction of the Cy32r3 convective parameterization significantly improved the simulation of the MJO. It was shown that the relative-humidity-dependent formulation for organised entrainment ( $\epsilon_{org}^{RH}$ ) was responsible for the advances in simulating intraseasonal variability. In light of this, the focus here has been to identify how the  $\epsilon_{org}^{RH}$  formulation has modified the mean state of the IFS, and to understand how that modified mean state may lead to, or indeed result from, a better representation of the MJO. The main changes to the mean state of the IFS with the introduction of the relative-humidity-dependent formulation for organised entrainment are:

- (a) a cooling through the depth of the tropical troposphere, largest in the upper troposphere (Figure 1), likely to be as a result of less active convection that does not penetrate as deep into the upper troposphere.
- (b) an associated increase in the occurrence of cumulus congestus clouds detraining in the mid-troposphere (Figure 4).
- (c) a moistening of the tropical mid-troposphere (Figure 2), likely to be due to (b).
- (d) a reduction in the magnitude of the subtropical jets above and equatorward of their maxima (not shown), a dynamical response to (a)-(c) (section 2.2).
- (e) a more realistic distribution of precipitation rates, compared with TRMM observations (Figure 3).

Analysis of the physical tendencies from the IFS revealed that the convective parameterization, more specifically the deep convection scheme, contributed to the change in the vertical structure of the zonal-mean temperature in the tropics (Figure 5). The modified mean state in zonal wind discussed in section 3.1 can not be directly attributed to the convection scheme, but is likely a consequence of the modified vertical structure in temperature. The increments in moisture from the dynamics and from convective parameterization are opposite in sign (Figure 6): the dynamics (convection scheme) increments moisten (dry) at the surface across the entire tropics and dry (moisten) the mid-troposphere, with maxima near the equator.

## 5.2 Physical processes at work

The modified mean state of the IFS reported here, with the introduction of  $\varepsilon_{org}^{RH}$ , results in an IFS that is better able to represent the transition from shallow to deep convection through more effective preconditioning of the mid levels. These processes could contribute to the improved representation of the MJO in the IFS with the modified  $\varepsilon_{org}^{RH}$  formulation. The application of process-based diagnostics in section 4 explored this hypothesis and examined the role of convective moistening in the simulation of the MJO.

The introduction of  $\varepsilon_{org}^{RH}$  changed the relationship between precipitation and moisture in the IFS (§4.1), a relationship shown to be highly nonlinear in observations (Bretherton *et al.*, 2004), but very important to the simulation of the MJO (Kim *et al.*, 2009; Zhu *et al.*, 2009; Thayer-Calder and Randall, 2009). In general, the modified relationship between tropical rainfall and column humidity is more realistic compared with observations. With  $\varepsilon_{org}^{RH}$ , the IFS is able to accumulate more moisture in the atmospheric column before it starts producing precipitation. This results in (a) fewer occurrences of low-humidity environments producing moderate precipitation rates, i.e. too frequent weak convection; and (b) heavy precipitation occurring only when the atmospheric column is sufficiently moist. The former is likely to be the physical mechanism through which the modified IFS, with  $\varepsilon_{org}^{RH}$ , no longer exhibits an unrealistic preferred rainfall peak of approximately 10 mm day<sup>-1</sup> (Figure 3); and the latter is likely to be a physical mechanism through which the IFS is better able to simulate the transition from shallow to deep convection through the build up of mid-tropospheric moisture.

The modified precipitation-moisture relationship in the post-Cy32r3 IFS is by no means perfect. In versions of the IFS with  $\varepsilon_{org}^{RH}$ , at the humid end of the distribution precipitation increases exponentially with column water vapour. This is a feature that the IFS shares with SP-CAM, and which is suggested to be crucial to the successful simulation of the MJO (Zhu *et al.*, 2009). However, in both the IFS and SP-CAM, this results in an overestimation of precipitation in a humid environment compared with observations.

The results from this study suggest that tropospheric moisture control on precipitation is a necessary process to for a model to capture if it is to be successful at simulating intraseasonal variability (Figures 7 - 9). This adds weight to the existing evidence in the literature that the relationship between precipitation and humidity is important to the representation of the MJO in numerical simulations. Kim *et al.* (2009) applied “process-based” diagnostics to output from eight climate models and showed that the dependence of precipitation on the vertical structure of tropospheric humidity was a feature common among models that produced the most accurate simulations of the MJO. Similar findings have emerged from comparisons between CAM and SP-CAM (Zhu *et al.*, 2009; Thayer-Calder and Randall, 2009). CAM, like versions of the IFS with  $\varepsilon_{org}^{MC}$ , allows strong convection to occur in a dry column. Thayer-Calder and Randall (2009) suggest the dependence on CAPE in the closure for deep convection in CAM is partly responsible for a missing link between convective mass transport and environmental moisture. This study has shown that the IFS is able to increase the sensitivity of convection to column moisture through changing the formulation of organised entrainment, without replacing its CAPE trigger for deep convection.

By relating the convective mass-flux of deep, entraining plumes to the environmental moisture field, the introduction of  $\varepsilon_{org}^{RH}$  changed the control on convection in the IFS; the sensitivity of deep convection to the amount of water vapour in the atmospheric column was increased. This led to an increase in dry-air entrainment in low-humidity environments. The dilution of a convective plume by dry air will reduce net condensation and buoyancy, inhibit the development of deep cumulonimbus and result in lower cloud-top heights. Therefore, with  $\varepsilon_{org}^{RH}$ , convective plumes ascending in a dry environment will not penetrate as high into the upper-troposphere; fewer deep convective plumes penetrating into the upper-troposphere results in a cooling there (Figure 1). The overestimation of the depth and intensity of convection in dry

conditions has been reported as a possible cause for poor simulations of the MJO (e.g. [Lin \*et al.\*, 2006](#)), and proved a tough test for a model's moist physics to represent. However, dry-air entrainment has previously been shown to be an effective mechanism through which tropospheric moisture modulates cloud depth in observational studies ([Holloway and Neelin, 2009](#)) and cloud-resolving numerical simulations ([Waite and Khouider, 2010](#)).

An effect of the lower cloud-top heights, produced through increased dry-air entrainment, is that more convective plumes will terminate near the melting layer. The melting layer is a thin stable layer at the zero-degree isotherm (approximately 500 hPa in the tropics) that is maintained by heat absorbed by the melting of precipitation from ice to liquid phase ([Johnson \*et al.\*, 1999](#)). The occurrence of more clouds which terminate near this stable layer and the melting of the associated frozen precipitation results in a loss of heat and an increase in stability at this level. This is suggested as the process through which  $\epsilon_{org}^{RH}$  increases cumulus congestus in the IFS (Figures 4). A strong stable layer in the middle troposphere will result in more convective plumes detraining there. A similar effect, albeit by a different mechanism, has been seen in GCM simulations; [Inness \*et al.\* \(2001\)](#) showed that improving the representation of the freezing level, through a finer vertical resolution, led to a more realistic trimodal distribution of cloud compared with observation.

The increase in cumulus congestus detraining at the melting layer acts to moisten the mid troposphere (Figure 2), slowly eroding the stable layer. As the cumulus congestus deepens, the moistening penetrates further into the free troposphere. Due to the modified tropospheric moisture control on precipitation described above, deep cumulonimbus is only triggered when the environment is sufficiently humid (Figures 7 - 9). Therefore, during this transition phase more moisture (Figure 10) and CAPE can build up, with the convection scheme removing less moisture from dry or moderately moist columns. [Waite and Khouider \(2010\)](#) suggest that, for the transition from shallow to deep convection, the build up of free-tropospheric moisture is more important than the build up of CAPE. In their cloud-resolving simulations, if there is sufficient moisture in the mid troposphere then deep convection can be triggered with relatively low CAPE.

A corollary of the tropospheric moisture control on convection is that once deep cumulonimbus does develop, it does so in a moist environment. When convection occurs in a moist environment, the entrainment of air into the convective plume does not result in significant dilution or loss of buoyancy, but rather strengthens the convective heating. The compensating subsidence between ascending convective plumes results in the formation of a large-scale circulation, which is maintained by a mechanism referred to by [Grabowski and Moncrieff \(2004\)](#) as the moisture-convection feedback. This moisture-convection effect has also been shown to be important to the simulation the MJO in an aquaplanet configuration (e.g. [Raymond and Fuchs, 2009](#)). The large-scale circulation deepens the moist layer in the free troposphere and increases the compensating subsidence, which in turn strengthens the large-scale circulation. The findings of this paper are consistent with the moisture-convection feedback being a physical mechanism which contributes to better maintaining the intraseasonal variability associated with the MJO in the modified IFS.

Recognising the role that thermodynamic feedback processes play in the initiation and evolution of the MJO, [Bladé and Hartmann \(1993\)](#) proposed a “discharge-recharge” theory for the MJO. According to their theory, the period of the MJO is set by the time it takes the atmosphere over the tropical Indian Ocean to destabilise or “recharge”. The build up of moisture through low- and mid-level cloud increases instability until finally deep convection is triggered and the atmosphere stabilises again. This stabilisation, or “discharge”, removes the moisture from the tropical atmosphere and returns it to a dry, suppressed regime. Consistent with this theory, the build up of moisture in the lower and middle troposphere prior to the convective maximum associated with the MJO (Figures 9), suggests that the modified IFS is better



able to “recharge” the tropical atmosphere. Through increasing the stability of the atmosphere, dry-air entrainment is a crucial mechanism through which the modified IFS inhibits the premature development of deep convection, resulting in an improved representation of the suppressed phase of the MJO. Therefore, with  $\varepsilon_{org}^{RH}$ , there is a clearer distinction between active and suppressed conditions associated with the MJO (Figures 12), as well as a smoother transition between the regimes.

Making the organised entrainment rate in the IFS parameterization for deep convection more sensitive to the environmental humidity surrounding the convective plume has confirmed the hypothesis that the modified IFS is better able to simulate the transition from shallow to deep convection. With  $\varepsilon_{org}^{RH}$ , the IFS starts to produce precipitation with more water in the atmospheric column (Figs 7 and 8) and a mid-troposphere that is more moist (Figures 9). This allows the build up of more CAPE and moisture (Figures 10) without much release or removal from the atmospheric column through convective precipitation. The modified relationship between precipitation and moisture allows for better preconditioning of the lower- and mid-troposphere prior to a large convective event. During the passage of an MJO event in April 2009, with  $\varepsilon_{org}^{RH}$  the IFS was able to moisten the lower troposphere in the days prior to the convective maximum associated with the MJO (Figures 11). The moistening of mid-levels (Figures 12) decreases the stability of the mid-troposphere at the melting level, which enables the following convective plumes to overcome the stable layer and penetrate into the upper-troposphere. As well as simulating the transition from shallow to deep convection through convective preconditioning by cumulus congestus at mid-levels, with  $\varepsilon_{org}^{RH}$  the distinction between suppressed and active conditions is larger. Suppressed conditions become more suppressed and active conditions more active (12). However, in the case of the active phase of the MJO, this has resulted in an overestimation of precipitation compared with observations.

## 6 Conclusions

### 6.1 Effect of individual components of Cy32r3

Having established that the Cy32r3 convective parameterization was responsible for the improvements in MJO simulation, the hindcast experiments were analysed to determine which part of the modified scheme, the variable  $\tau$  or the entrainment formulation ( $\varepsilon_{org}^{RH}$ ), was responsible. Results have conclusively shown that changing the control on convection, by modifying the formulation of entrainment from  $\varepsilon_{org}^{MC}$  to  $\varepsilon_{org}^{RH}$ , was the key to the advances in MJO simulation described above.

Contrastingly, analysis of the ENTRN hindcast experiment showed that, within the  $\varepsilon_{org}^{RH}$  formulation, the simulation of the MJO was not sensitive to this (approximate) 25% reduction in the rate of entrainment. A relative-humidity-dependent formulation for organised entrainment led to an IFS that produced a more realistic distribution of precipitation (Figure 3) and a trimodal structure of tropical cloud, with more cumulus congestus moistening the mid-troposphere (Figure 4). This resulted in an IFS that was able to increase convective activity in the Maritime Continent and West Pacific without producing deep, penetrative convection too often (section 3.1 and 3.2). These results suggest that, with  $\varepsilon_{org}^{RH}$ , the IFS has improved its simulation of the MJO through a better representation of the transition from shallow to deep convection. The physical mechanisms through which this was achieved were the focus of section 4 and will be addressed in more detail below. Moving to a variable CAPE adjustment timescale had a small compensating effect on the mean state of the IFS but little overall impact on the simulation of the MJO (H12). However, the value of the primary peak in the PDF of the variable  $\tau$  was close to the previous, resolution-dependent constant. This may account for the lack of impact on the simulation of the MJO.



## 6.2 Physical mechanisms responsible

Being able to attribute the advances in MJO simulation to the relative-humidity-dependent formulation for organised entrainment has been a key result of H12. However, in order to move away from model specific conclusions and provide information that is relevant to the wider modelling community, the question of how the  $\varepsilon_{org}^{RH}$  formulation was able to achieve a more realistic representation of the MJO must be addressed. This was done in section 4 through the application of process based diagnostics which were designed to understand the physical mechanisms at work. This paper has shown that the introduction of  $\varepsilon_{org}^{RH}$  led to a better representation of the MJO through the mechanisms listed here and described in detail below:

- (a) the introduction of a tropospheric moisture control on deep convection.
- (b) a more realistic, precipitation-moisture relationship, due to (a).
- (c) a better simulation of the transition from shallow to deep convection by the moistening, or preconditioning, of the mid-troposphere, due to (b).

### (a) Tropospheric moisture control on convection

Through the commonly used CAPE closure for deep convection, the simulation of penetrative convective plumes in NWP models is often closely linked to the amount of CAPE in an atmospheric column. The build up of tropospheric moisture, however, has been shown to be more important than the build up of CAPE for the accurate simulation of the transition to deep convection (e.g. [Redelsperger et al., 2002](#); [Derbyshire et al., 2004](#); [Waite and Khouider, 2010](#)). CAPE is mainly sensitive to moisture in the boundary layer; a CAPE closure for deep convection was held responsible for the missing link between environmental moisture and convective mass transport which led to a poor simulation of the MJO in CAM ([Thayer-Calder and Randall, 2009](#)). The CAPE formulation in the IFS does show some sensitivity to the environment by using the updraught temperature, produced from the full entrainment rate, in its calculation. However, the work presented in this paper supports the shift from CAPE-sensitive to moisture-sensitive formulations for convection. The post-Cy32r3 IFS still has a CAPE closure for deep convection, but in recognition of the importance of environmental humidity the  $\varepsilon_{org}^{RH}$  formulation increases the sensitivity of convection to free-tropospheric moisture. By implementing a formulation that increases entrainment in dry environmental conditions and decreases it in a moist environment, the intensity of convection is controlled by the amount of water in the atmospheric column, not just the moisture in the boundary layer. However, it is not just the humidity-dependent factor in the formulation for organised entrainment which is important to the simulation of cumulus convection, [de Rooy et al. \(2012\)](#) show that it is also crucial that the overall entrainment rate is large. Strong entrainment at the cloud base, necessitating a vertical scaling function which decreases with height, is also shown to provide strong sensitivity to environmental moisture.

### (b) Modified precipitation-moisture relationship

The introduction of  $\varepsilon_{org}^{RH}$  and resulting tropospheric moisture control on convection has been shown to modify the relationship between precipitation and moisture (section 4.1). With  $\varepsilon_{org}^{RH}$ , the IFS is able to build up more moisture in the atmospheric column before it starts being removed by precipitation. This prevents the IFS from producing weak convection too often, and ensures that heavy rainfall can only occur when the column is sufficiently moist. In general, the modified precipitation-moisture relationship is more realistic compared with observations. However, with  $\varepsilon_{org}^{RH}$ , the IFS is shown to overestimate precipitation at the humid end of the distribution, a problem that also occurs in SP-CAM simulations

(Zhu *et al.*, 2009).

### (c) Improved preconditioning of the tropical atmosphere

The modified precipitation-moisture relationship and tropospheric control on moisture, more specifically the increased dry-air entrainment in low-humidity environments, has led to an IFS that is better able to simulate the transition to deep convection. With the  $\varepsilon_{org}^{RH}$  formulation, dry-air entrainment dilutes ascending plumes in a dry environment. This inhibits the premature development of deep, penetrative convection, a problem previously shown to lead to a poor representation of the MJO (Lin *et al.*, 2006). As a result of forcing convection to terminate lower in a dry environment, more convective plumes detrain in the mid-troposphere. This is evident by the increase in the occurrence of cumulus congestus (4), which results in a more realistic trimodal structure of tropical cloud that is apparent in observations (Johnson *et al.*, 1999) and modelling studies (Inness *et al.*, 2001; Lin *et al.*, 2012). The detraining congestus at the melting layer moisten the surrounding environment, acting to recharge the tropical atmosphere so that succeeding convective plumes can penetrate further into the free troposphere. Due to the modified precipitation-moisture relationship described above, during this transition phase more moisture can build up without being released, so that when deep convection does occur it is supported by a moist environment. It has been shown that, through this mechanism, the suppressed phase of the MJO is more suppressed and the transition to the deep, active phase is more realistic. The processes described above are consistent with the 'discharge-recharge' theory of the MJO (Bladé and Hartmann, 1993; Yano and Plant, 2012), in which instability builds up through moistening by low- and mid-level clouds ('recharge'), before the moisture is removed by deep convection (discharge). Furthermore, it has been shown that the  $\varepsilon_{org}^{RH}$  formulation creates a feedback between convection and the large-scale circulation; dry-air entrainment results in more cumulus congestus which moisten the environment, while a moister environment promotes deep convection and strengthens the large-scale circulation. Grabowski and Moncrieff (2004) showed that this mechanism, referred to as the moisture-convection feedback, was responsible for improvements in MJO simulations with a cloud-resolving convective parameterization.

### Acknowledgements

The author would like to thank the National Environmental Research Council (NERC) for providing the PhD scholarship that made this work possible and ECMWF for their support of this work.

### References

- Bechtold P, Köhler M, Jung T, Doblas-Reyes F, Leutbecher M, Rodwell MJ, Vitart F, Balsamo G. 2008. Advances in simulating atmospheric variability with the ECMWF model: From synoptic to decadal time-scales. *Q. J. R. Meteorol. Soc.* **134**: 1337–1351.
- Bladé I, Hartmann DL. 1993. Tropical Intraseasonal Oscillations in a Simple Nonlinear Model. *J. Atmos. Sci.* **50**(17): 2922–2939.
- Bretherton CS, Peters ME, Back LE. 2004. Relationships between Water Vapor Path and Precipitation over the Tropical Oceans. *J. Climate.* **17**: 1517–1528.
- de Rooy WC, Bechtold P, Frölich K, Hohenegger C, Jonker H, Mironov D, Siebesma AP, Teixeira J,

- Yano JI. 2012. Entrainment and detrainment in cumulus convection: an overview. *Q. J. R. Meteorol. Soc.* .
- Derbyshire SH, Beau I, Bechtold P, Grandpeix JY, Piriou JM, Redelsperger JL, Soares PMM. 2004. Sensitivity of moist convection to environmental humidity. *Q. J. R. Meteorol. Soc.* **130**: 3055–3079.
- Grabowski WW. 2003. MJO-like Coherent Structures: Sensitivity Simulations using the Cloud-Resolving Convection Parameterization (CRCP). *J. Atmos. Sci.* **60**: 847–864.
- Grabowski WW, Moncrieff MW. 2004. Moisture-convection feedback in the tropics. *Q. J. R. Meteorol. Soc.* **130**: 3081–3104.
- Hirons LC, Inness P, Vitart F. 2012. Understanding advances in the simulation of intraseasonal variability in the ECMWF model. Part I: The representation of the MJO. *Q. J. R. Meteorol. Soc.* .
- Holloway C, Woolnough SJ, Lister GMS. 2012. Precipitation distributions for explicit versus parametrized convection in large-domain high-resolution tropical case study. *Q. J. R. Meteorol. Soc.* .
- Holloway CE, Neelin JD. 2009. Moisture Vertical Structure, Column Water Vapour, and Tropical Deep Convection. *J. Atmos. Sci.* **66**: 1665–1683.
- Inness PM, Slingo JM, Guilyardi E, Cole J. 2003. Simulation of the Madden-Julian Oscillation in a Coupled General Circulation Model: Part II: The Role of the Basic State. *J. Climate.* **16**: 365–382.
- Inness PM, Slingo JM, Woolnough SJ, Neale RB, Pope VD. 2001. Organization of tropical convection in a GCM with varying vertical resolution; implications for the simulation of the Madden-Julian Oscillation. *Climate Dynamics* **17**: 777–793.
- Johnson RH, Rickenbach TM, Rutledge SA, Ciesielski PE, Schubert WH. 1999. Trimodal Characteristics of Tropical Convection. *J. Climate.* **12**: 2397–2418.
- Kim D, K, Stern W, Waliser D, Kang IS, Maloney ED, Wang W, Weickmann K, J Benedict MK, Lee MI, Neale R, Suarez M, Thayer-Calder K, Zhang G. 2009. Application of MJO Simulation Diagnostics to Climate Models. *J. Climate.* **22**: 6413–6436.
- Klingaman N. 2011. Using a case-study approach to improve the MJO in the Hadley Centre climate model (HadGEM). In: *YOTC International Science Symposium & 8th AMY Workshop*. Beijing, China.
- Lin JL, Kiladis GN, Mapes BE, Weickmann KM, Sperber KR, Lin W, Wheeler MC, Schubert SD, Genio AD, Donner LJ, Emori S, Gueremy JF, Hourdin F, Rasch PJ, Roeckner E, Scinocca JF. 2006. Tropical Intraseasonal Variability in 14 IPCC AR4 Climate Models. Part I: Convective Signals. *J. Climate.* **19**: 2665–2690.
- Lin X, Johnson RH. 1996. Heating, Moistening and Rainfall over the Western Pacific Warm Pool during TOGA COARE. *J. Atmos. Sci.* **53**: 3367–3383.
- Lin Y, Donner LJ, Petch J, Bechtold P, Boyle J, Klein S, Komori T, Wapler K, Willett M, Xie X, Zhao M, Xie S, McFarlane SA, Schumacher C. 2012. Twp-ice global atmospheric model intercomparison: convection responsiveness and resolution impact. *J. Geophys. Res.* **117**: D09 111,doi:10.1029/2011JD017 018.
- Ray P, Zhang C, Moncrieff MW, Dudhia J, Caron JM, Leung LR, Bruyere C. 2011. Role of the atmospheric mean state on the initiation of the Madden-Julian Oscillation in a tropical channel model. *Climate Dynamics* **36**: 161–184.

- Raymond DJ. 2000. Thermodynamic control of tropical rainfall. *Q. J. R. Meteorol. Soc.* **126**: 889–898.
- Raymond DJ, Fuchs Z. 2009. Moisture modes in the Madden-Julian Oscillation. *J. Climate.* **22**: 3031–3046.
- Redelsperger JL, Parsons DB, Guichard F. 2002. Recovery processes and factors limiting cloud-top height following the arrival of a dry intrusion observed during TOGA-COARE. *J. Atmos. Sci.* **59**: 2438–2457.
- Sperber KR, Gualdi S, Legutke S, Gayler V. 2005. The Madden-Julian Oscillation in ECHAM4 Coupled and Uncoupled GCMs. *Climate Dynamics* **25**: 117–140.
- Thayer-Calder K, Randall DA. 2009. The Role of Convective Moistening in the Madden-Julian Oscillation. *J. Atmos. Sci.* **66**: 3297–3312.
- Waite ML, Khouider B. 2010. The Deepening of Tropical Convection by Congestus Preconditioning. *J. Atmos. Sci.* **67**: 2601–2615.
- Waliser DE, Sperber KR, Hendon HH, Kim D, Maloney ED, Wheeler MC, Weickmann KM, Zhang C, Donner L, Gottschalck J, Higgins W, Kang IS, Legler D, Moncrieff M, Schubert S, Stern W, Vitart F, Wang B, Wang W, Woolnough SJ. 2009. MJO Simulation Diagnostics. *J. Climate.* **22**: 3006–3030.
- Yano JI, Plant R. 2012. Finite departure from convective quasi-equilibrium: periodic cycle and discharge-recharge mechanism. *Q. J. R. Meteorol. Soc.* **138**: 626–637.
- Zhang C, Dong M, Gualdi S, Hendon HH, Maloney ED, Marshall A, Sperber KR, Wang W. 2006. Simulations of the Madden-Julian Oscillation in four pairs of coupled and uncoupled global models. *Climate Dynamics* **27**: 573–592.
- Zhu H, Hendon HH, Jakob C. 2009. Convection in a Parameterized and Superparameterized Model and Its Role in the Representation of the MJO. *J. Atmos. Sci.* **66**: 2796–2811.