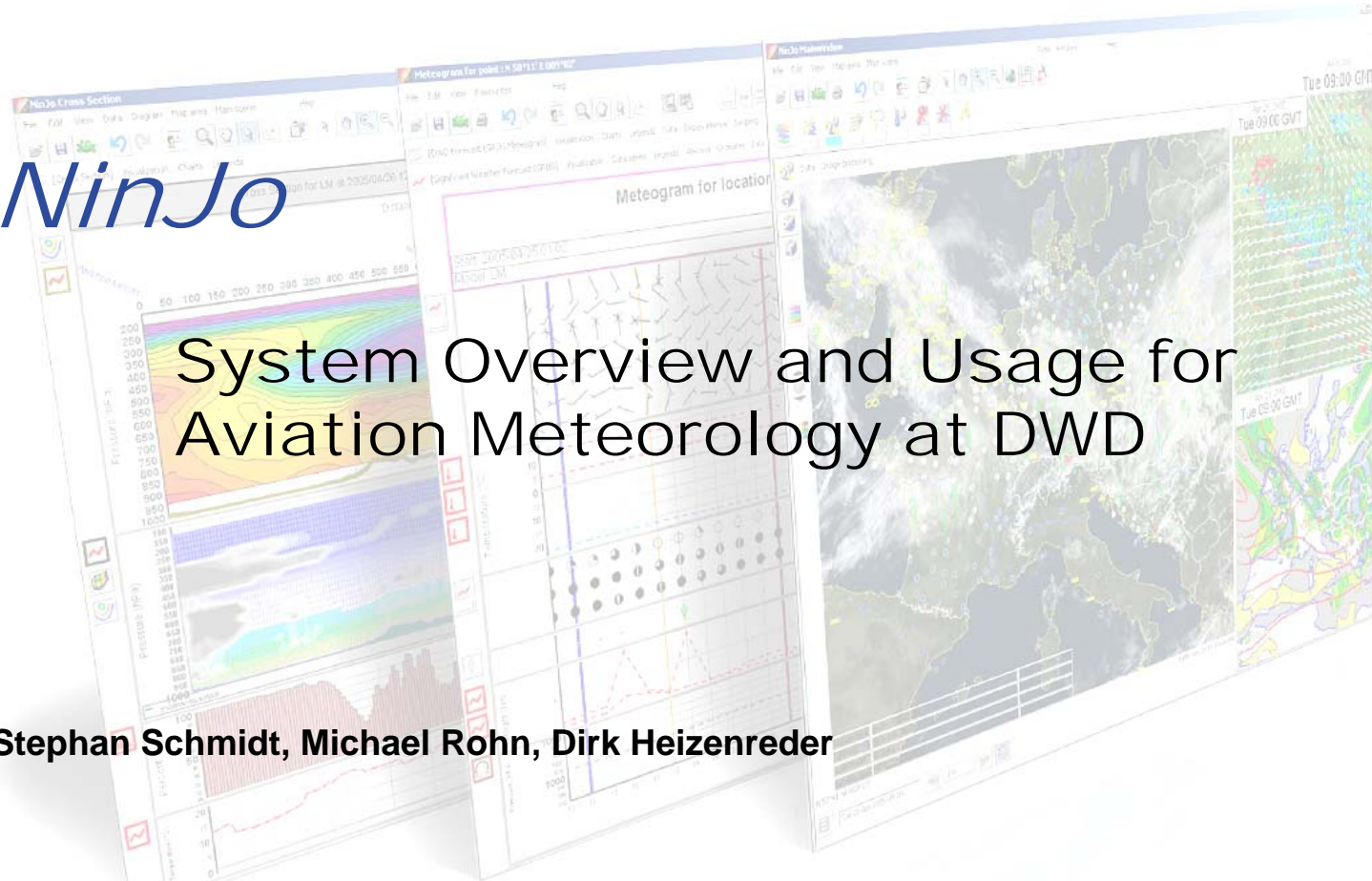


NinJo

System Overview and Usage for Aviation Meteorology at DWD

Stephan Schmidt, Michael Rohn, Dirk Heizenreder

**12th Workshop on Meteorological Operational Systems
ECMWF, 2-6 November 2009**



Outline

1. Overview, latest features, and status
2. Usage for aviation forecast at DWD

→ *Live-Demo during this week !*

where we are →



***NinJo* - joint development of meteorological workstation**

(1) Improve forecasting processes within the Consortium

- Visualization of met Data (OBS, Radar, SAT, NWP,...)
- Production and Warning processes (IGE, EPM, Batch, OSA, MMO)
- Delivery of services to the customer

(2) Share resources for development and maintenance

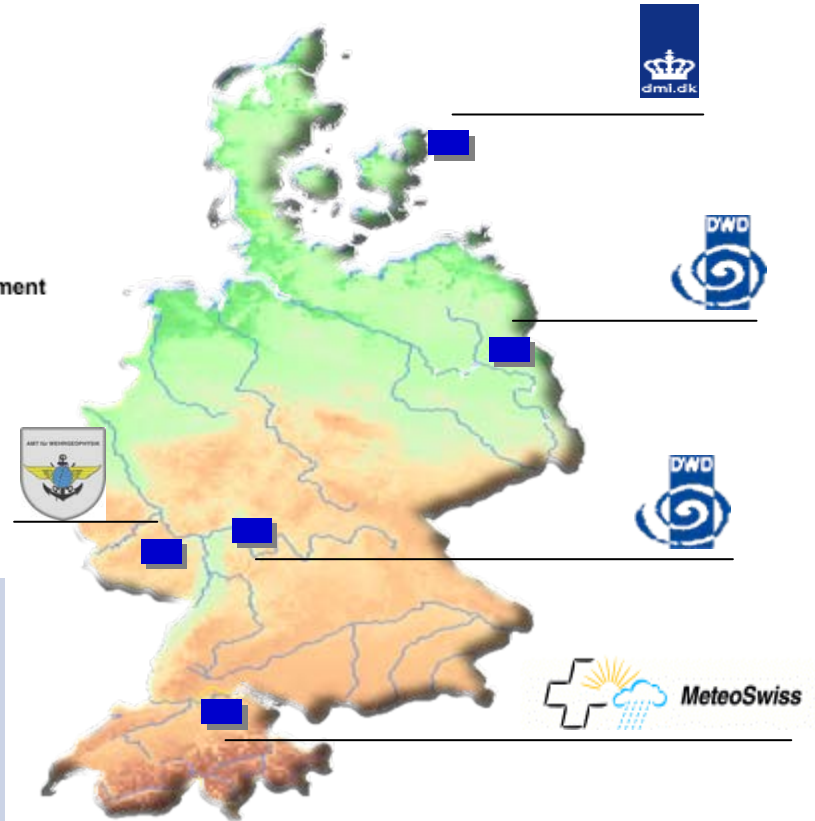
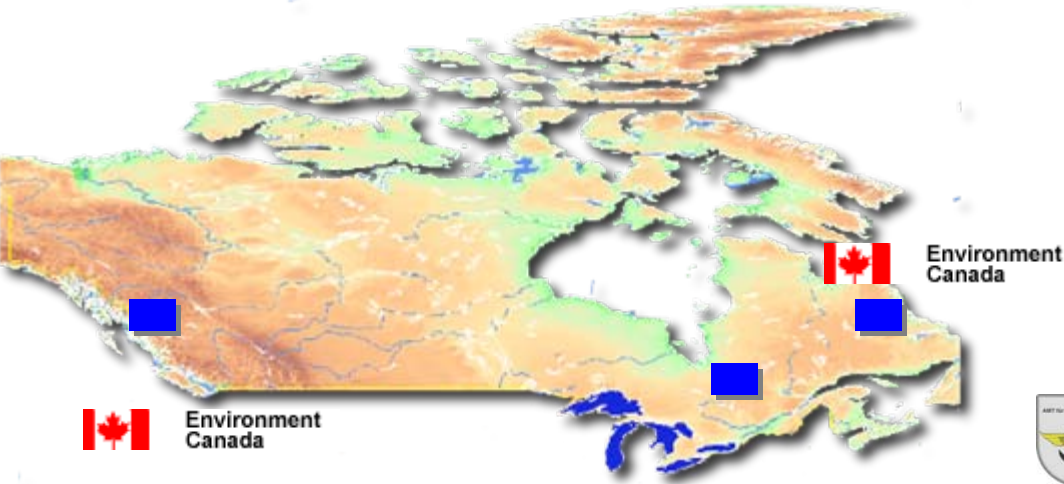
- Each partner provides resources for development and maintenance
- Personal and financial resources

(3) Licensing of the NinJo-Software

- User licensing income for maintenance and further development
- Licensees profit also from that way of working
- Licensing information: [www.ninjo-workstation.com]



NinJo Consortium

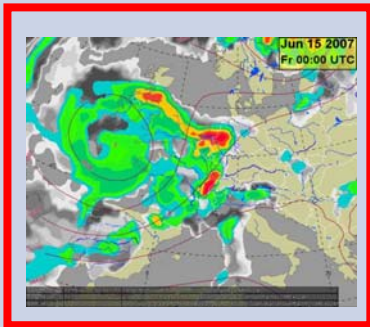


- International collaboration
- Contract of the consortium signed 2006
- Contract committed 2009

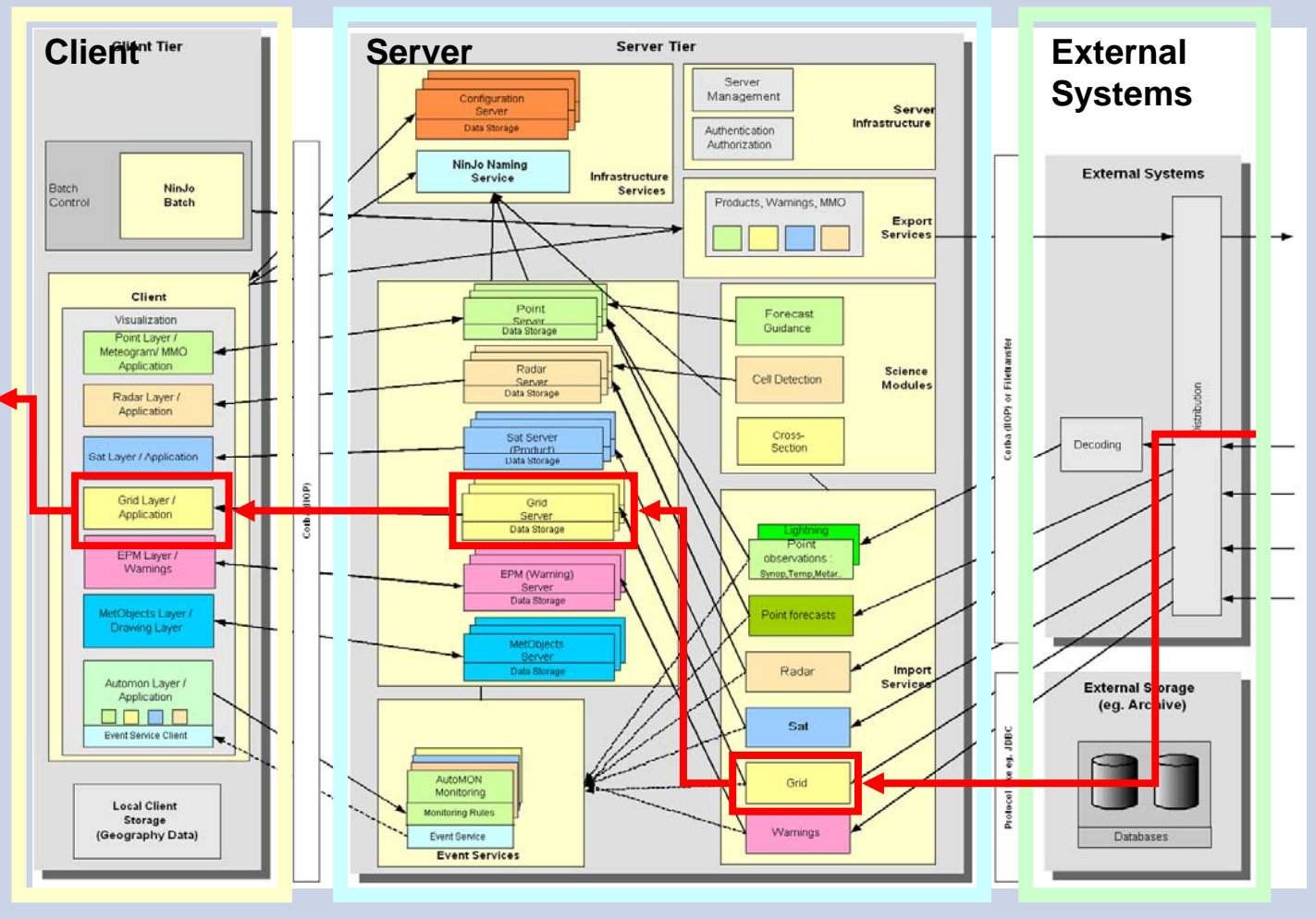


NinJo - modular technical design

Modular structure
eg. GRIB data
↓
GridLayer



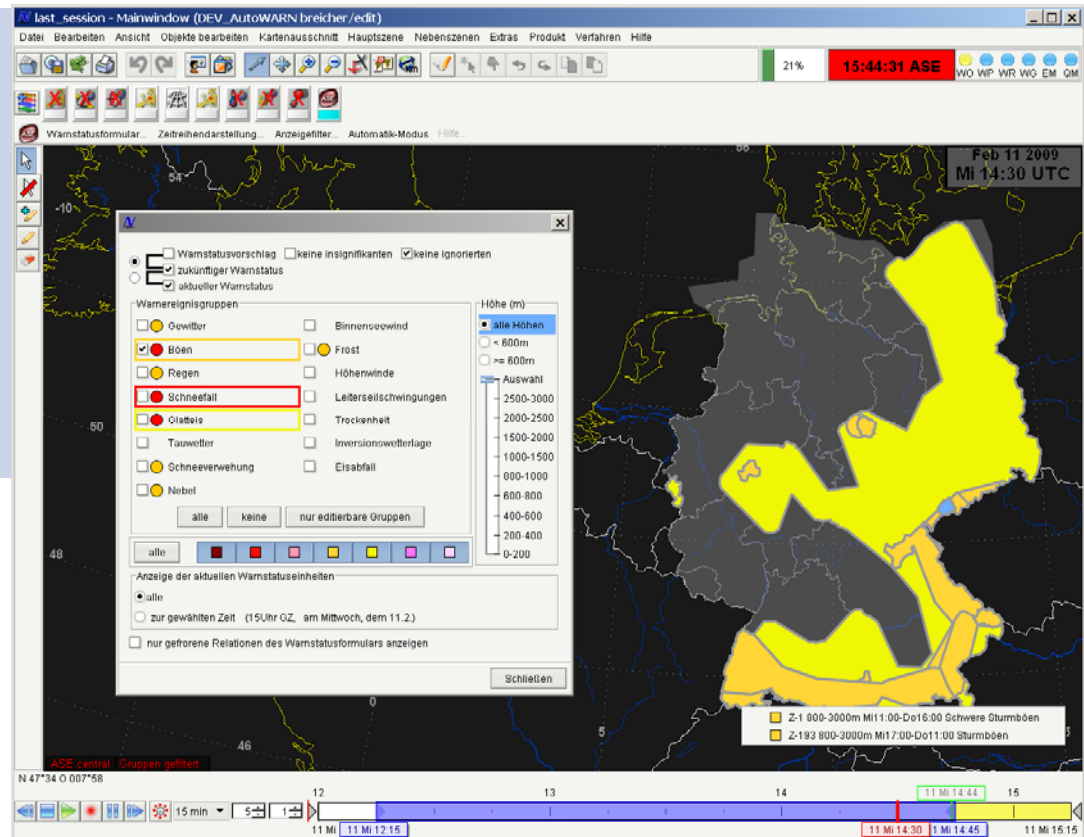
Many data types
GRID, BUFR,
Radar, Satellite,
warnings, cells,
points, areas, ...



NinJo - new features : „AutoWARN“

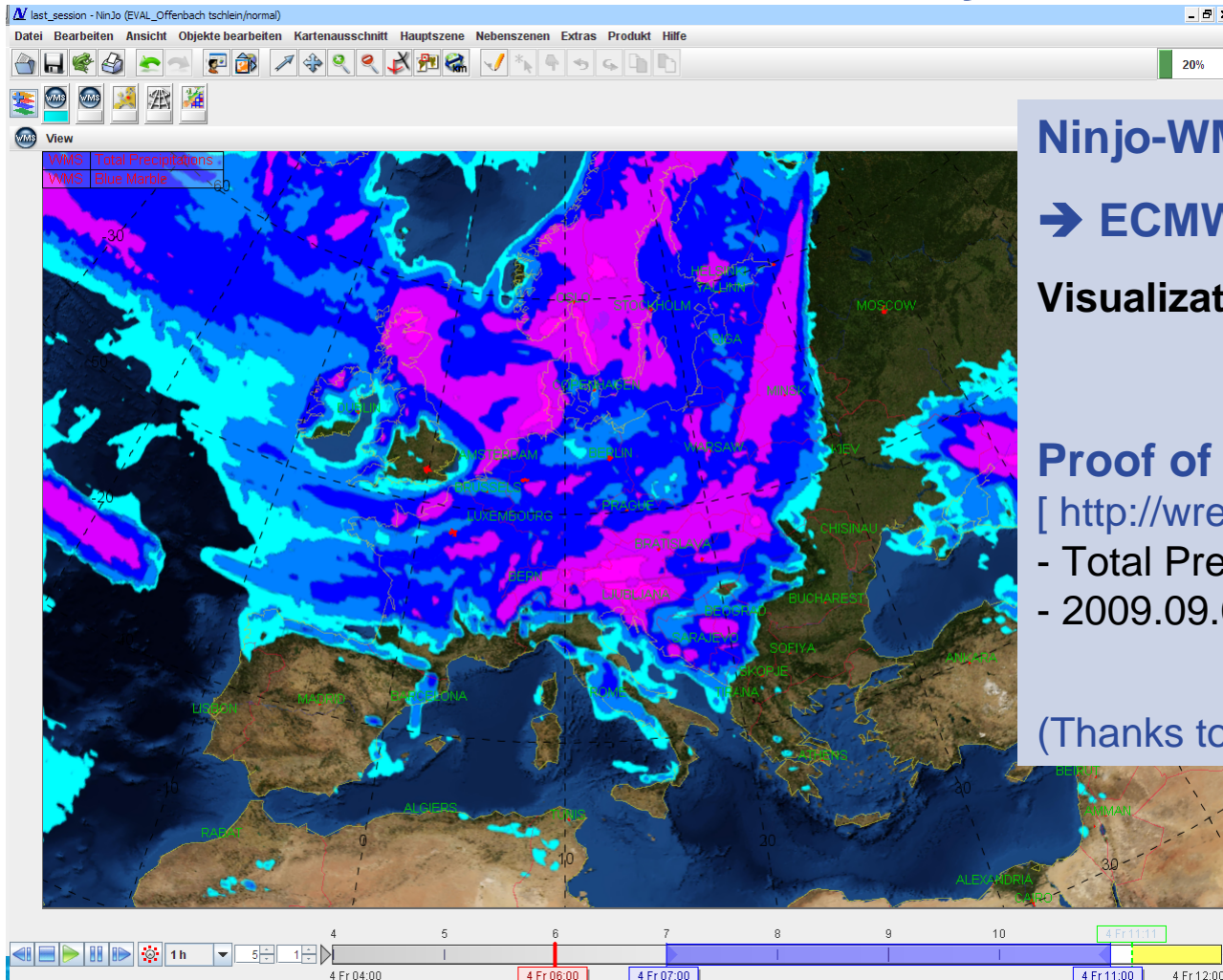
Project **AutoWarn** finished at DWD

- automatic generation of warning status from various data sources (observation, model, MOS-postprocessing)
- support to warning process



→ Bernhard.Reichert@dwd.de

NinJo - new features : „WMS Layer”



NinJo-WMS-Layer

→ ECMWF-WMS-Server

Visualization of existing WMS-data

Proof of Concept with

[<http://wrep.ecmwf.int/wms/>]

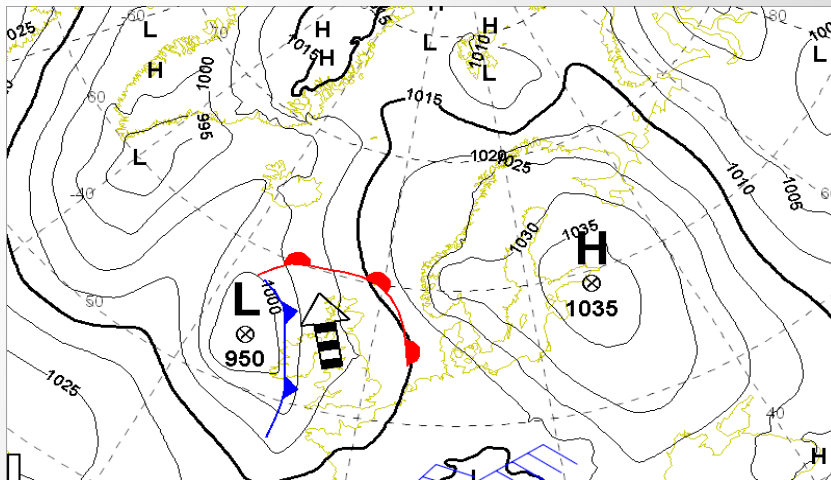
- Total Precipitation

- 2009.09.04 – 06:00 UTC

(Thanks to ECMWF)

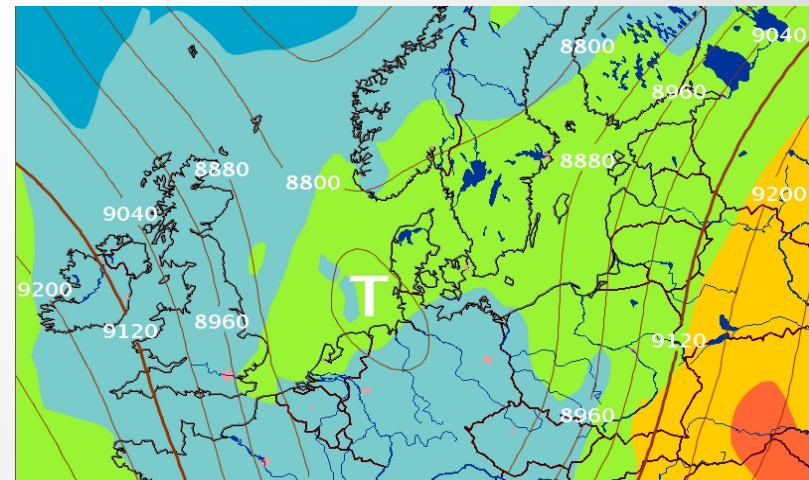
NinJo - Scheduled Meteorological Product Creation

interactive
ProductWorkbench
→ *interactive editing*



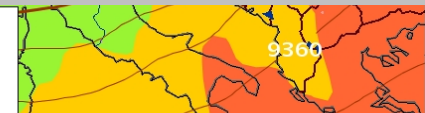
**since October 2009: operational
Significant Weather Chart (SWC)**

non-interactive
NinJo Batch
→ *parametrization*



Prototype and testing

Geopotential 300 hPa (gpm)
Temperatur 850 hPa (°C)
VT: Sat 04 Oct 2008 06 UTC (00+126h)
(c) 2008 Deutscher Wetterdienst



NinJo – Operational usage within consortium

... at MSC

- ❑ 2009: operational parallel with legacy system
- ❑ replacement of legacy system with NinJo-1.3.4
- ❑ 134 Clients, 65 Servers



MET-Office Frankfurt

application example for aviation meteorology

... at DMI

- ❑ operational at all sites since 2007
- ❑ 14 Clients, 8 Servers



... at DWD

- ❑ operational at all sites since 2007
- ❑ 350 Clients, 90 Servers



... at MeteoSuisse

- ❑ operational at all sites since 2007
- ❑ 25 Clients, 5 Server



Using NinJo at Frankfurt Advisory Centre for Aviation



Michael Rohn, Stephan Schmidt



MET-Office Frankfurt Advisory Centre for Aviation

with a view over the
airfield and the runways



Forecasters are working in 24/7 shift work

20 employees

5 workplaces, each with:

- 1 PC / 2 screens**
- 1 NinJo PC / 2 screens**
- The SWC workplace with 1 additional NinJo PC / 2 screens**



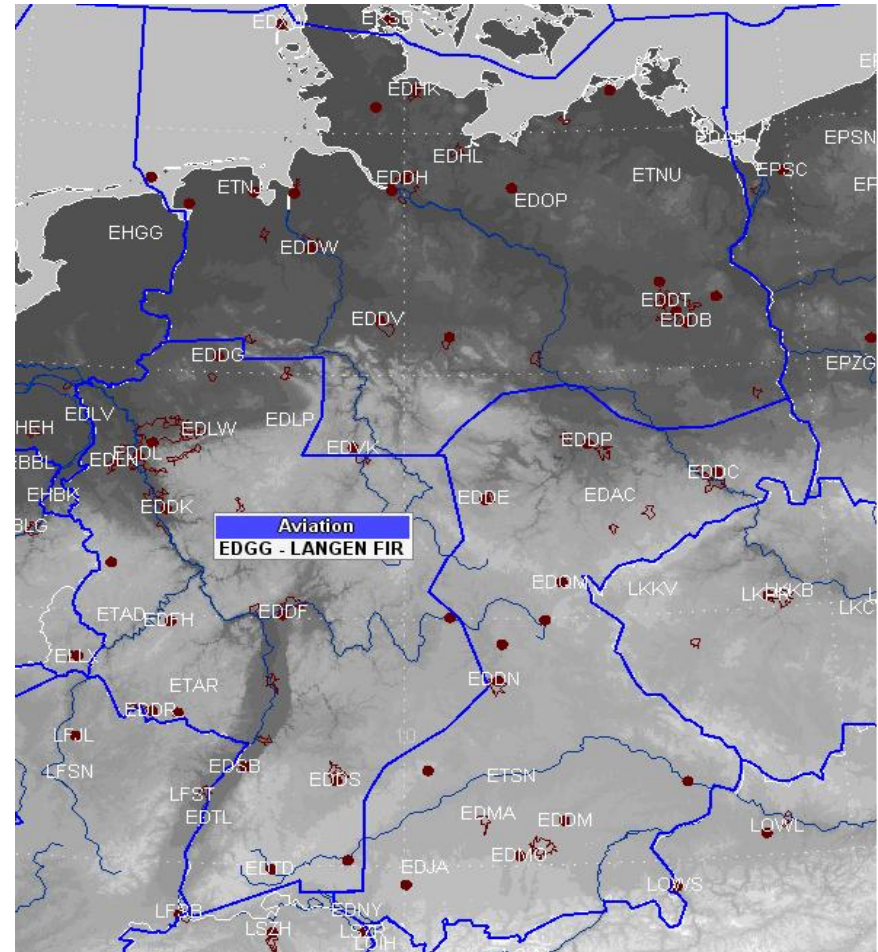
Duties and responsibilities of Advisory Centre Frankfurt

- MET-Office Frankfurt is a Meteorological Watch Office (MWO)
- TAF for EDDF, EDDR, EDFH, EDFM, EDVK, EDRZ
- TAF (4 pm – 6 am) for EDDS, EDSB, EDTL, EDTD
- TREND for EDDF, EDDR and EDDS (4 pm – 6 am)
- Airport warnings and GAFOR area warnings
- Weather reports for ballooning and soaring flight
- Advice and reports for Frankfurt Airport Air Traffic Management
- Briefing of SAR and General Aviation by phone

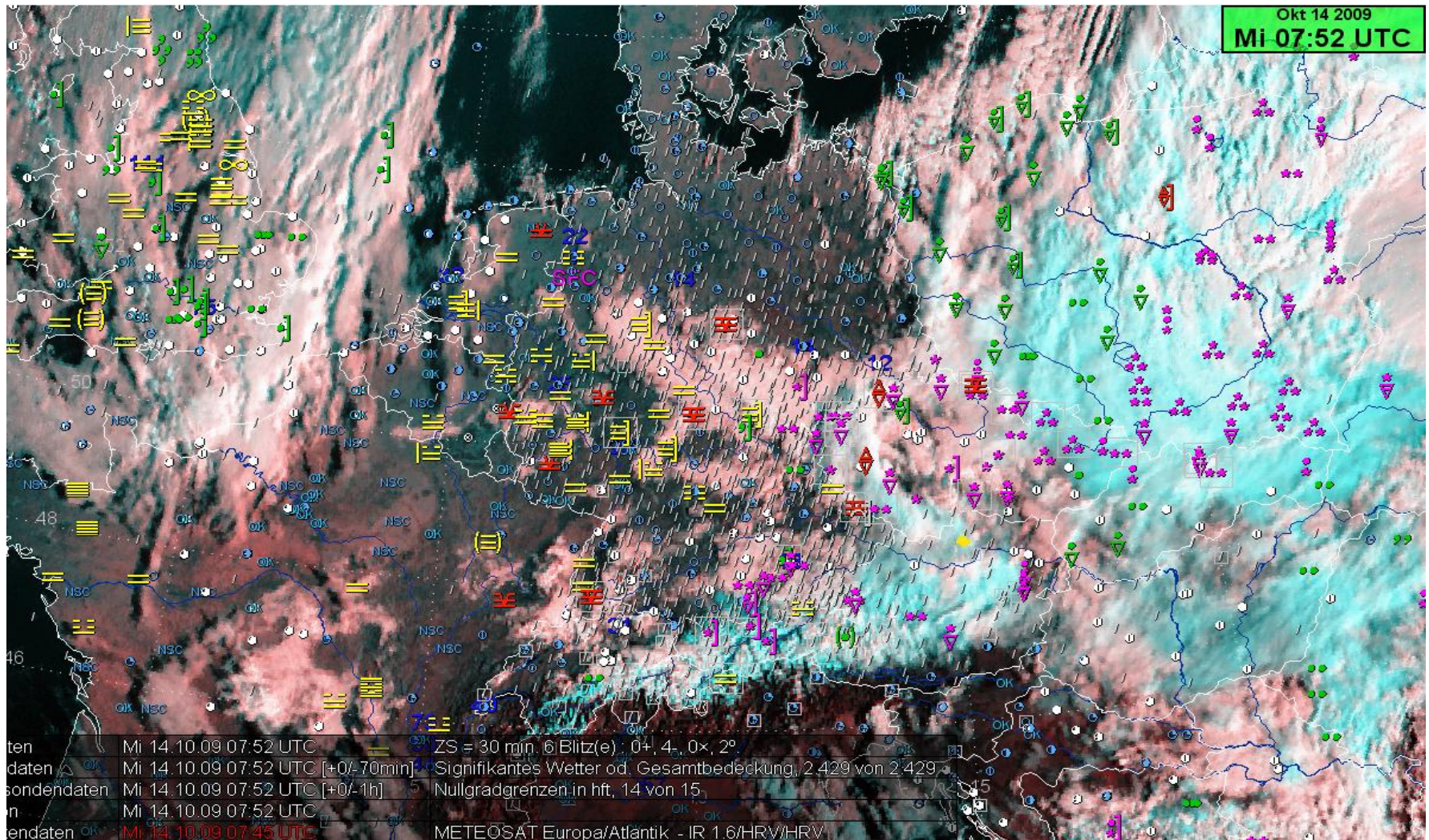
Duties and responsibilities of Advisory Centre Frankfurt

Airspace:

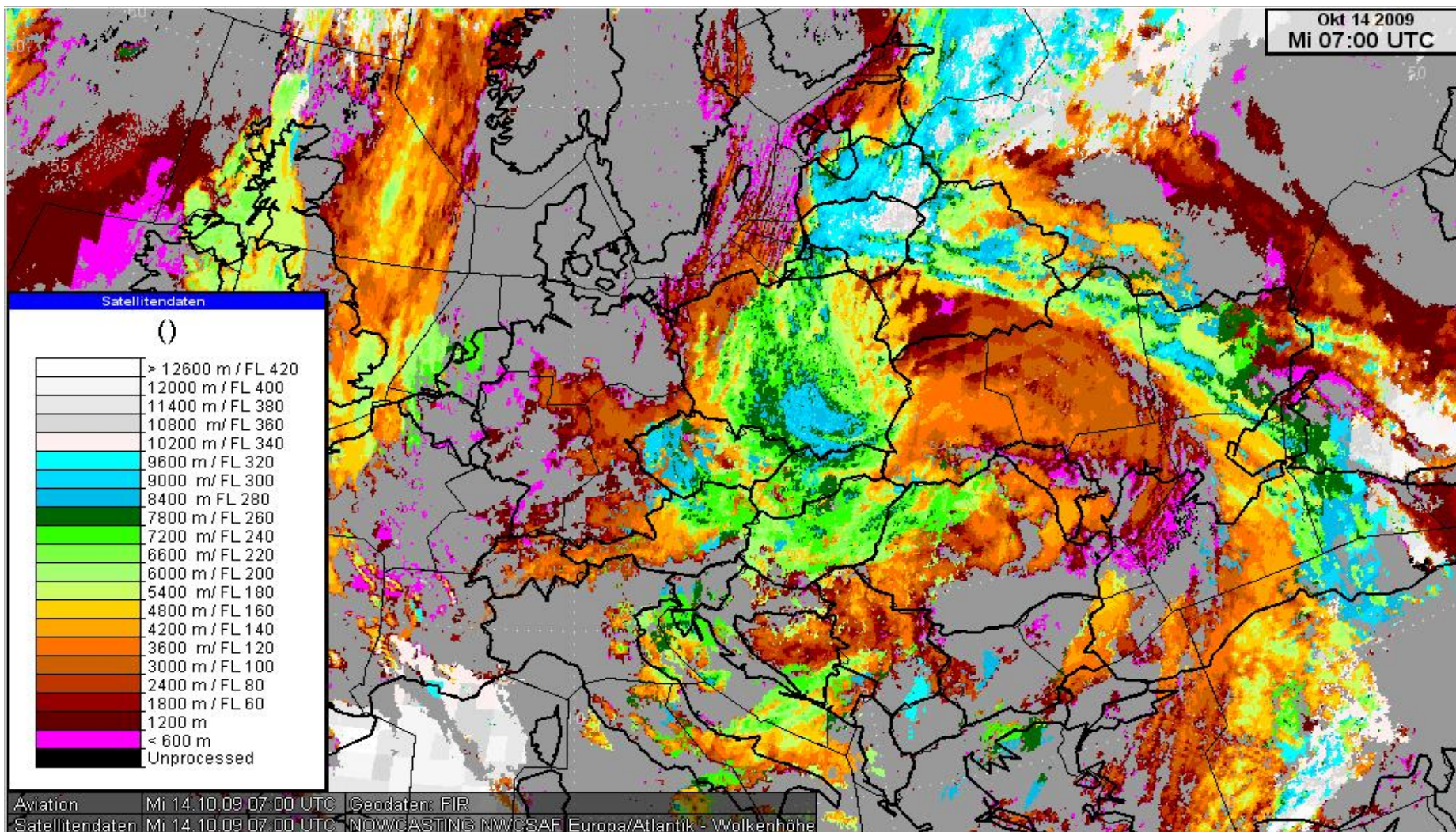
- SIGMET Langen FIR
- SIGMET Rhein UIR
- Significant Weather Chart (SWC)
- GAMET/AIRMET Langen FIR
- GAFOR for SW GERMANY
- Weather reports for Rhein control (Rhein UIR) and German Air Traffic Control



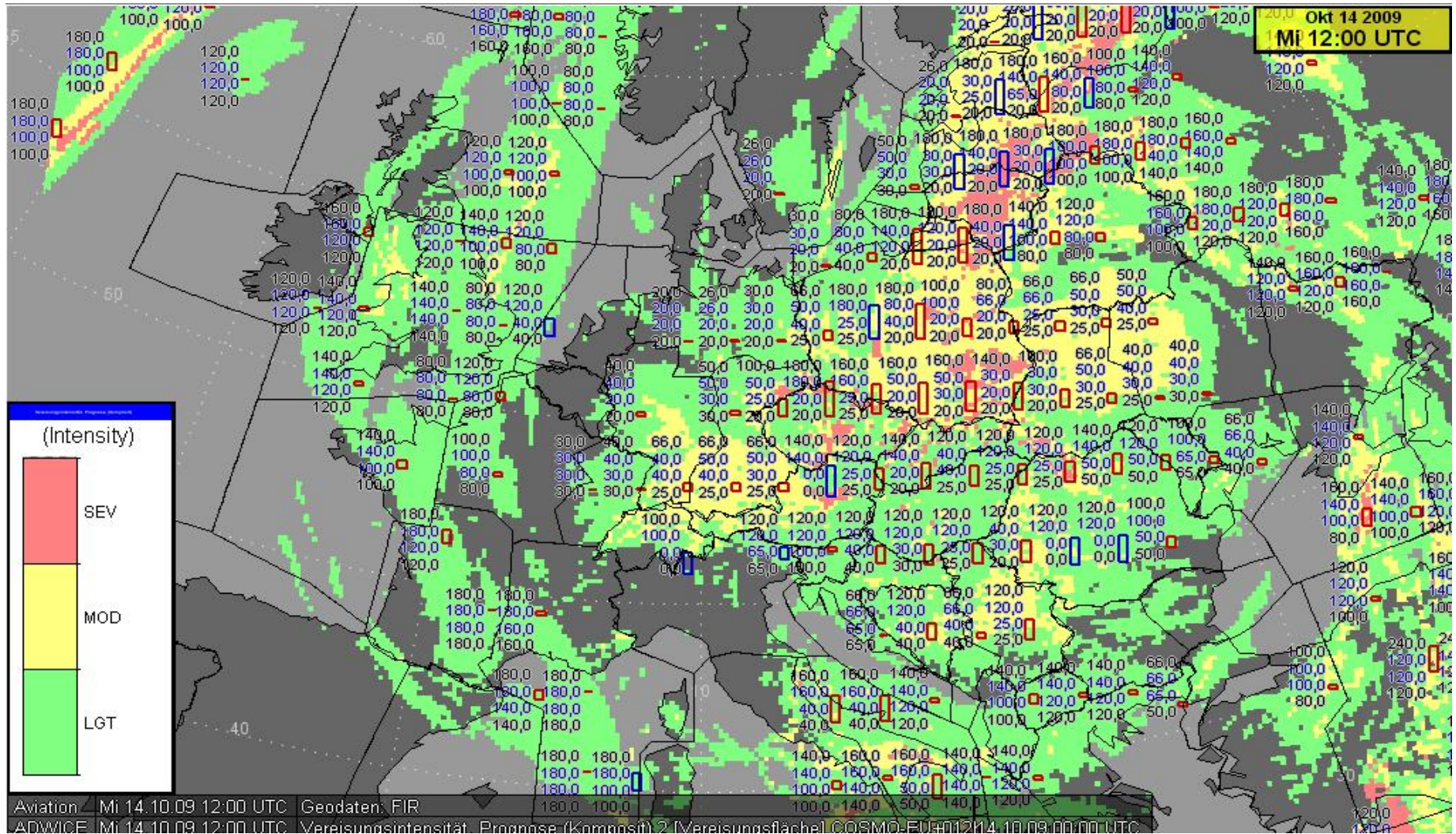
Using NinJo for weather monitoring and weather consultation



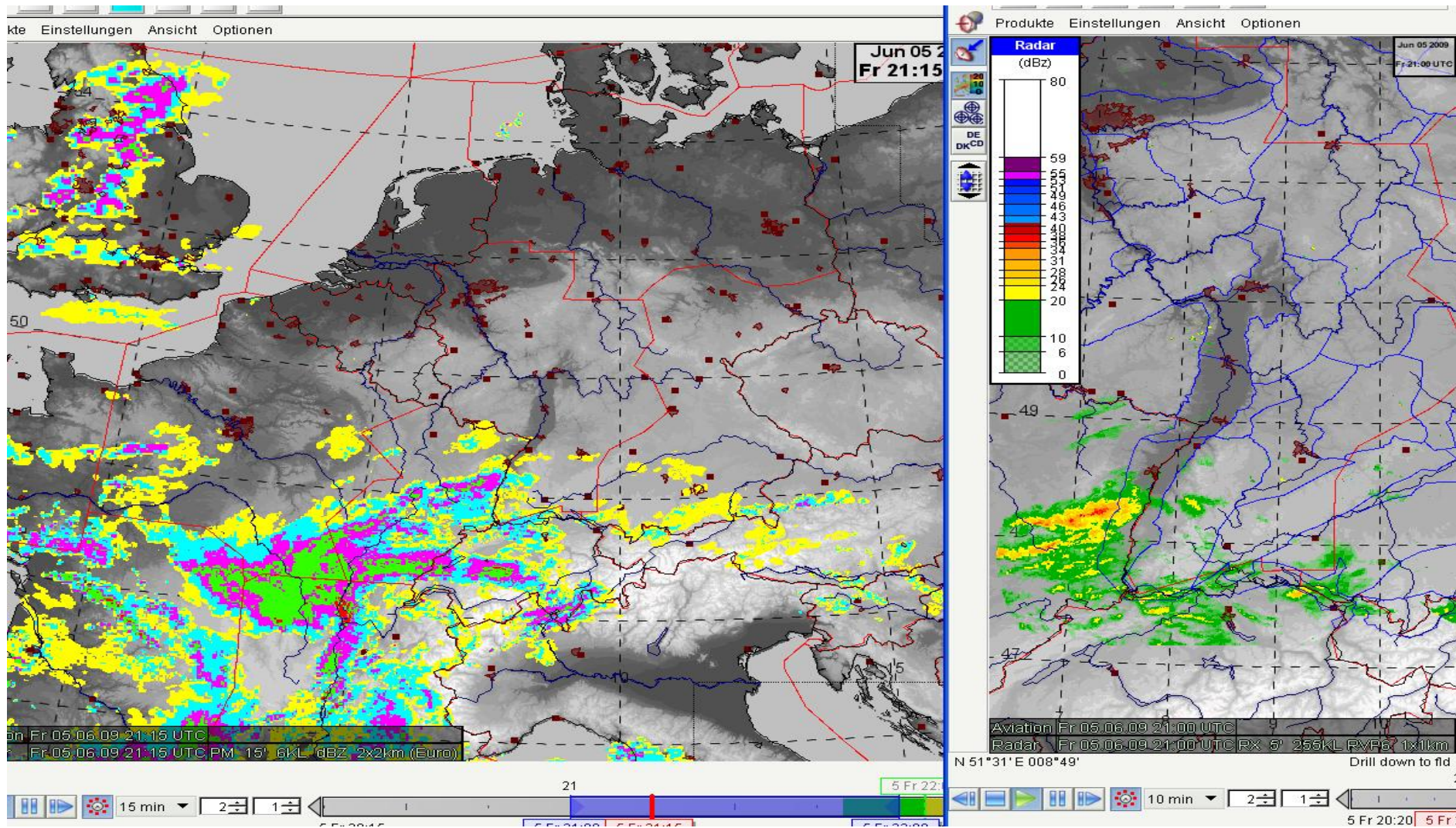
Information about cloud tops at the Satellite Layer



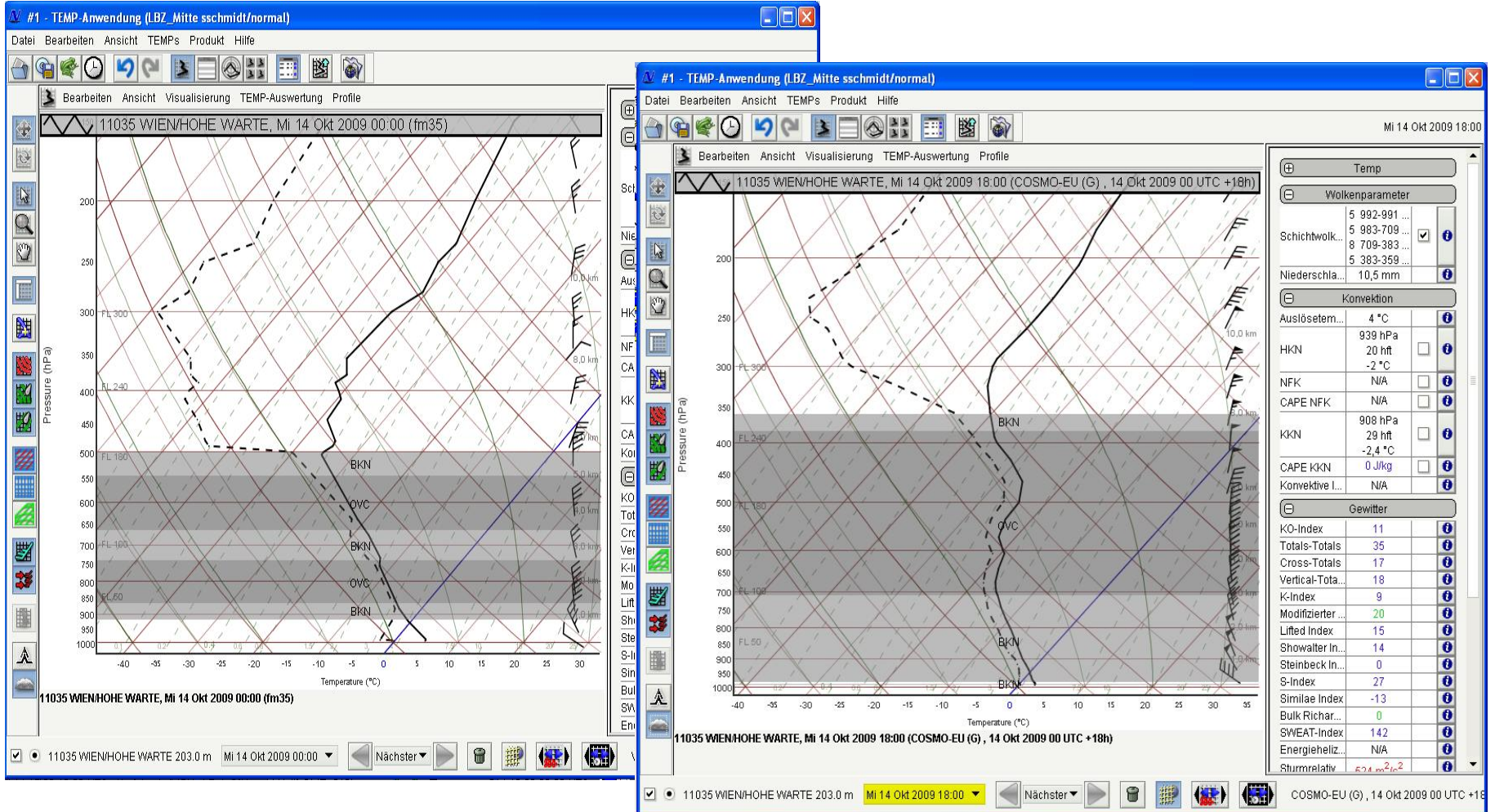
Icing forecast ADWICE available in NinJo



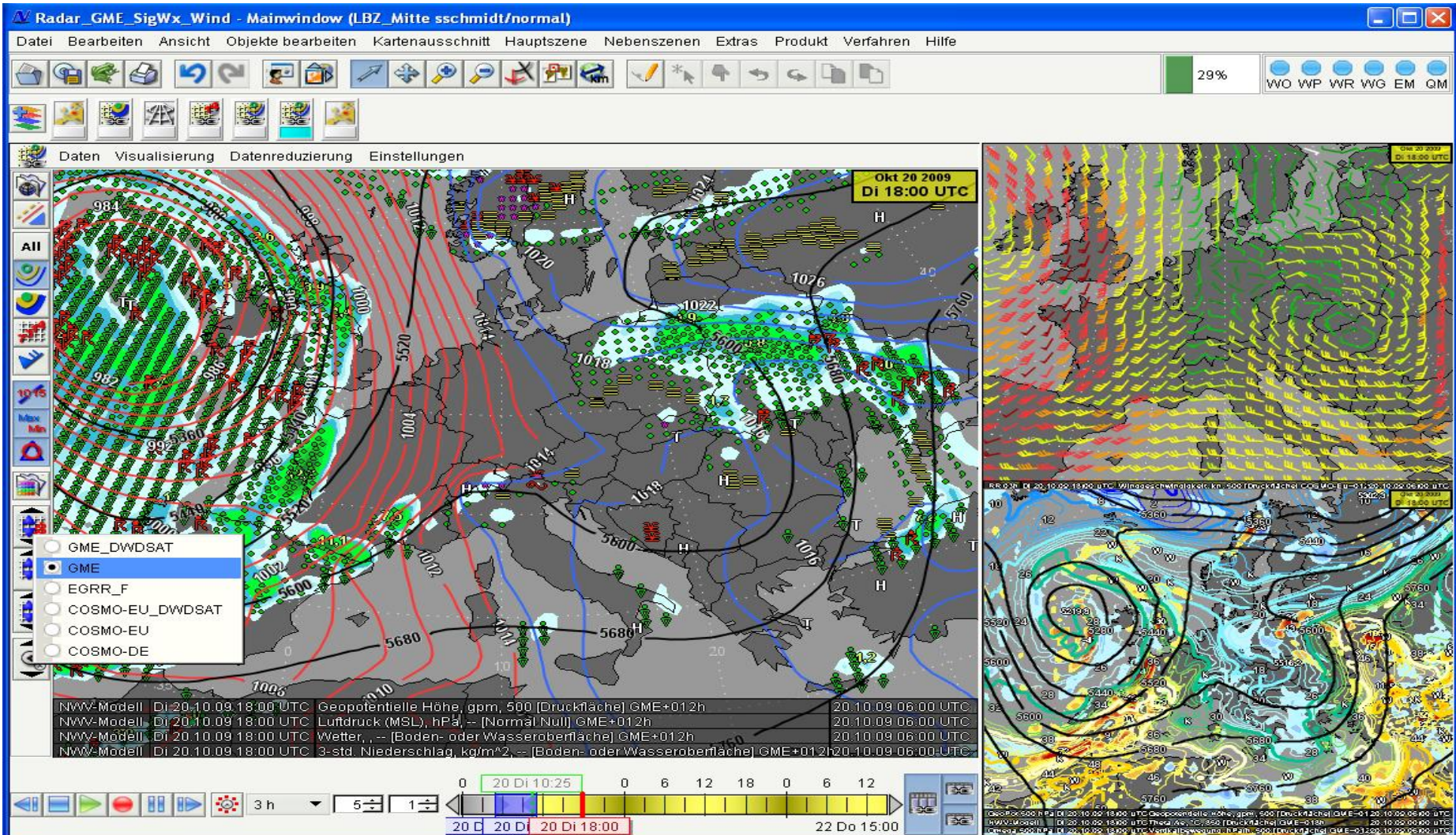
Radar Monitoring via display of FIR and GAFOR borderlines



Current Sounding data as well as prognosis Sounding data

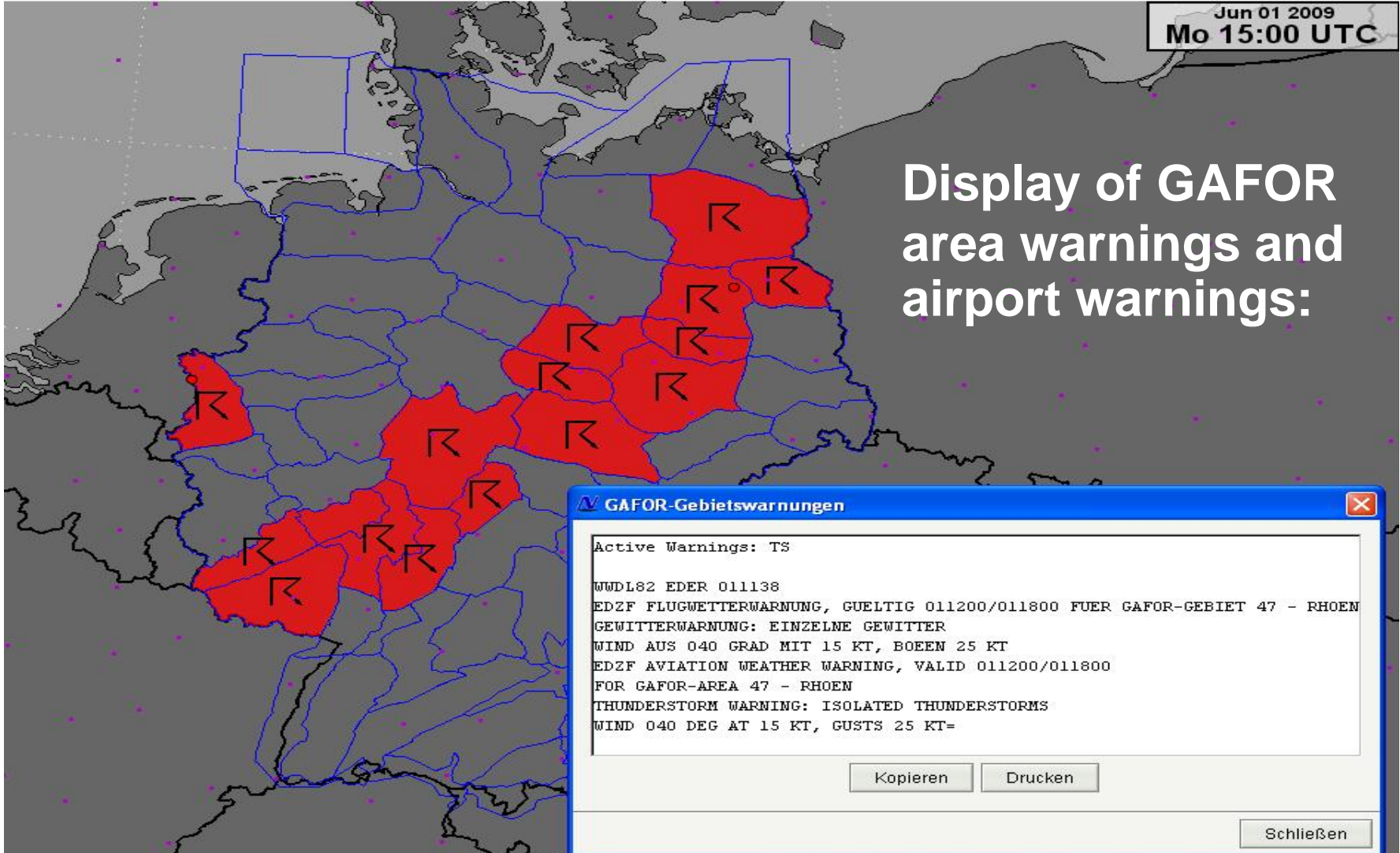


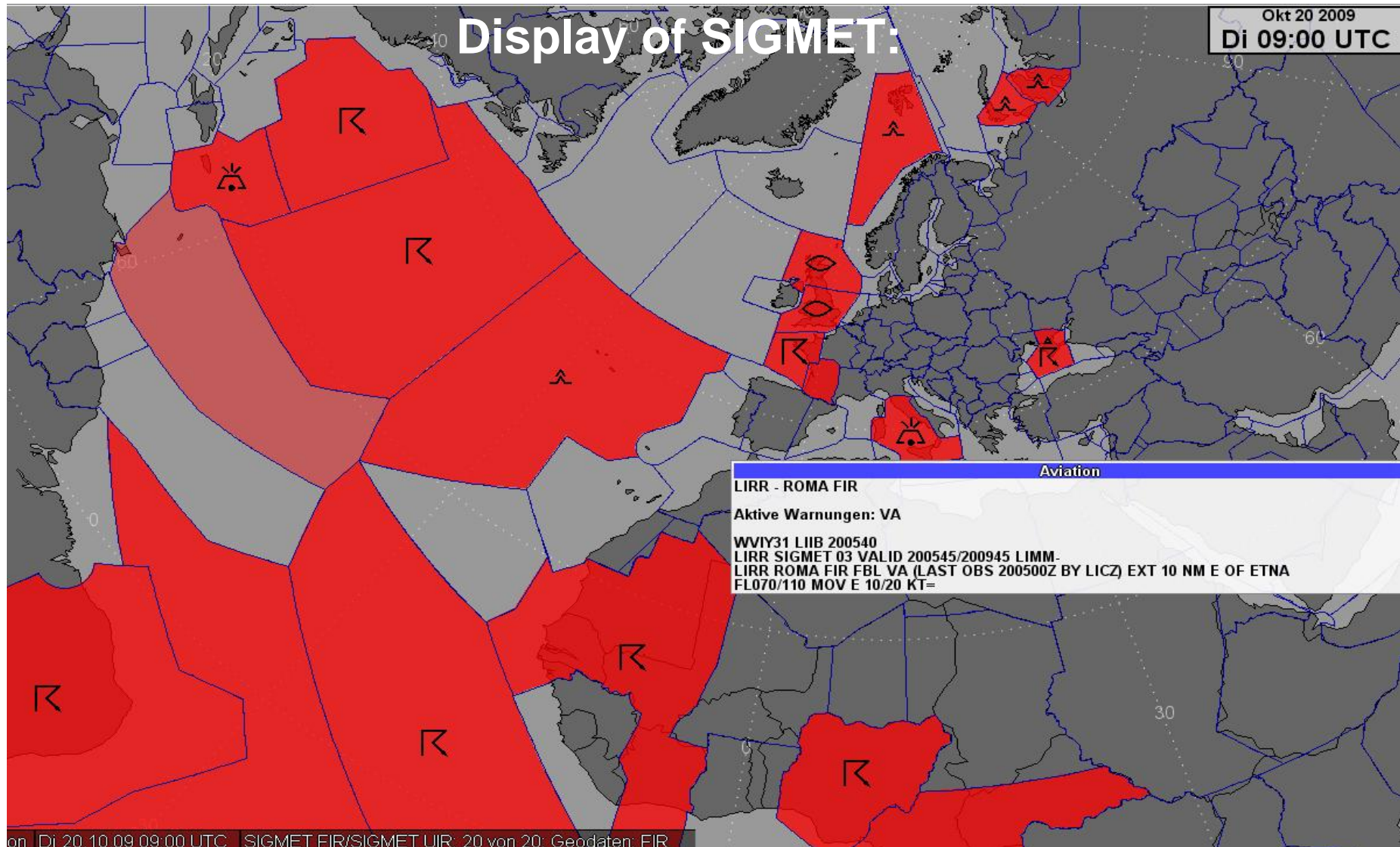
Model data at NinJo Mainscene and Secondary Scenes



Jun 01 2009
Mo 15:00 UTC

Display of GAFOR area warnings and airport warnings:







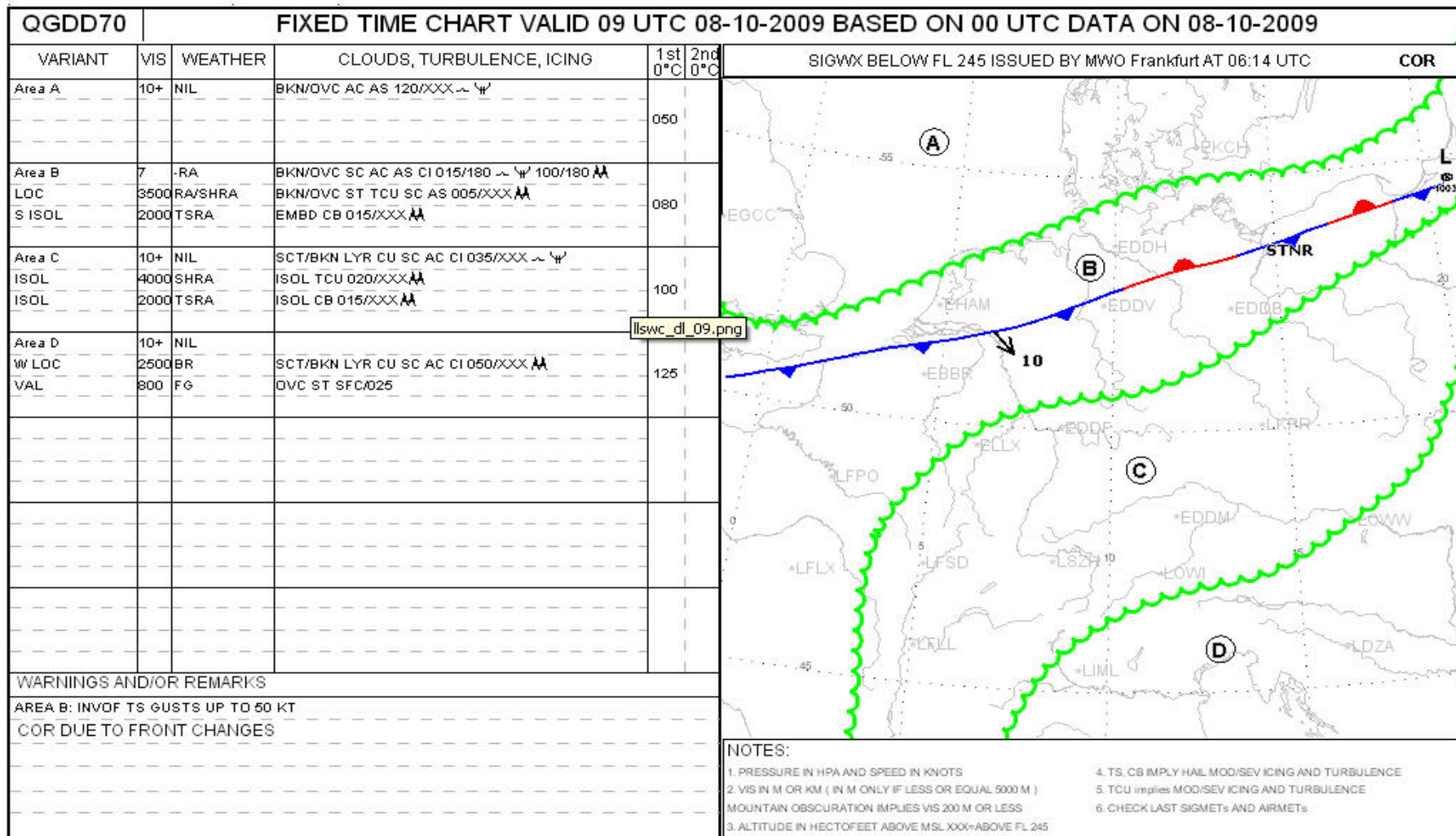
Okt 20 2009
Di 06:41 UTC

Display of METAR and TAF

Aviation
FTXN14 KAWN 200527 RRH
TAF EDDF 200500Z 2006/2112 06006KT CAVOK
TEMPO 2006/2008 4500 BR
PROB40 TEMPO 2102/2108 3500 BR BKN012=



Editing of Significant Weather Chart below FL245 with NinJo PWB Client:



MET-Office Frankfurt Advisory Centre for Aviation

Frankfurt Airport Terminal B

Address:

Deutscher Wetterdienst

LBZ Mitte

FAC 2, HBK 150/62

60549 Frankfurt Flughafen

Tel.: +49 69 697 1557 77

Mail: lbz.mitte@dwd.de

