

The Aviation Layer of NinJo

Dr. Björn-R. Beckmann

German Meteorological Service (DWD)

Department of Aeronautical Meteorology

E-Mail: Bjoern-Ruediger.Beckmann@dwd.de

Contents:

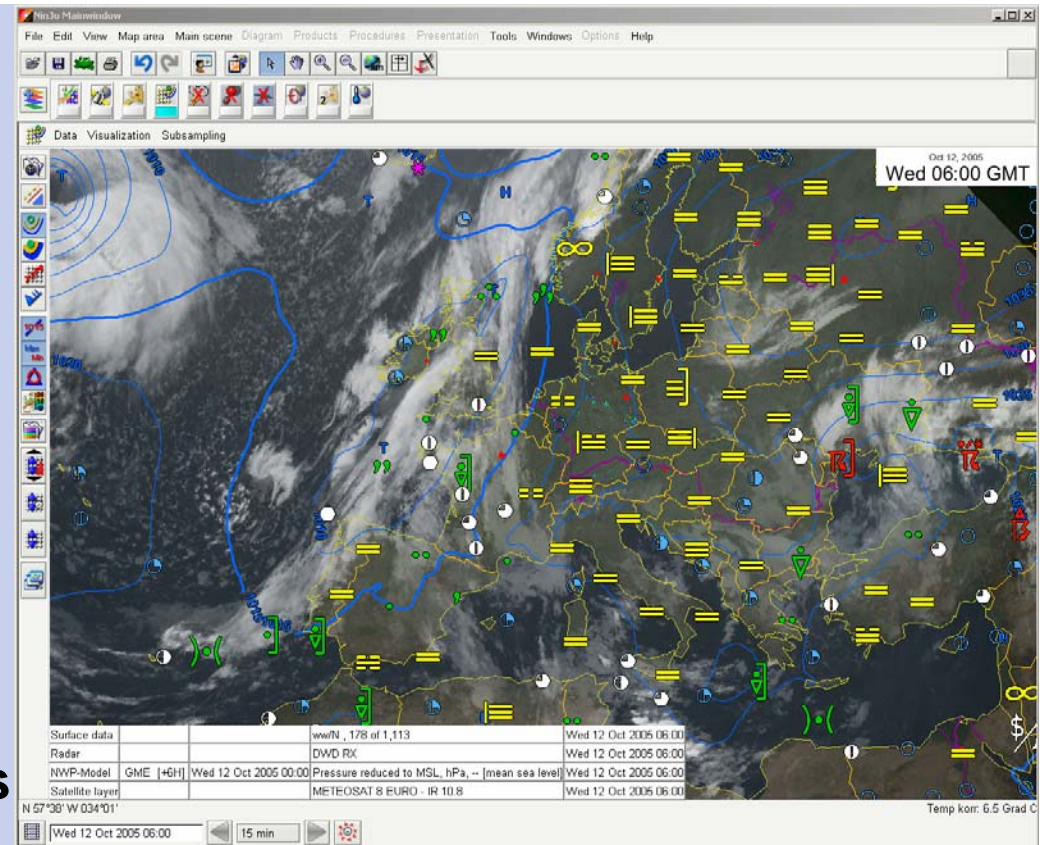
- Overview of NinJo Project
- Aviation specified Layers in NinJo:
 - Aviation Layer of NinJo
 - Aviation EPM:
Modul for Edition, Production and Monitoring of Aviation Warnings
- Conclusion



Overview of the NinJo Project

Generell Features of NinJo

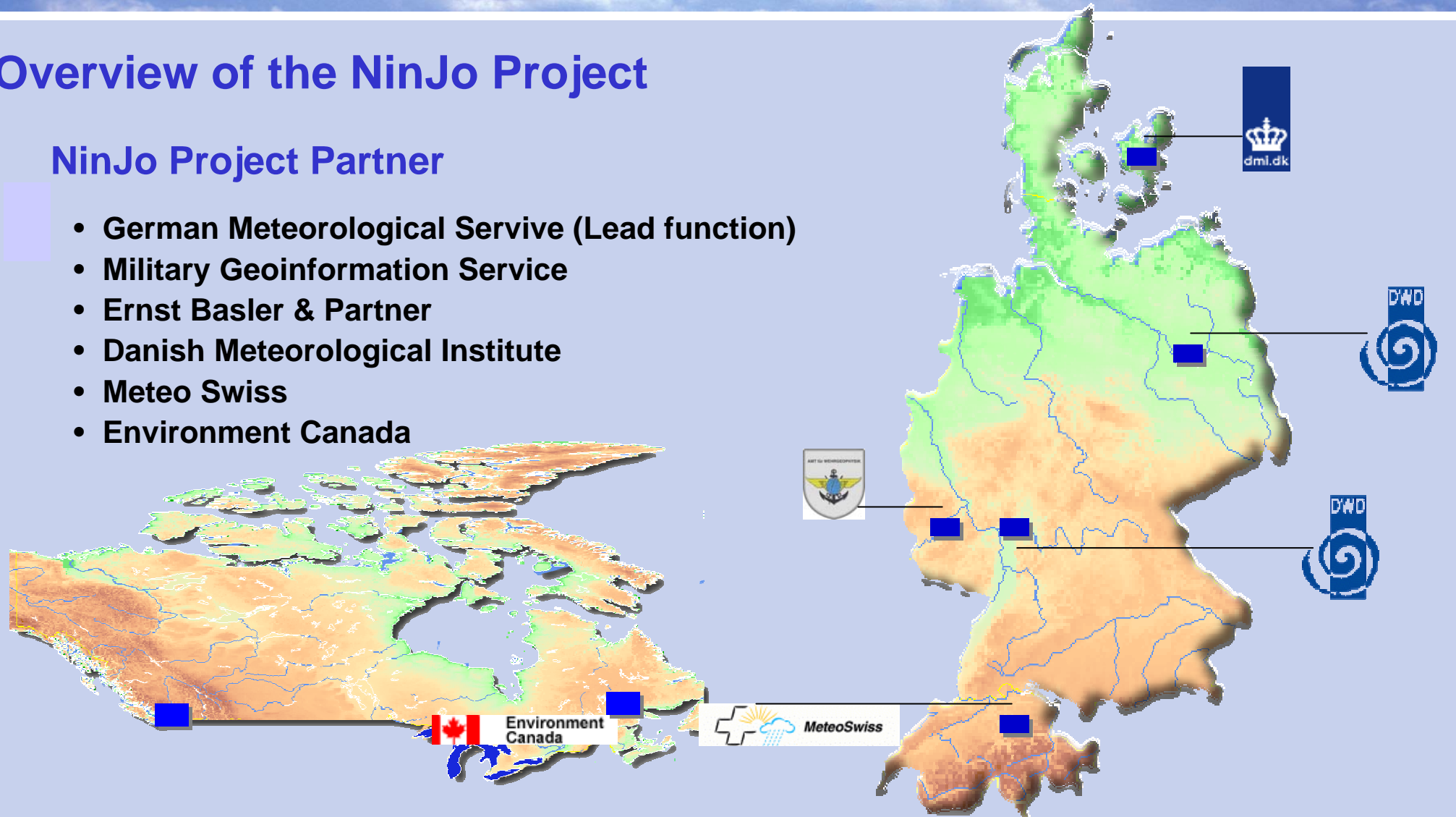
- Presentation and processing of meteorological data types
- Interactive and time steered data processing
- Map based presentation
- Diagram based presentation
- Presentation of data in different levels
- Integrated 3D visualisation
- Time steering with animation and automatic data update
- Operation logic similar to Windows



Overview of the NinJo Project

NinJo Project Partner

- German Meteorological Service (Lead function)
- Military Geoinformation Service
- Ernst Basler & Partner
- Danish Meteorological Institute
- Meteo Swiss
- Environment Canada





Overview of the NinJo Project

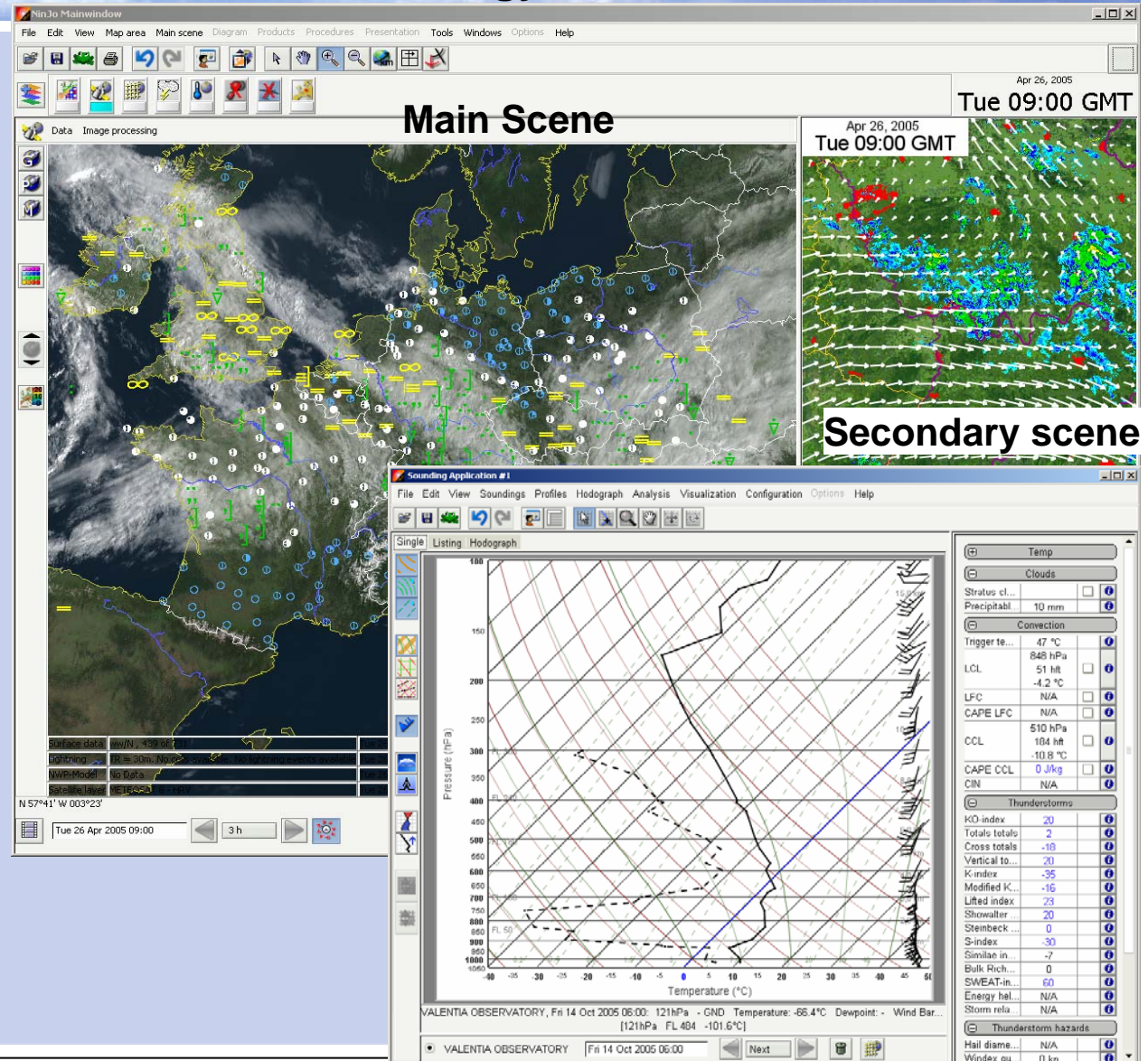
Example of a presentation

Main Scene:

- One main scene with up to 3 secondary scenes

Different secondary applications:

- Aerological diagrams
- Meteograms



Aviation Specified Layers of NinJo

Motivation / Advantages

- **Better support of the operational aeronautical meteorological service**
- **Production of aeronautical meteorological forecasts with higher quality**
- **More effectivity as well as efficiency**

Aviation Layer of NinJo

Features (I)

- **Aeronautical Meteorological Warnings:**
 - ✍ **SIGMET**
 - ✍ **AIRMET** together with **GAMET**
 - ✍ **Surface Warnings** (GAFOR-area warnings and aerodrome warnings)
- **Aeronautical Meteorological Area Forecasts:**
 - ✍ **GAFOR**
 - ✍ **AutoGAFOR**
 - ✍ **Night Vision Goggle Forecast** (presented as area forecast for GAFOR areas)

Aviation Layer of NinJo

Features (II)

- **Aeronautical Point Forecasts:**

- ✍ **TAF products:**

- TAF (together with METAR)
 - TAF Guidance
 - AutoTAF

- ✍ **TREND products:**

- TREND
 - AutoTREND

Aviation Layer of NinJo

Features (III)

- **Aeronautical Weather Reports:**

- ✍ **PIREP (Pilot Report)**

- ✍ **ARS (Air Report Special)**

- **Special Visualisation and Selection Tools:**

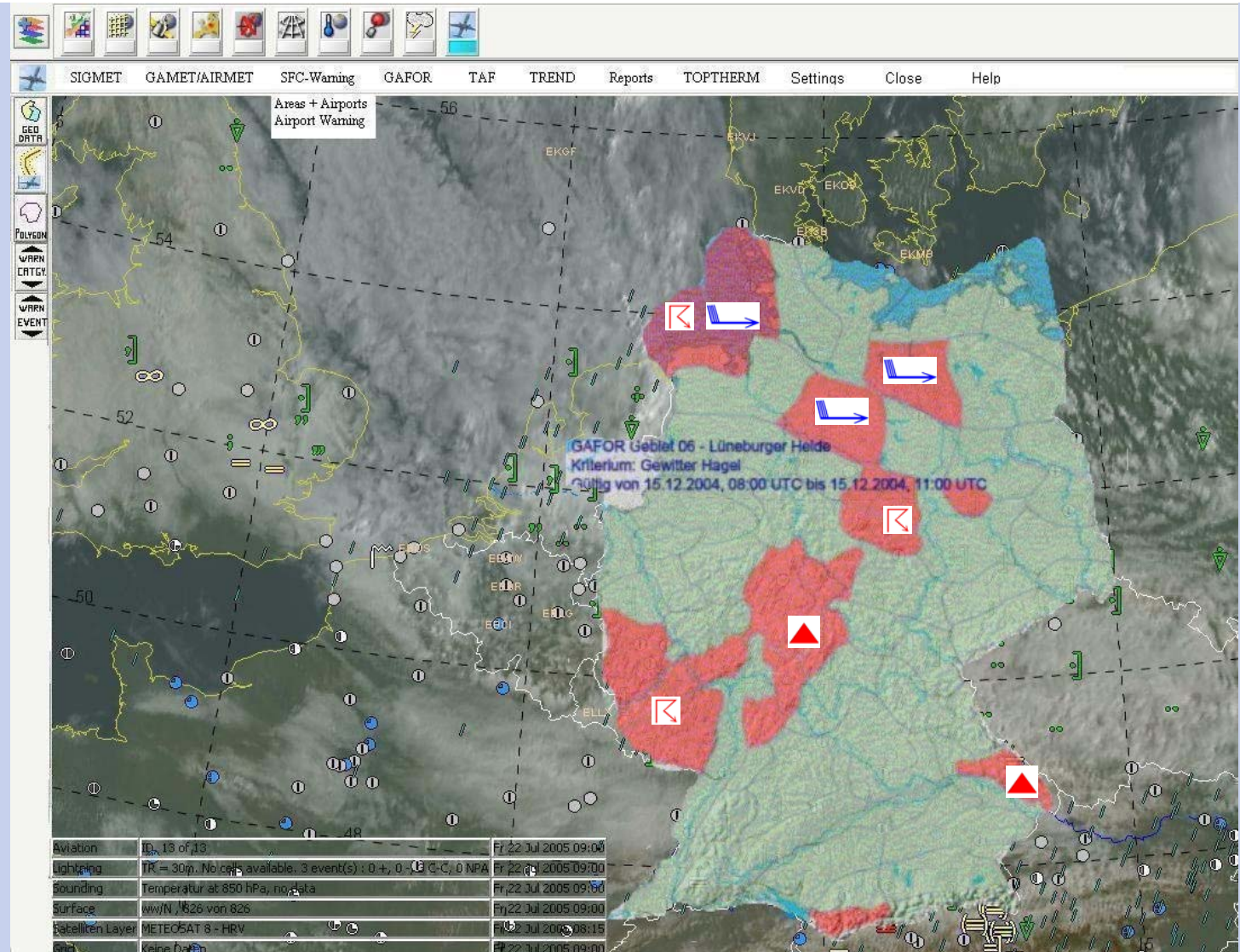
- ✍ **Polygone Line Selection**

- ✍ **Flight Route Selection**

Aeronautical Meteorological Warnings

Warned areas are
coloured red;

Warning event is
shown by the
weather symbol.

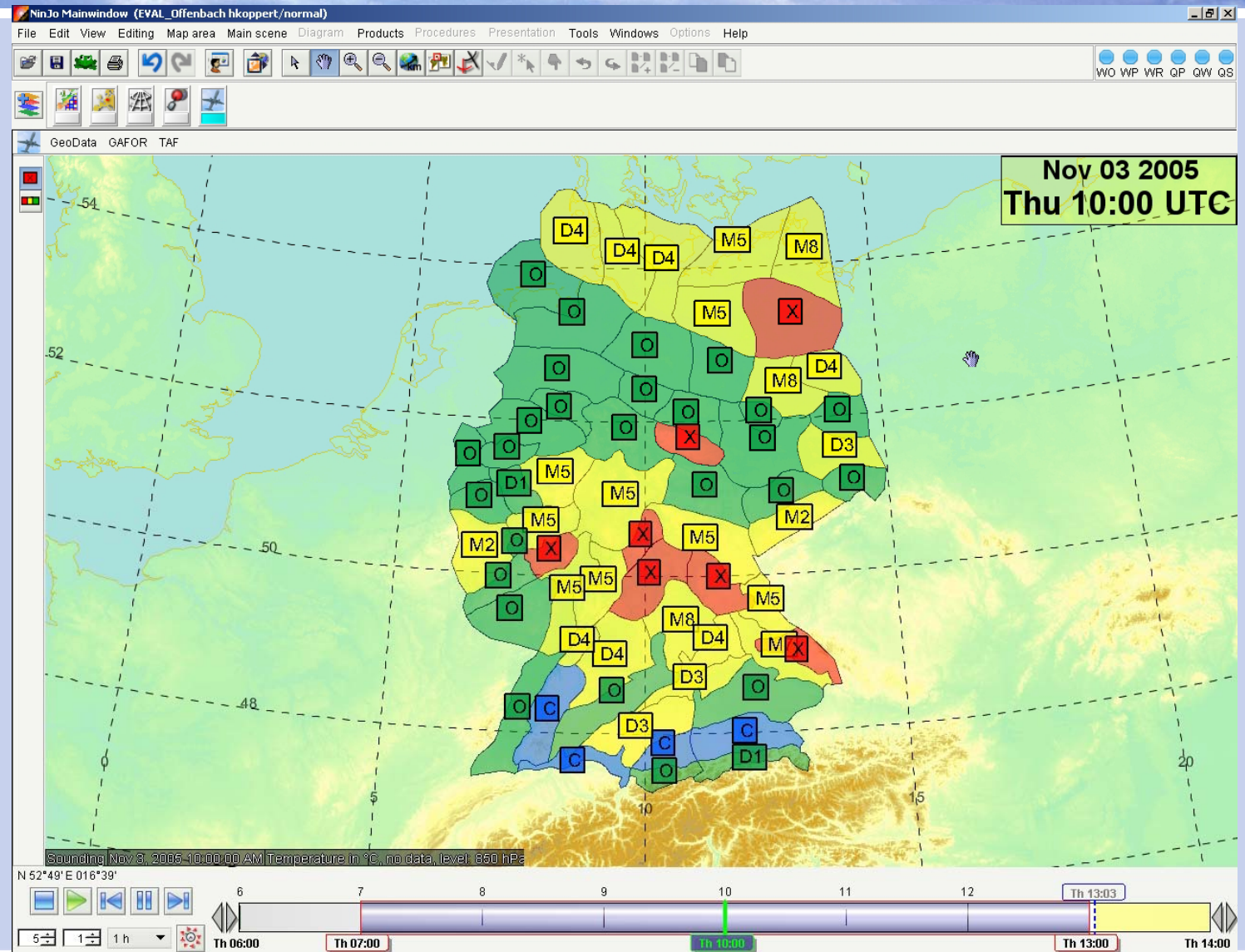




Aviation Layer of NinJo

GAFOR Germany

2-hourly forecast

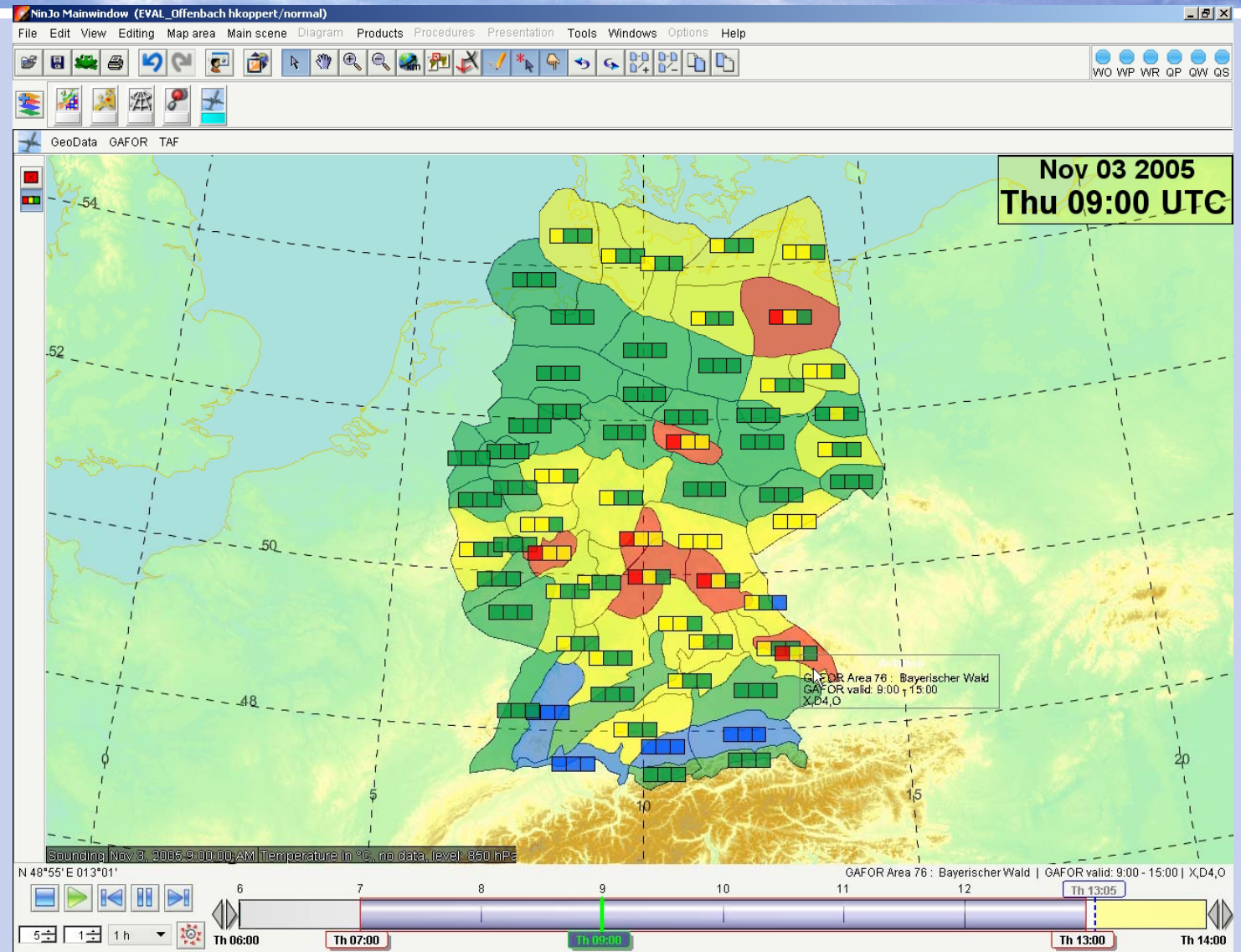


Aviation Layer of NinJo

GAFOR Germany

Boxes:
three 2-hourly
forecasts

GAFOR area:
current 2-hourly
forecast



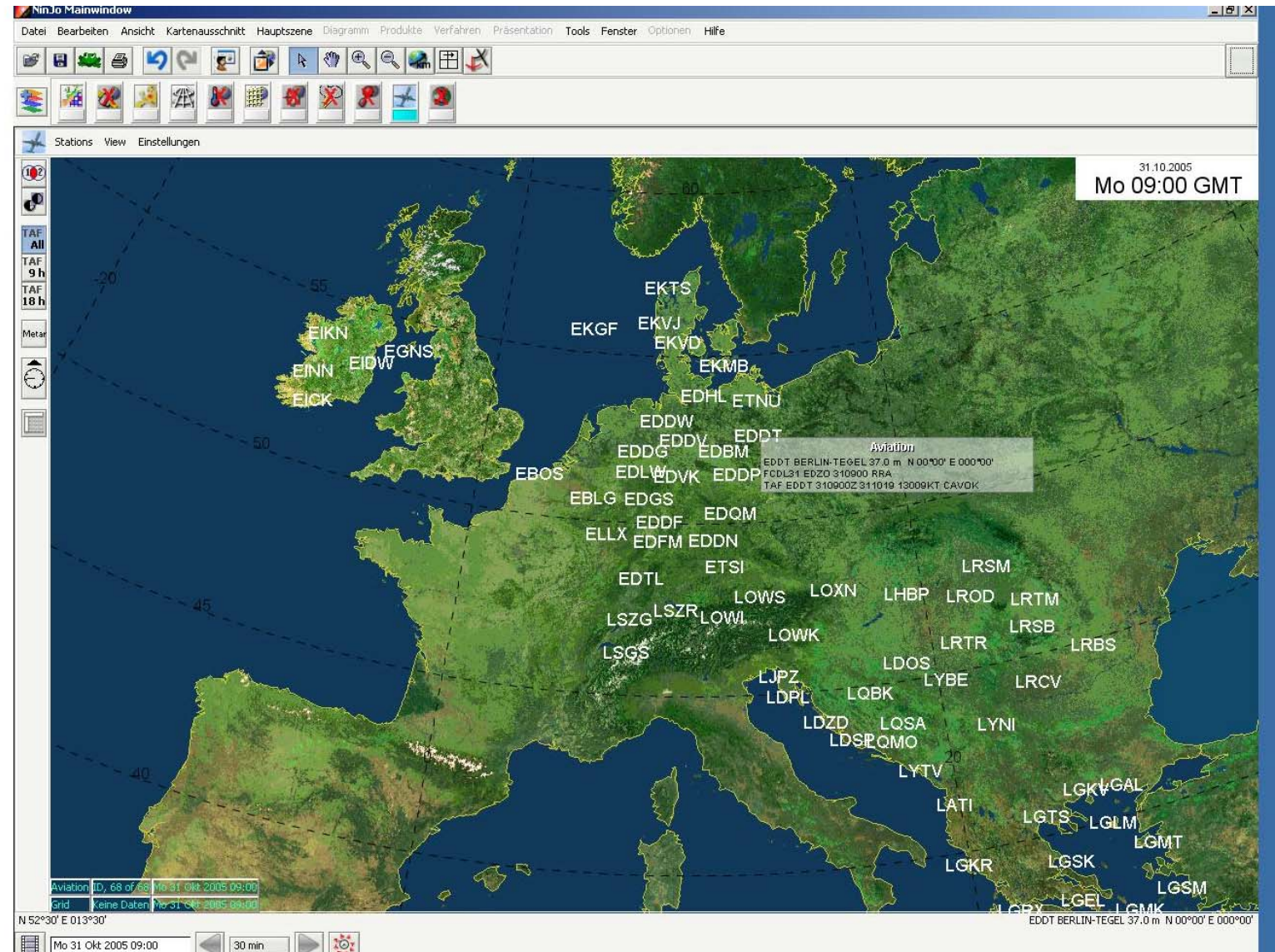
Deutscher Wetterdienst

Department of Aeronautical Meteorology



Aviation Layer of NinJo

TAF
+ METAR



Aviation Layer of NinJo

TAF uncoded presentation

Uncoded TAF presentation with WMO meteorological station circle is planned in later Aviation Layer versions:

1 hourly resolved presentation of meteorological station circle

- 1) Maximum weather conditions**
- 2) Minimum weather conditions**

at forecast time point based on all available TAF groups like prevailing, FM, BECMG, TEMPO, PROBxy



Aviation Layer of NinJo

Flight Route Selection

Example for TAF + METAR selection

Informations within the chosen air lane are selected and presented in the table

Reports List

ATD	Type	ICAO	TAF
0.1 NM	TAF Short	EBOS	030900Z 031019 19020G30KT 9999 FEW025 TEMPO 1019 19025G37KT
123.1 NM	TAF Short	EDLV	030900Z 031019 17010KT 9999 SCT030 TEMPO 1017 19015G25KT
136.5 NM	TAF Short	EDLN	030900Z 031019 18008KT 9999 SCT030 PROB30 TEMPO 1116 19015G25KT
146.6 NM	TAF Short	EDDL	030900Z 031019 18015G25KT 9999 SCT030
162.3 NM	TAF Short	EDDK	030900Z 031019 17012KT 9999 SCT030
178.0 NM	TAF Short	EDLW	030900Z 031019 20015G25KT 9999 SCT030
182.3 NM	TAF Short	EDDC	030900Z 031019 18012KT 9999 SCT030

Timeline: Th 06:00, Th 07:00, Th 09:00, Th 13:00, Th 14:00

Aviation EPM

Modul for Edition, Production and Monitoring of Aviation Warnings

Tasks:

1. Edition

- Selection of warning category,
- Selection of area or aerodrome,
- Edition of warning text

2. Production

- Production of the warning

3. Monitoring

- Suitable presentation of the warnings

Aviation EPM

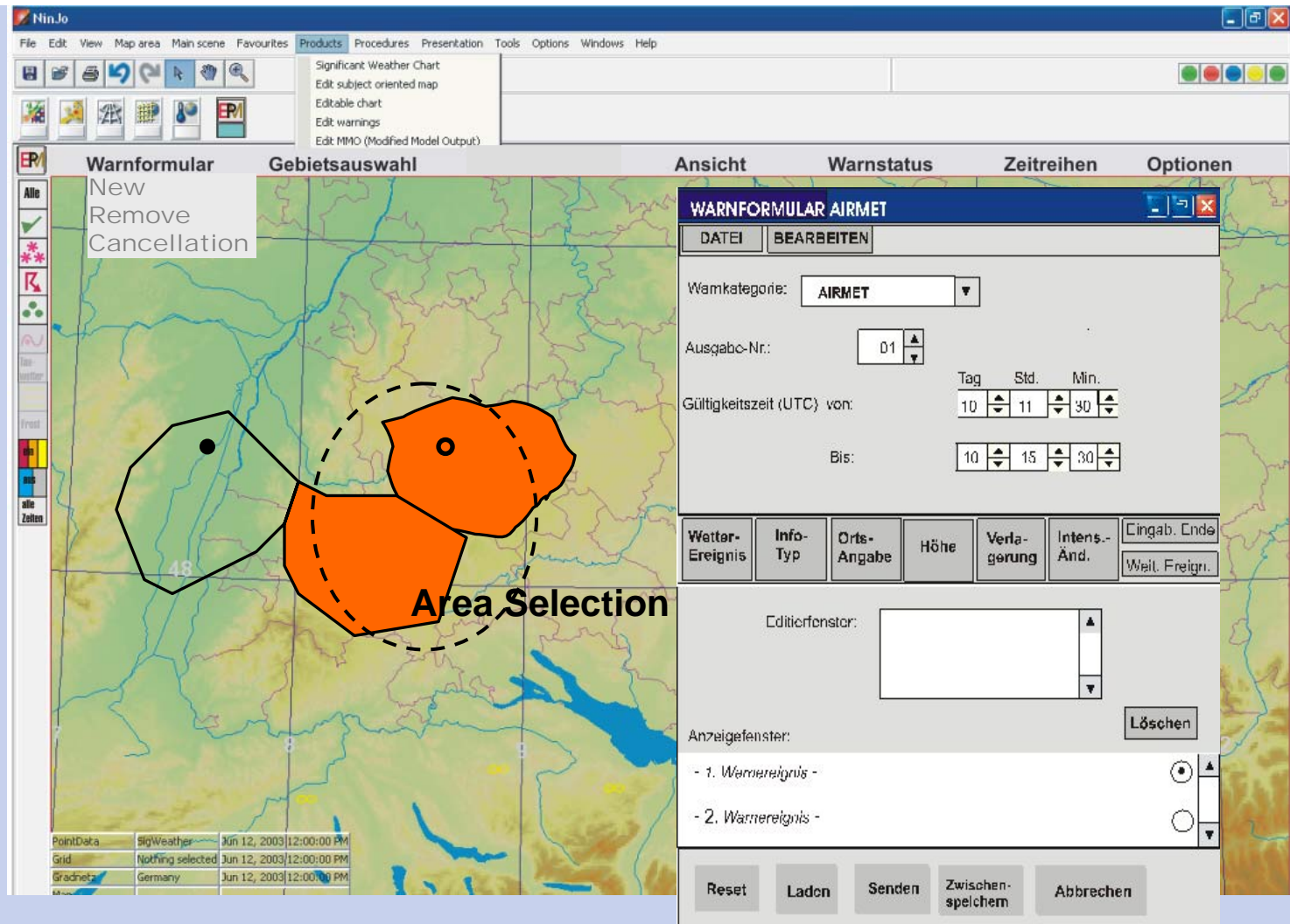
Edition

Area selection:

- Mouse click on area
- Polygone line method
- Alphanumerical

Warning text modules are offered by pulldown menus

Warning text specifications are conform with ICAO ANNEX 3



Aviation EPM

Warning Categories and Areas

Category:	Area:	Type:
SIGMET	UIR / FIR	(ICAO ANNEX 3)
AIRMET	FIR	(ICAO ANNEX 3)
Aeorodrome Warning	International Aerodromes	(ICAO ANNEX 3)
Wind Shear Warning	International Aerodromes	(ICAO ANNEX 3)
GAFOR-Area Warning	GAFOR-Areas	(DWD Warning)

Aviation EPM

Monitoring

Warning status is available

- for every warning category and warning event
- for all warning areas and aerodromes

Warning status is shown as

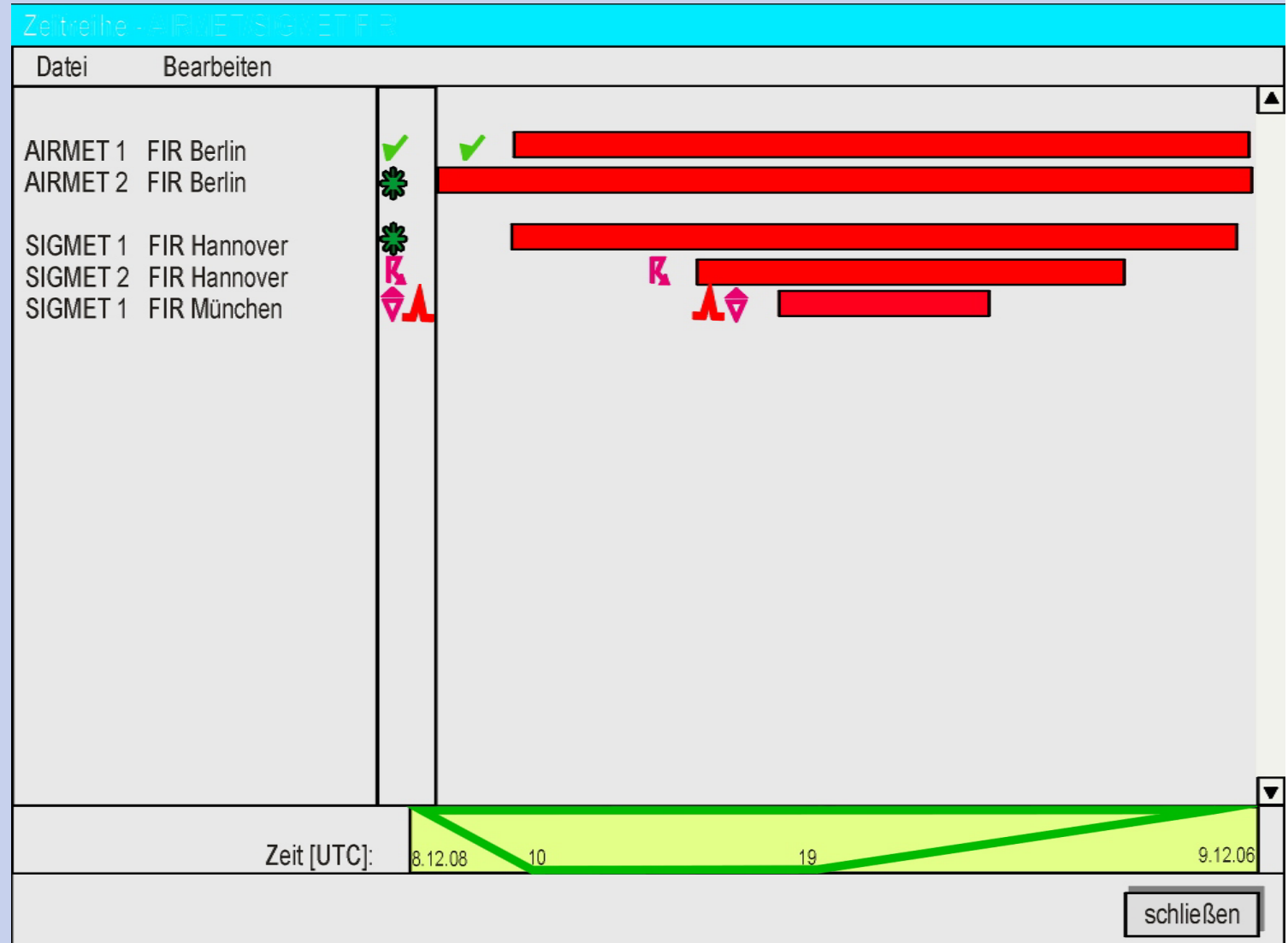
- spacial (in map coloured areas and aerodromes)
- as time series (time series in a dialog window)



Aviation EPM

Monitoring

Example for
time series
presentation



Conclusion

- **NinJo is worldwide one of the most advanced systems for working with meteorological data types**
- **Improved support to the weather forecast -
Aviation specified layers: particularly with regard to the
aeronautical service**
- **Improved quality of aviation forecast products are expected with
NinJo**