

Software solutions for the exchange of large environmental data sets

Keith Haines

Jon Blower

Chunlei Liu

Adit Santokhee

Environmental Systems Science Centre (ESSC)

Reading University

Introduction

- NERC e-Science project GODIVA
Grid for Ocean Diagnostics, Interactive Visualisation and Analysis
⇒ Remote/distributed visualisation and analysis of large data sets
⇒ Web portal www.nerc-essc.ac.uk/godiva
- Web and Grid Services: evolving standards
- Make agency marine model data available to research community, MERSEA, GODAE, CASIX
- Example Approaches to remote data analysis/applications
- Some challenges for data access

ESSC Godiva Data Access Server - Microsoft Internet Explorer

File Edit View Favorites Tools Help

Back Forward Stop Home Search Favorites History Print Refresh Stop

Address <http://www.nerc-essc.ac.uk/godiva/> Go

Y! Customise type search here Search Highlight Y! Bookmarks My Yahoo! >>

User's Guide

sea_water_potential_temperature

Met Office (FOAM global model)

- [u-component of](#)
- [North A v-component of](#)
- [Met Off Mediter Temperature](#)
- [Sea surface ele](#)
- [Salinity](#)
- [Met Office \(9th Stream function](#)
- [Mixed layer dep](#)
- [ECMWF data Mixed layer dep](#)
- [Meridional mom](#)
- [Zonal momentu](#)
- [OCCAM Timese Total net heat fl](#)
- [Precipitation rat](#)
- [OCCAM 12TH](#)
- [HADCM3](#)

Select view

[Disable map applet](#)

- wt volume
- yt(lat/time) slice
- zt(depth/time) slice
- x line
- y line
- z line
- t line
- xyz volume
- xyt volume**
- xzt volume
- yzt volume
- xyzt volume

Get Data

Zoom Out

<--- --->

Zoom In

48
-82
-61

21

Select depth

Select time

Select time

Select product

>1.5Tb data

This GODIVA Project Server is maintained at the Environmental Systems Science Centre of the University of Reading. For comments or information, please contact us via [email](#)

Applet fancyText started Local intranet






ESSC Godiva Data Access Server - Microsoft Internet Explorer

File Edit View Favorites Tools Help

Back Forward Stop Home Search Favorites History Print Copy Paste Refresh

Address http://www.nerc-essc.ac.uk/~c11/godiva_tmp/logs/ Go

Y! Customise type search here Search Highlight

  NATURAL ENVIRONMENT RESEARCH COUNCIL  Met Office  European Centre for Medium-Range Weather Forecasts  GODIVA

GODIVA Portal

[Institutes \(2004\)](#)

[Countries \(2004\)](#)

[Institutes \(last 6 months\)](#)

[Countries \(last 6 months\)](#)

[Total \(all\)](#)

Countries

UK	536
USA	172
France	47
China	36
Singapore	34
Netherland	29
Italy	14
Japan	10
Canada	10
Peru	9
Australia	9
Unknown	6

6 month data access

Done Local intranet

Godiva data and visualisation portal

- Two alternative routes to data

OPenDAP: URL based

eg. [www.nerc-essc.ac.uk:9090/dodsC/FOAM_NATL_MEANSSH?ssh\[0:1:0\]\[0:1:200\]\[0:1:100\]](http://www.nerc-essc.ac.uk:9090/dodsC/FOAM_NATL_MEANSSH?ssh[0:1:0][0:1:200][0:1:100])

GADS: Grid Access Data Service: SOAP XML based Web Service (Woolf et al; 2003)

Reads/Writes GRIB, NetCDF, HDF4/5.....

Flexibility: Security, extended querying, Workflows and Grid Services

Recent work experimenting with databases (Santokhee et al 2004)

- Portal similar to Live Access Server: PCMDI

Security layer

Make client specified movie loops online

Other GODIVA groups interested in more advanced remote visualisation



ESSC Godiva Data Access Server - Microsoft Internet Explorer

Address: <http://www.nerc-essc.ac.uk/godiva/>

sea_water_potential_temperature

Select view: volume, slice, line, volume

Select depth: 5

Select time: 1 Sep 2004

Select time: 26 Oct 2004

Select product: Movie (GIF)

Get Data

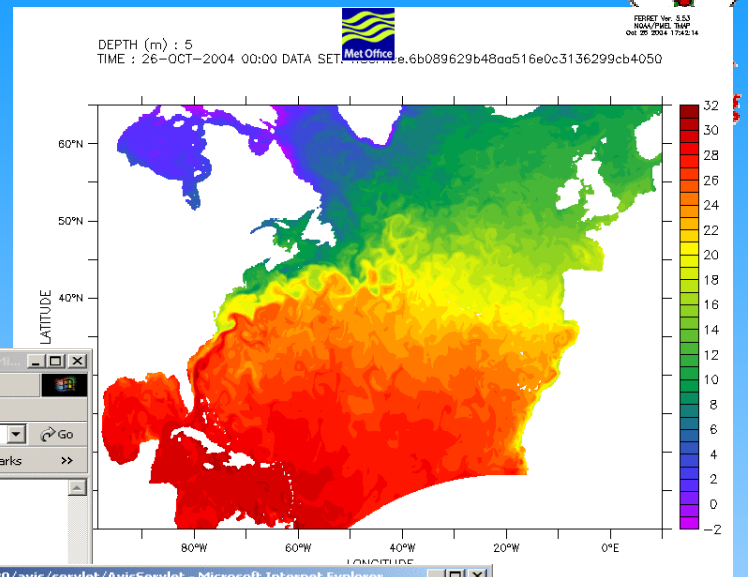
Zoom Out

Zoom In

Reading e-Science Centre

www.resc.rdg.ac.uk

resc@rdg.ac.uk



Processing input parameters ...

Data extraction starting... (4.39 MBytes data will be extracted from 25 files)

Data extraction finished

Checking how many machines are available for rendering... 8 machines are available.

Extracting colour range for images ...

Starting distributed rendering ...

Check how many frames of the movie are finished:

15 of 25 are finished

[Online Movies](#)

http://lovejoy.nerc-essc.ac.uk:8080/axis/servlet/AxisServlet - Microsoft Internet Explorer

Address: <http://lovejoy.nerc-essc.ac.uk:8080/axis/servlet/AxisServlet>

- ### ESSC Web Services
- GADS ([wsdl](#))
 - getInfo
 - dataQuery
 - dataRequest
 - dataRequestNatural
 - ExtractData ([wsdl](#))
 - extractData
 - AdminService ([wsdl](#))
 - AdminService
 - Version ([wsdl](#))
 - getVersion
 - RemoveSeasonalCycle ([wsdl](#))
 - removeSeasonalCycle
 - Detrend ([wsdl](#))
 - detrend
 - CalcCorrelation ([wsdl](#))
 - calcCorrelation

THREDDSS Catalog - Microsoft Internet Explorer

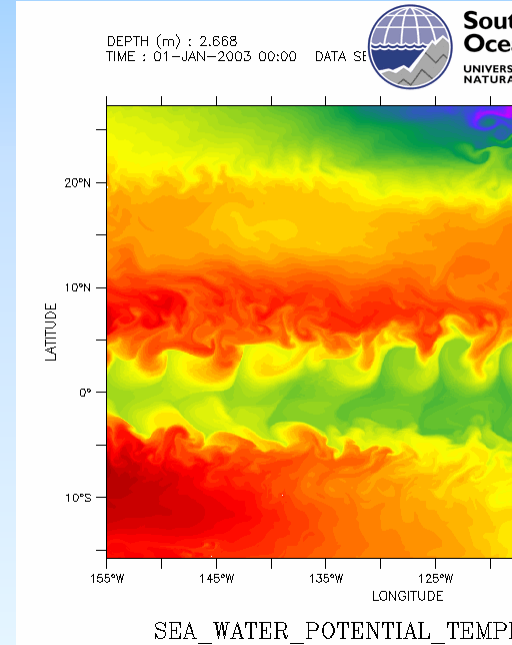
Address: <http://www.nerc-essc.ac.uk:9090/dods/C/>

THREDDSS Catalog for:

ESSC FOAM MERSEA OPenDAP Aggregation Server

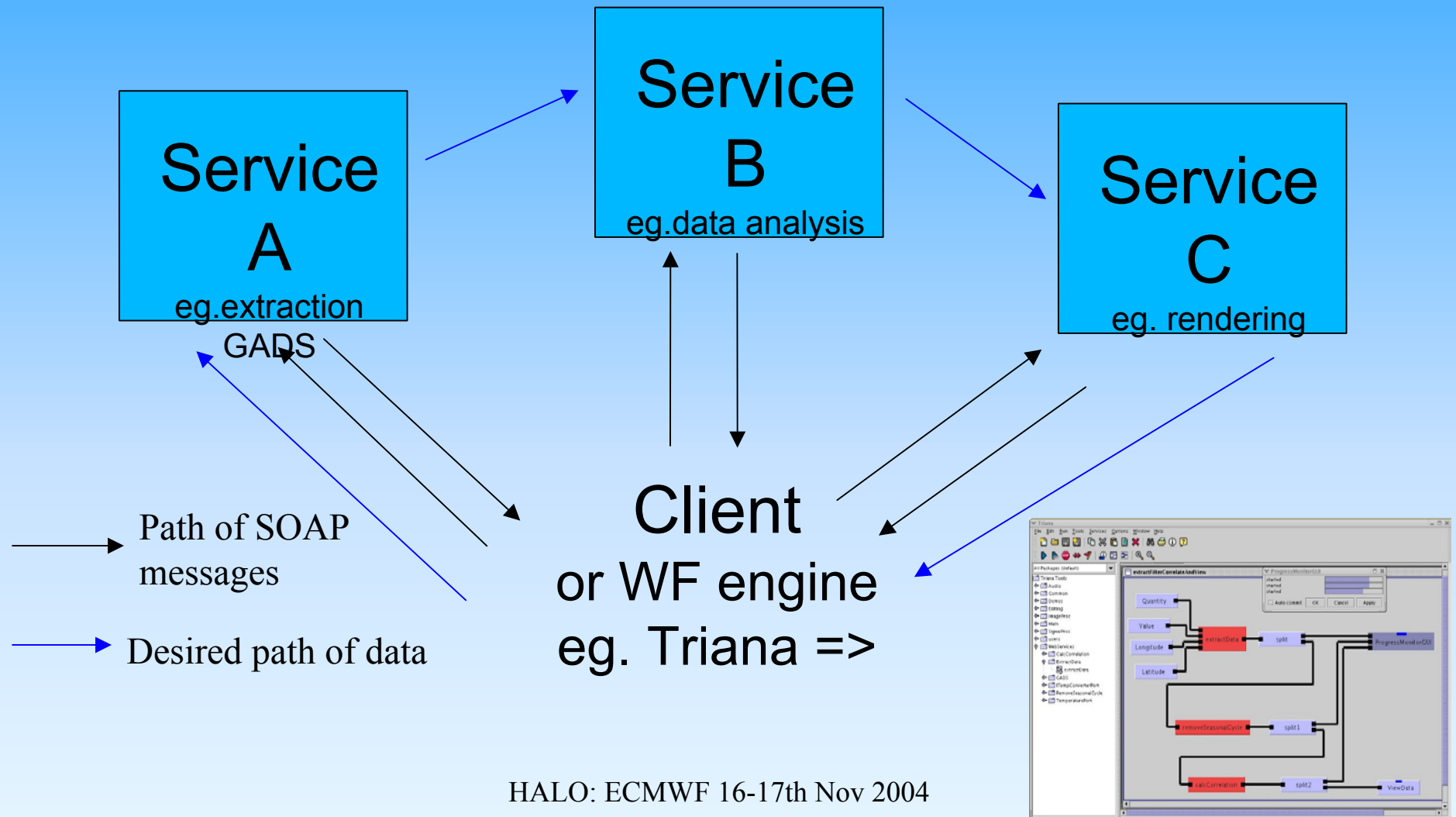
Dataset:

- CLASS 1:**
 - Mediterranean Sea (MED):**
 - MSSH: [DDS DAS Information Data Request Form](#)
 - Best Estimates: [DDS DAS Information Data Request Form](#)
 - Today's Best Estimates: [DDS DAS Information Data Request Form](#)
 - Forecasts (+120 h): [DDS DAS Information Data Request Form](#)
 - Today's Forecast (+120h): [DDS DAS Information Data Request Form](#)
 - North Atlantic Ocean (NAT):**
 - MSSH: [DDS DAS Information Data Request Form](#)
 - Best Estimates: [DDS DAS Information Data Request Form](#)
 - Today's Best Estimates: [DDS DAS Information Data Request Form](#)
 - Forecasts (+120 h): [DDS DAS Information Data Request Form](#)
 - Today's Forecast (+120h): [DDS DAS Information Data Request Form](#)
- CLASS 2:**
 - Mediterranean Sea Sections:**
 - Best Estimates (Section 1): [DDS DAS Information Data Request Form](#)
 - Best Estimates (Section 2): [DDS DAS Information Data Request Form](#)
 - Best Estimates (Section 3): [DDS DAS Information Data Request Form](#)



): ECMWF 16-17th Nov 2004

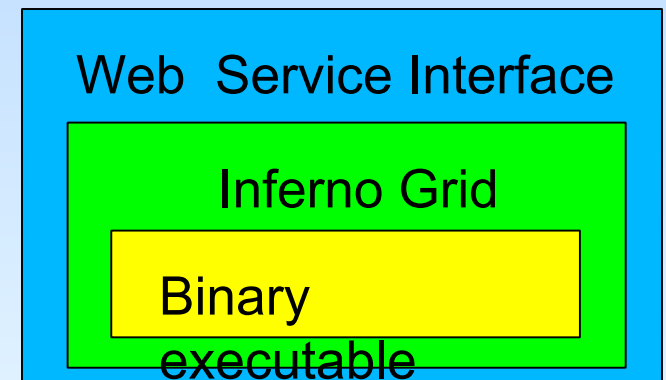
Workflow and Data processing



Data streaming

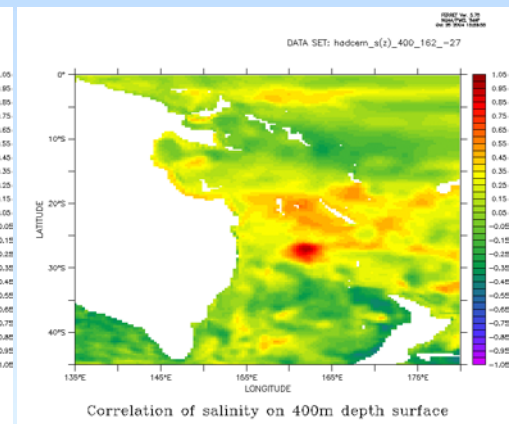
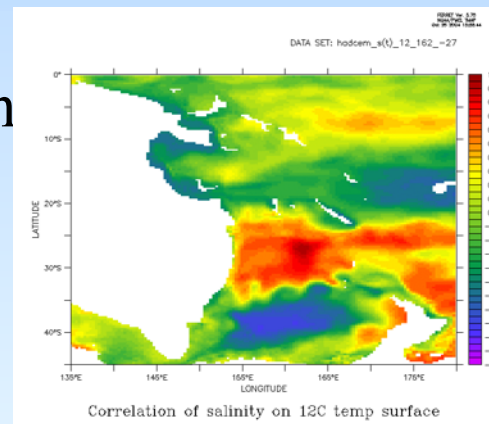
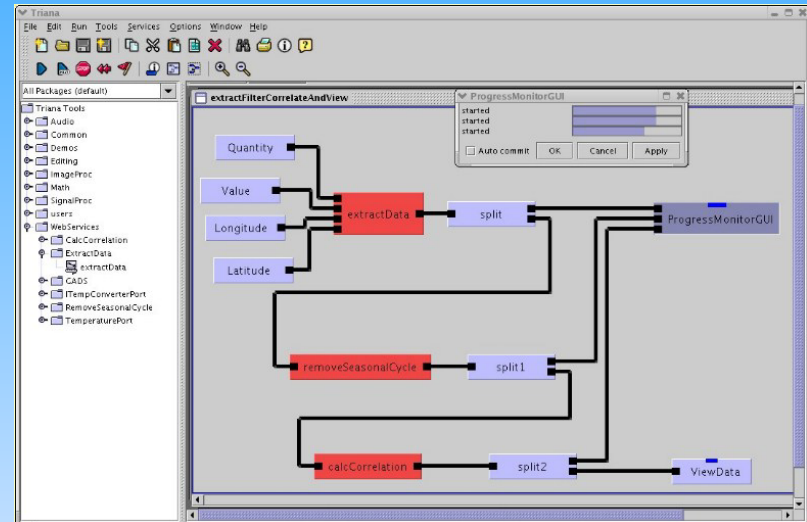
- If all services in the workflow were running as Unix filters on the same machine, we could write something like:
 - **extract | process | render**
- We want to pipe the data across a network in the same way
 - Split and combine parallel processing paths
 - Plus we'd like to be able to monitor progress for long running jobs
- Wrap binary executables with little or no modification
- Used lightweight Inferno software designed for distributed computing
- Inferno is Open Source for non-commercial use
- Details in Blower et al. (2004)

www.resc.rdg.ac.uk/publications/Blower_AHM_2004.pdf



Example workflow: Model covariances

- Data assimilation involves using covariances to determine data influence
- Calculating covariance scales from model results computationally intensive
- Workflow compares ocean salinity covariances from coupled HadCEM model on z level and temperature surfaces

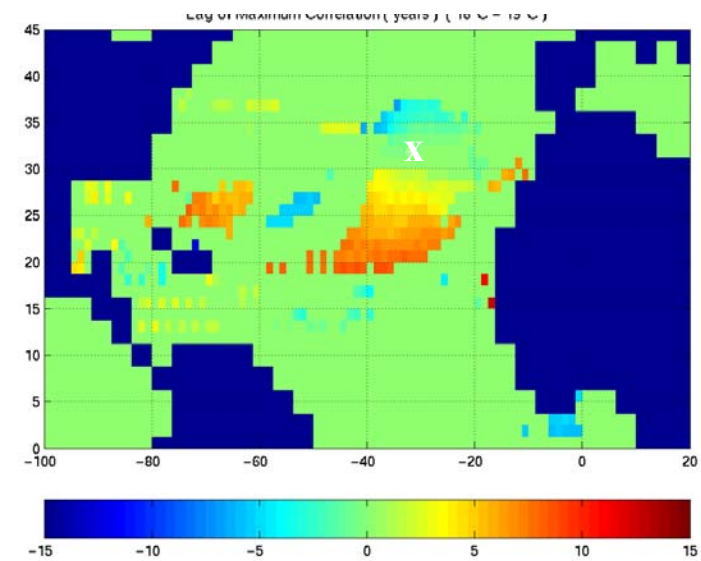
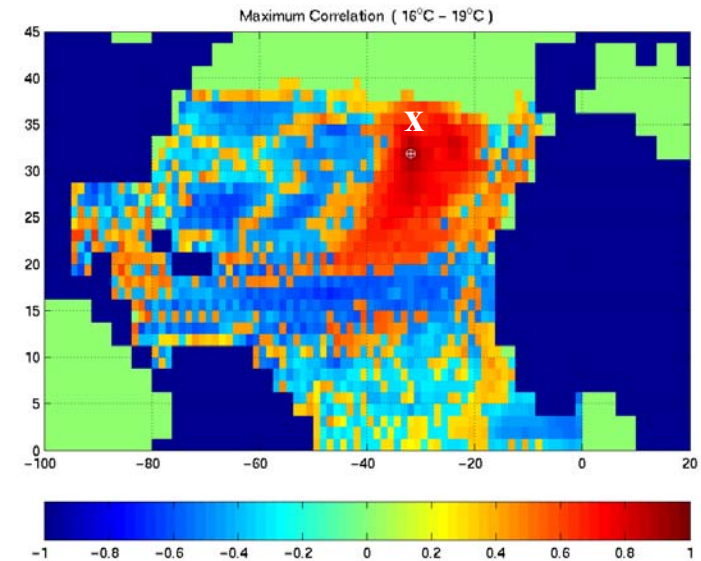


Time-lagged covariances

(a) One point correlation map of 16-19C thickness below the winter mixed layer base. Maximum correlations shown for any lead-lag

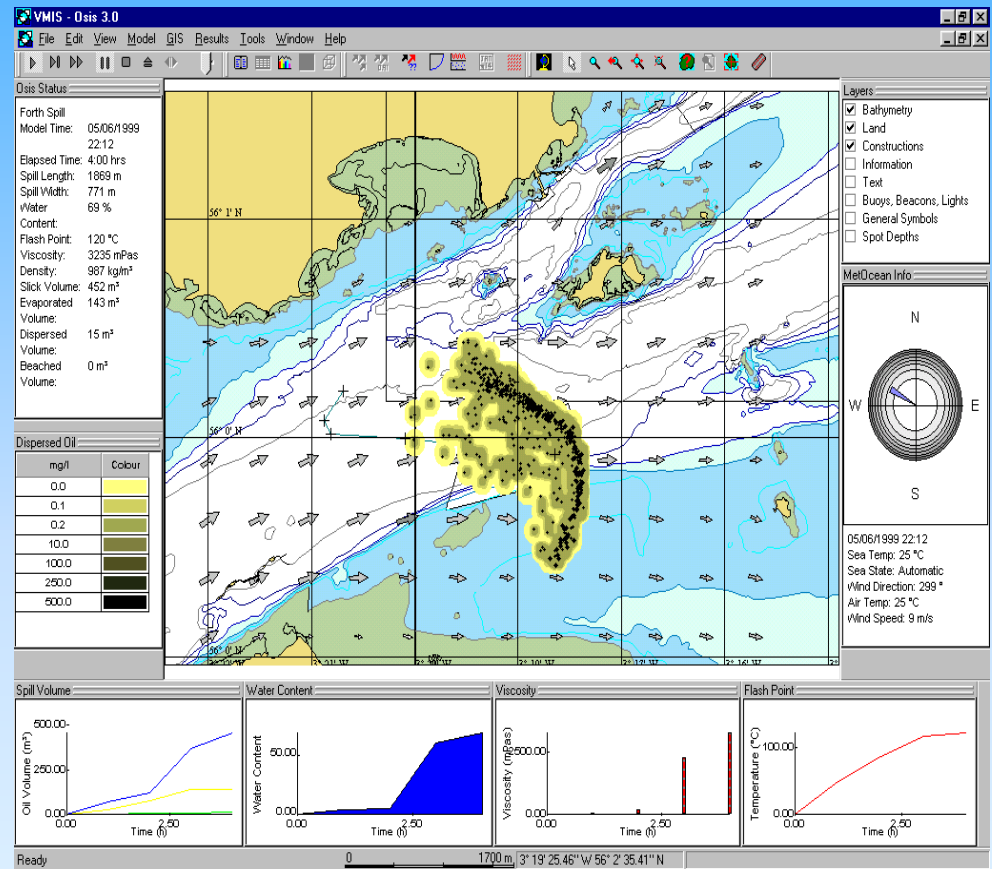
(b) Lead-lag of optimum thickness correlations

Need a front end toolbox with Web Service capabilities, possibly based on CDAT/Python. Future development plan



SARIS Example

- BMTs Search and Rescue at SEA (SARIS) tool has been modified to initiate GADS Web Service
- Real-time Met Office current data can be read from internet when system is run
- Potential implementation for UK CoastGuard

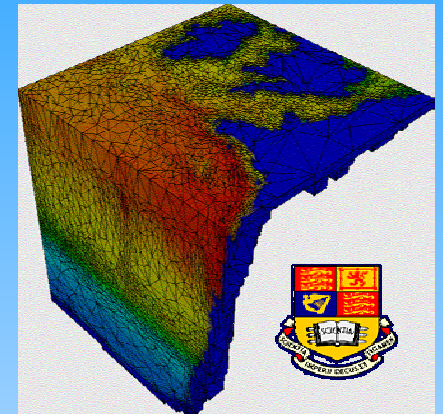


HAEC, ECMWF 16-17th Nov 2004

Oil Spill OSIS system

Data access wish list

- Hold data on native spatial grids
 - eg. model data on distorted grids
 - future modelling on unstructured meshes
- Interpolation tools => Client specified access resolution/format
- Compatibility with GIS (3/4D data)
- Query data by value
 - eg. give me all the data with $T > 20C$
 - research and policy issues
 - database functionality





Reading e-Science Centre

Environmental e-Science Applications



www.resc.reading.ac.uk



Technical Director
Jon Blower
ESSC



Director
Keith Haines
ESSC



Director
Rachel Harrison
CS

External Collaborations



European Centre
for Medium-Range
Weather Forecasts



ENVIRONMENT
AGENCY



Reading University's
Environmental Systems
Science Centre **ESSC**



Meteorology Dept.
Centre Global Atm. Mod.
Data Assim. Res. Centre
Met Office/Hadley Units
Plant Sciences Dept.

**Associated Personnel: Kevin Hodges, Chunlei Liu,
Adit Santokhee, Kecheng Liu, Steve Gough,**

Future Directions for ReSC

- Toolbox front end with Web Services + data streaming for climate data analysis
- Spatial database technology for storing model output

HALO: ECMWF 16-17th Nov 2004