



*Norwegian  
Meteorological Institute  
met.no*

## Operational visualisation systems at met.no

Audun Christoffersen and Eivind Martinsen

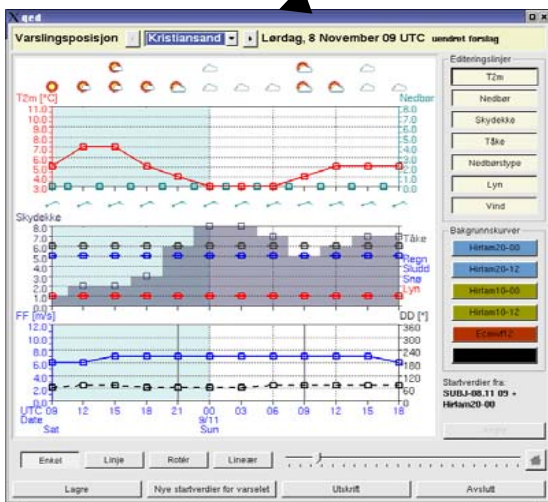
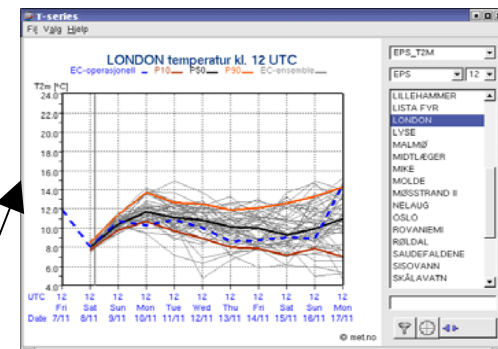
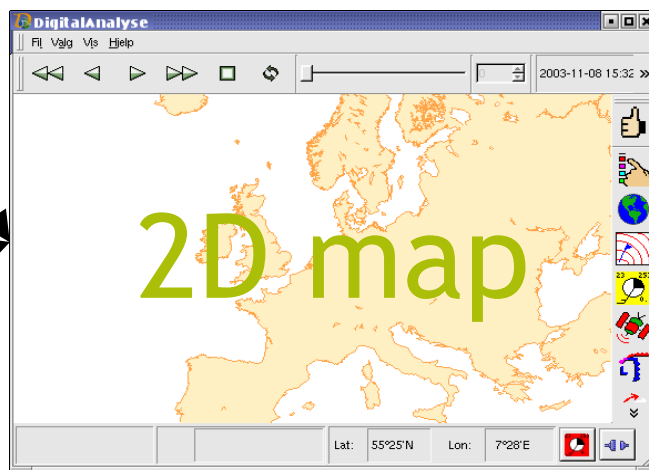
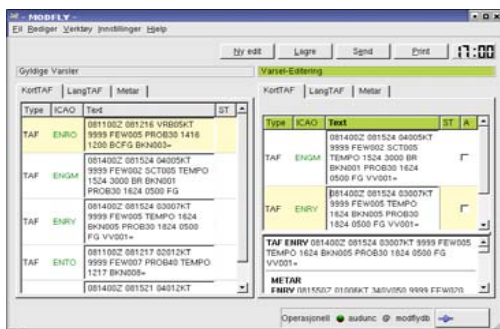


# Overview

- Development of visualisation systems at met.no
- DIANA
  - Production tools
  - Uses in connection with other data views



# Visualisation model



Varslingsposisjon Kristiansand

Verifikasjon

Stasjonsnavn: Oslo. Tid: 31/10-2003, kl.12:00.

	DD	FF	TT	DIAS	RMS	MAE
Observasjon	220	1.00	20.6			
Subjektiv kl.12+24	240	3.0	20.6	2.0	7.5	2.7
Hirtam20 kl.00+36	248	2.9	21.0	2.2	7.7	2.6
Hirtam10 kl.00+36	240	3.2	20.7	1.6	7.2	2.4





# Technical Standards

- Linux (Irix)
- C/C++
- Mesa (Open GL)
- Qt
- Freeware components

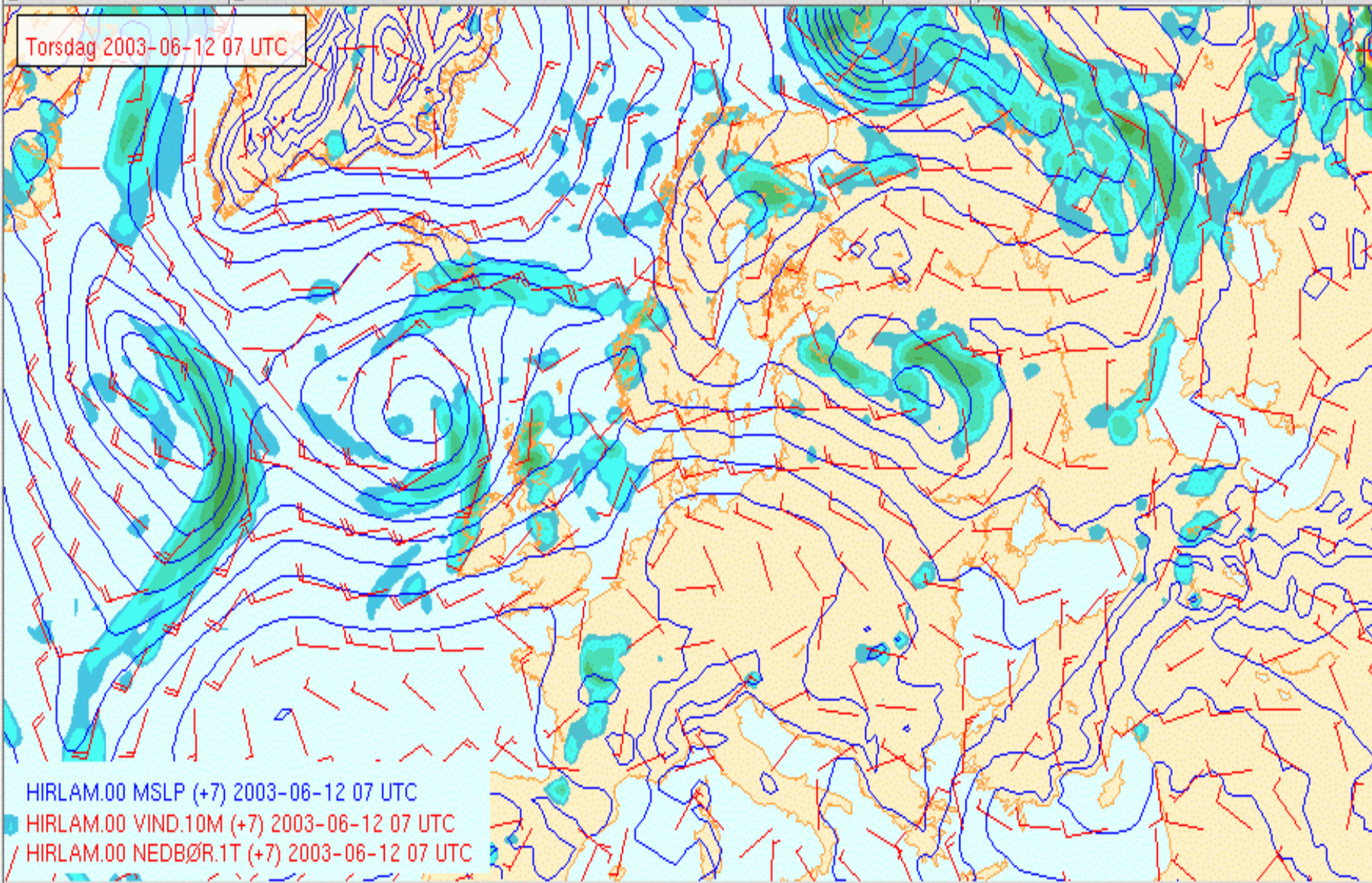


# DIANA (Digital ANALysis)

## Visualisation

- Fields
- Satellite and radar images
- Surface observations
- Soundings
- Cross Sections
- Forecast products

Torsdag 2003-06-12 07 UTC



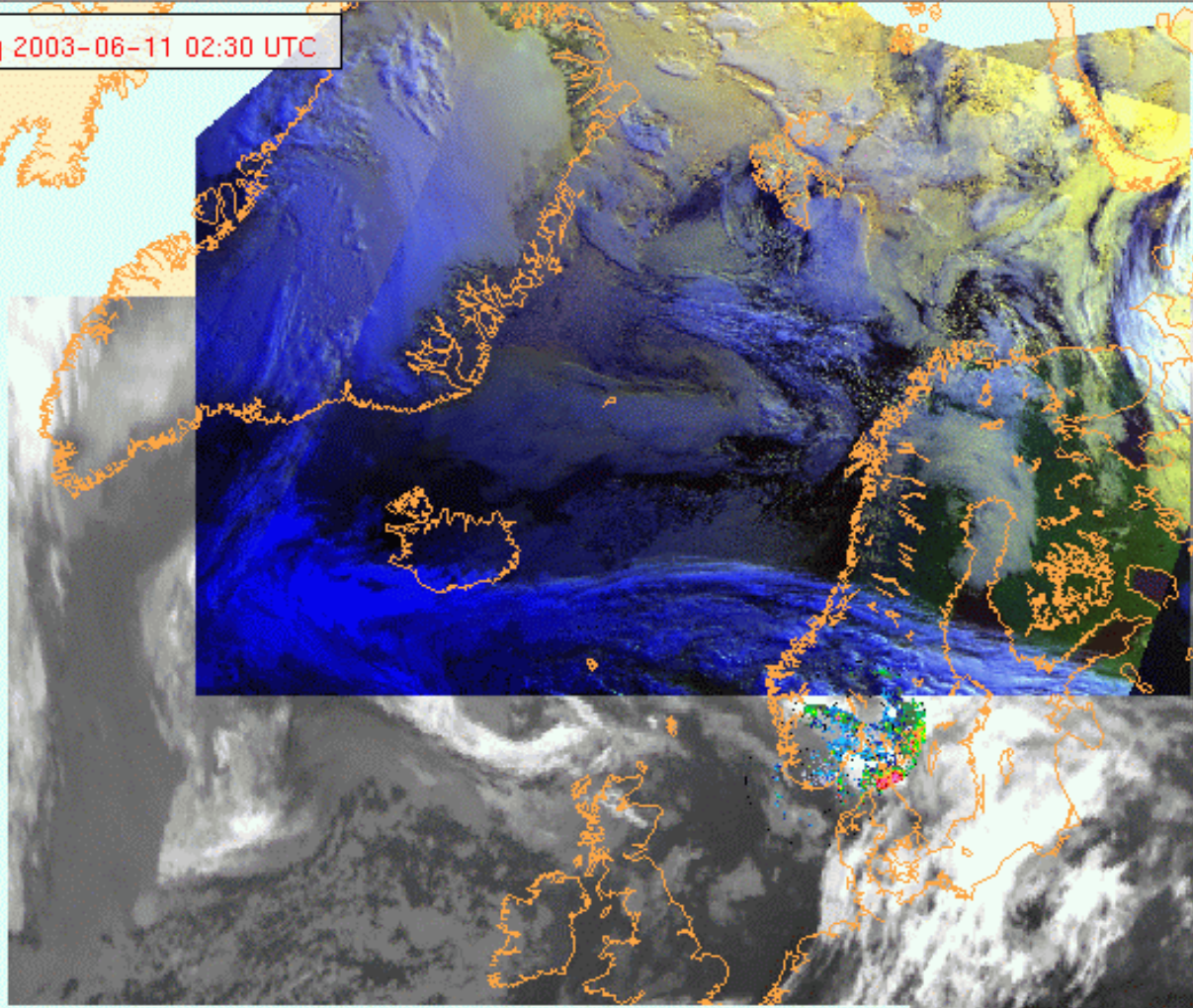
HIRLAM.00 MSLP (+7) 2003-06-12 07 UTC  
 HIRLAM.00 VIND.10M (+7) 2003-06-12 07 UTC  
 HIRLAM.00 NEDBØR.1T (+7) 2003-06-12 07 UTC

Vertical toolbar with icons for:  
 - Home  
 - Layer selection  
 - Map style (globe)  
 - Projection (cylinder)  
 - Scale (23, 253, 0)  
 - Satellite view  
 - 3D view  
 - Animation  
 - Full screen  
 - Information

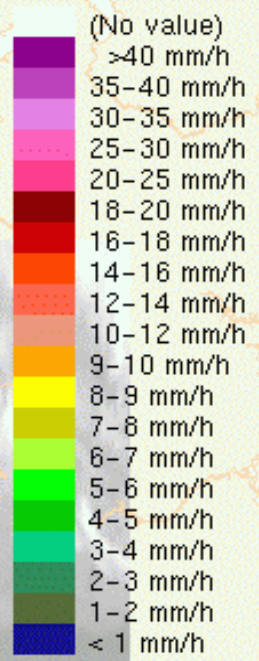
Four small map style icons in a row.

Navigation controls including back, forward, and zoom buttons, a zoom slider set to 0, and a timestamp: 2003-06-11 02:30:00.

Onsdag 2003-06-11 02:30 UTC



CORRECTED PRECIP.::

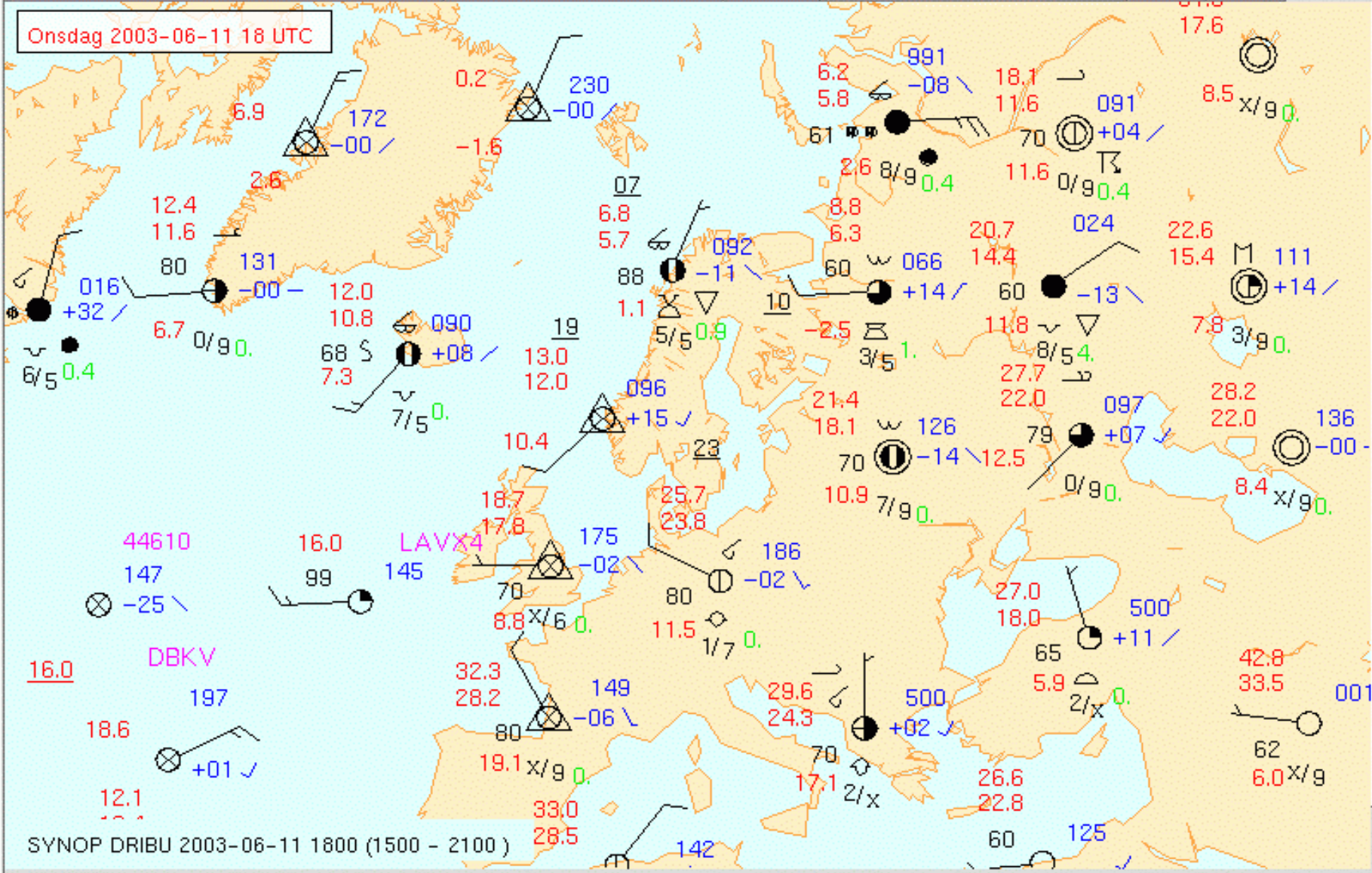


A vertical toolbar containing various interactive icons: a thumbs up, a hand pointing to a color bar, a globe, a radar icon, a weather icon with '23' and '253', a satellite dish, a wind icon, a hot air balloon, a target icon, an information icon, and a pencil.

METEOSAT7 IR IR+V 2003-06-11 02:30:00  
 NOAA-16 MOSAIKK Ishavet day\_night 2003-06-11 03:17:00 (0136 - 0818)  
 WR\_NO\_ALL met.no-composite PSC\_RI 2003-06-11 02:30:00



Onsdag 2003-06-11 18 UTC



Vertical toolbar with various icons for map interaction:

- Thumbs up icon
- Hand cursor icon
- Globe icon
- Map grid icon
- Weather icon (sun/moon)
- Wind icon
- Cloud icon
- Hot air balloon icon
- Target icon
- Information icon (i)
- Eraser icon





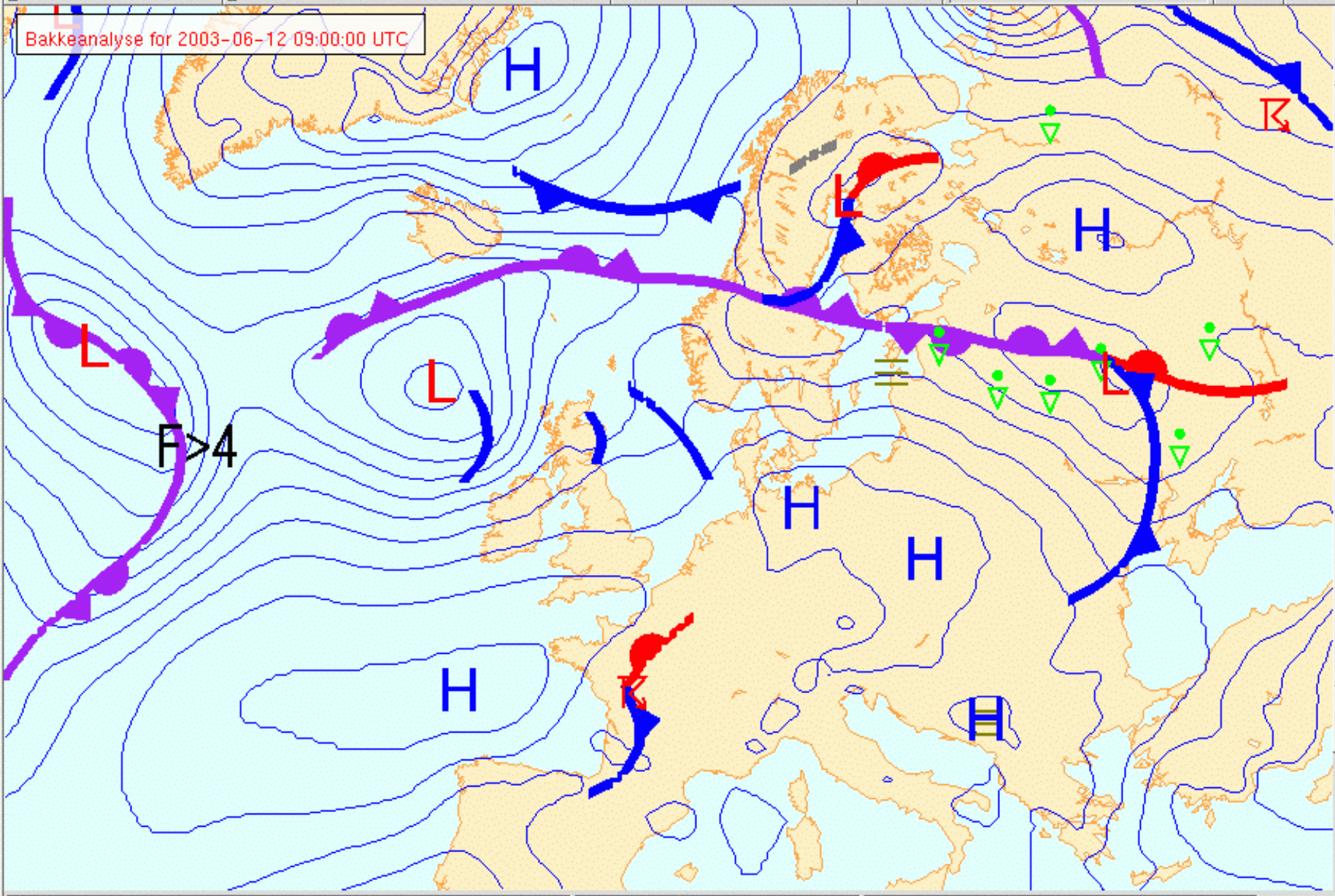


# DIANA

## Interactive tools

- Scalar field modification
- Drawing of fronts, significant weather symbols, etc.
- Combination of products from regional centers

Bakkeanalyse for 2003-06-12 09:00:00 UTC

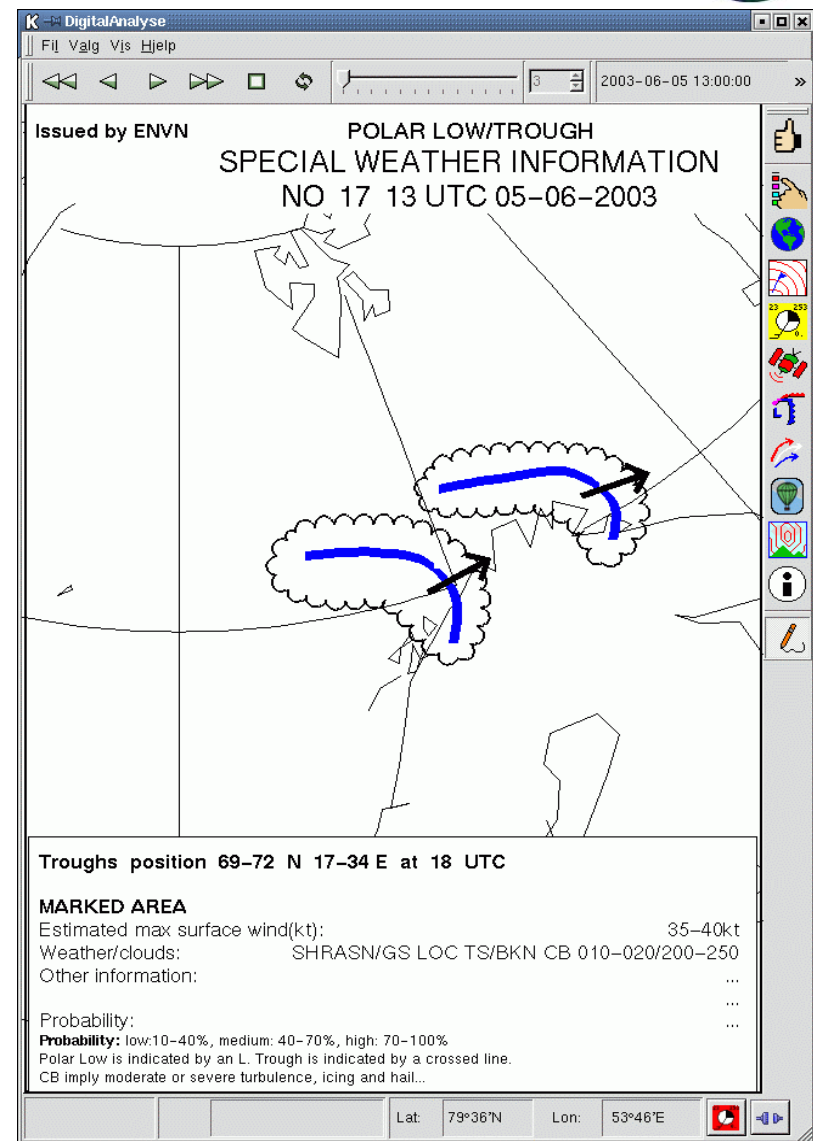
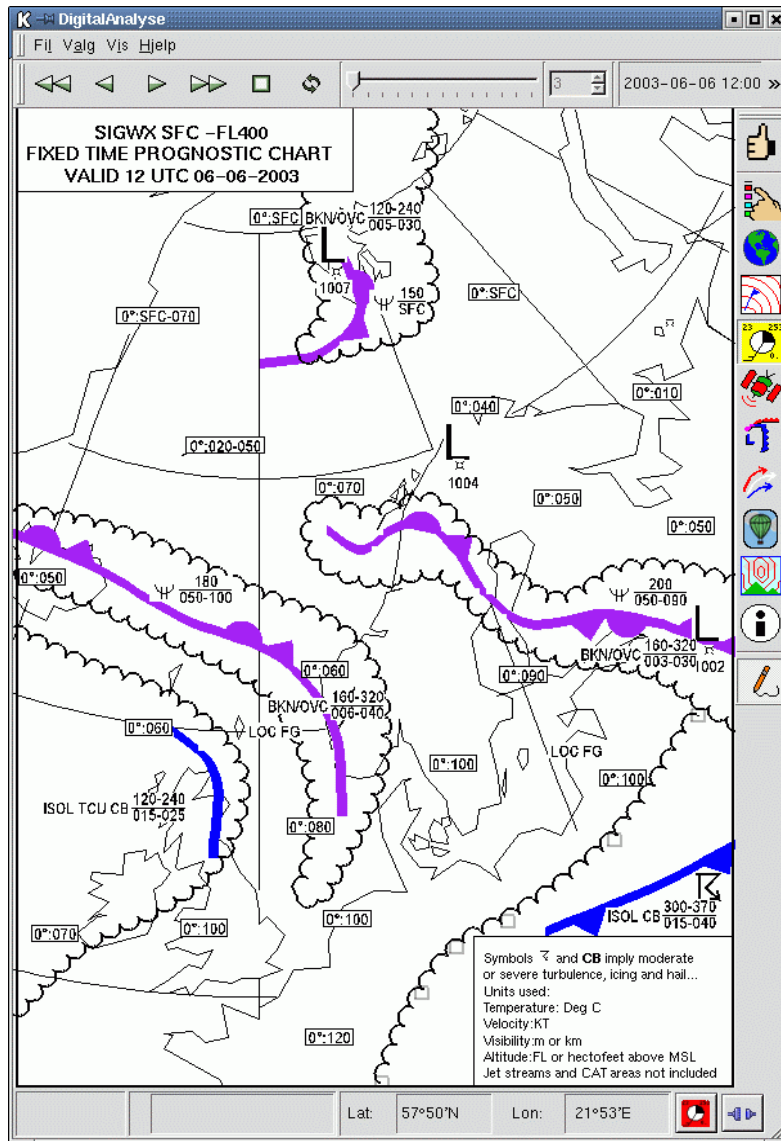


Vertical toolbar with icons for:

- Thumbs up
- Hand cursor
- Globe
- Map grid
- 23-253
- Weather icons (sun, cloud, rain, snow)
- Layers
- Hot air balloon
- Information
- Eraser

# Significant weather

# Polar low



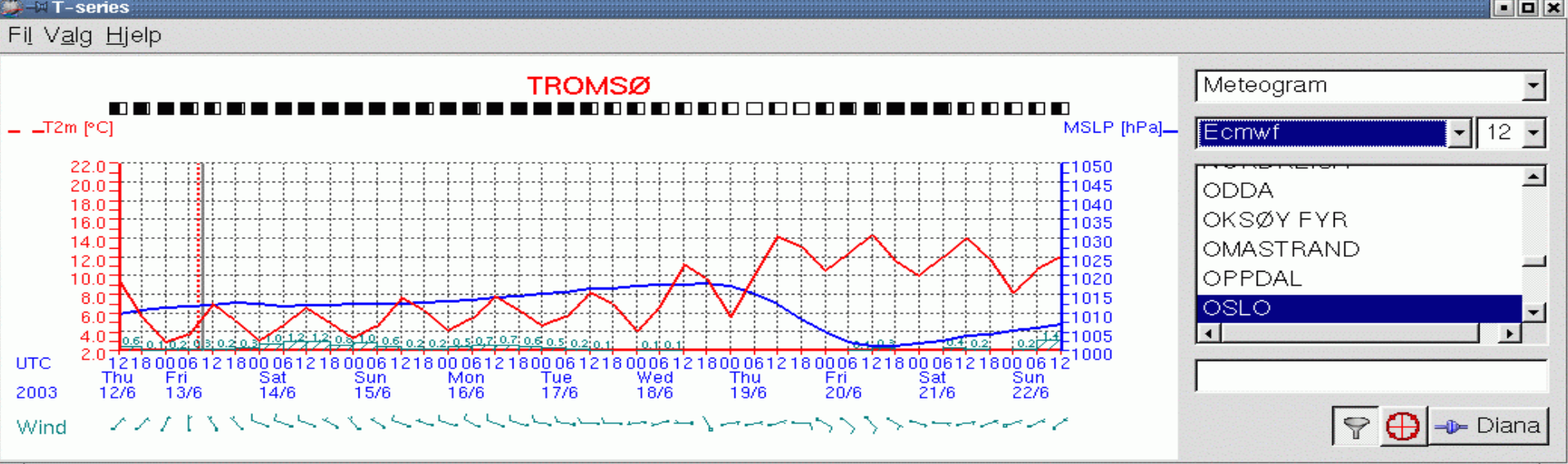


# Middleware - connecting applications

Sockets (Q.Sockets from the Qt toolkit)

Separate server application

Communication is based on text



Meteogram

Ecmwf 12

ODDA

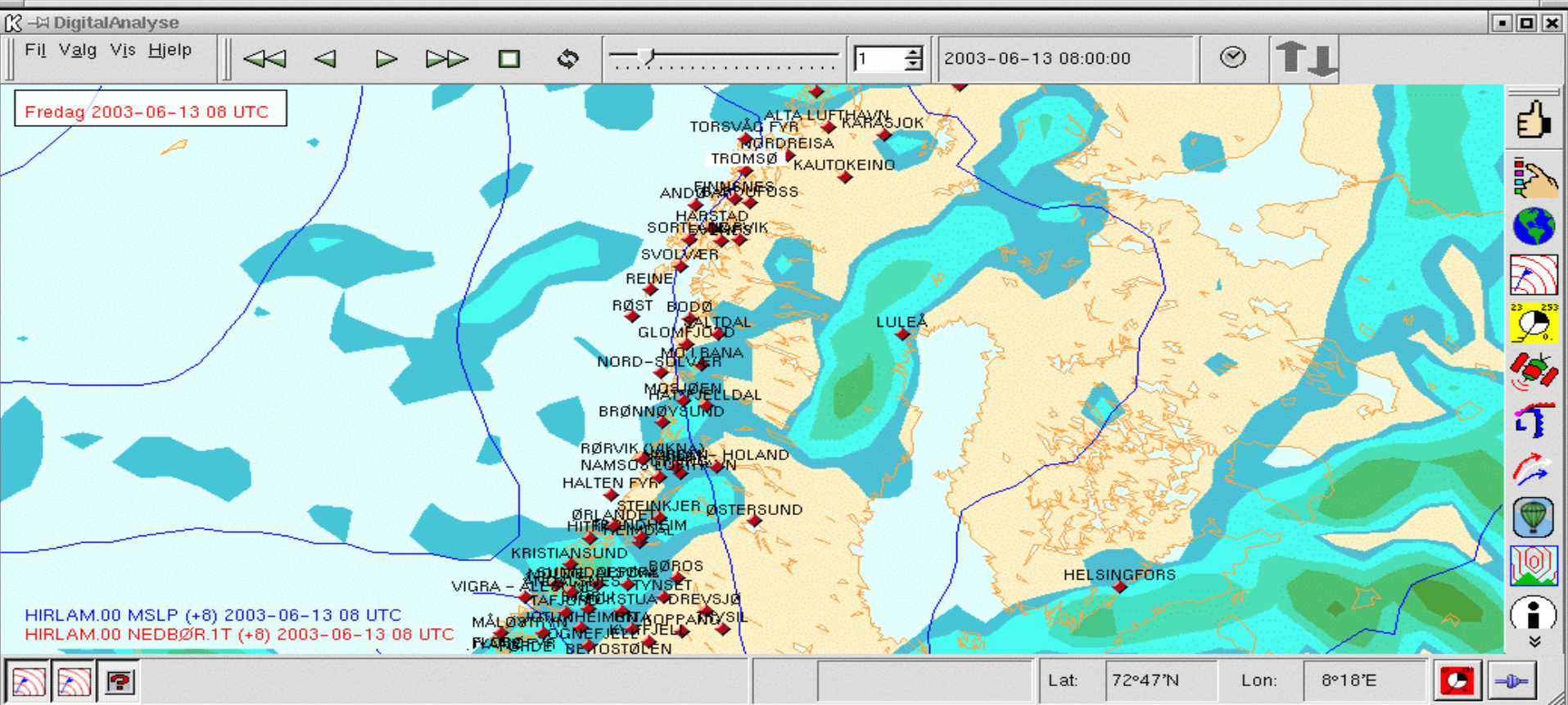
OKSØY FYR

OMASTRAND

OPPDAL

**OSLO**

Diana



Gyldige Varsler

KortTAF | LangTAF | Metar

Type	ICAO	Text	ST
TAF	ENML	050800Z 050918 25012KT 9999 -RA SCT020 BKN040 PROB30 TEMPO 0912 4000 TSRA BKN012CB=	
TAF	ENAL	050800Z 050918 22015KT 9999 -RA BKN020 PROB30 TEMPO 0912 VRB07KT 4000 TSRA BKN012CB=	
TAF	ENFG	050800Z 050917 VRB05KT 0500 FG VV002 TEMPO 0912 4000 SHRA BR BKN010 BECMG 1214 24012KT 9999 FEW010 BKN030=	
TAF	ENFL	050800Z 050918 19018KT 9999 -SHRA FEW006 BKN015CB TEMPO 0912 3000 -DZ BR BKN006 =	
TAF	ENGM	050800Z 050918 18012KT 2000 BR BKN002 TEMPO 0912 0500 FG BECMG 1012 24008KT 9999 SCT015 BKN020 PROB40 1215 4000 TSRA BKN012 SCT015CB=	
TAF	ENGC	050800Z 050918 26020KT 9999 SCT010 PROB30 0918 3000 BR BKN005=	
TAF	ENRY	050800Z 050918 21010KT 6000 SCT005 BKN015 TEMPO 0915 1500 SHRA BR BKN003 SCT015CB PROB30 0912 0800 TS FG=	

Varsel-Editering

KortTAF | LangTAF | Metar

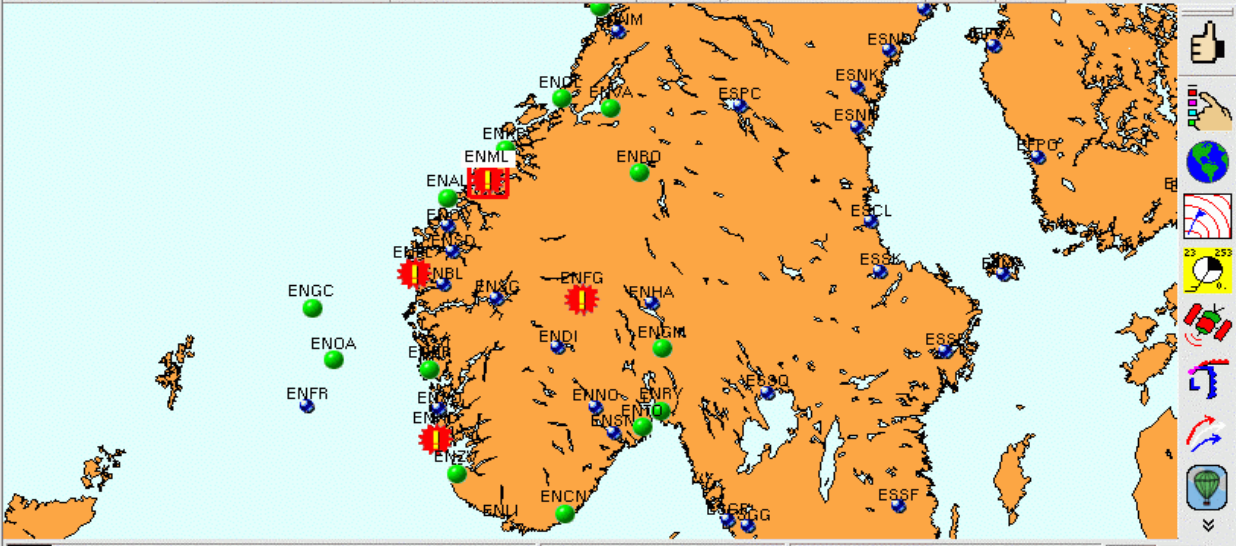
Type	ICAO	Text	ST	A
TAF	ENSB	050800Z 050915 26008KT 9999 FEW008 BKN035=		
TAF	ENBV	050800Z 050915 05010KT 9999 SCT015 BKN030 PROB40 TEMPO 0315 SCT008 BKN012=		<input checked="" type="checkbox"/>
TAF	ENVD	050800Z 050915 06008KT 9999 SCT015 BKN030 PROB40 TEMPO 0915 4000 -SHSNRA BKN008=		
TAF	ENKR	050800Z 050918 03008KT 9999 SCT010 BKN030 PROB40 TEMPO 0915 4000 -SHSNRA BKN008=		
TAF	ENHF	050800Z 050915 14010KT CAVOK=		

**TAF ENBV** 050800Z 050915 05010KT 9999 SCT015 BKN030 PROB40 TEMPO 0915 SCT008 BKN012=

**METAR**  
ENBV 050950Z 08009KT 9999 -RA SCT010 BKN033 03/M00 1019=  
ENBV 050920Z 07009KT 9999 SCT015 BKN030 03/M01 1020=

Test-database ● norway @ monsoon.oslo.dnmi.no Diana

Navigation controls: back, forward, stop, refresh, search, zoom in, zoom out, date/time: 2003-06-05 09:49:08



Molde/åro

**TAF ENML** 050800Z 050918 25012KT 9999 -RA SCT020 BKN040 PROB30 TEMPO 0912 4000 TSRA BKN012CB=

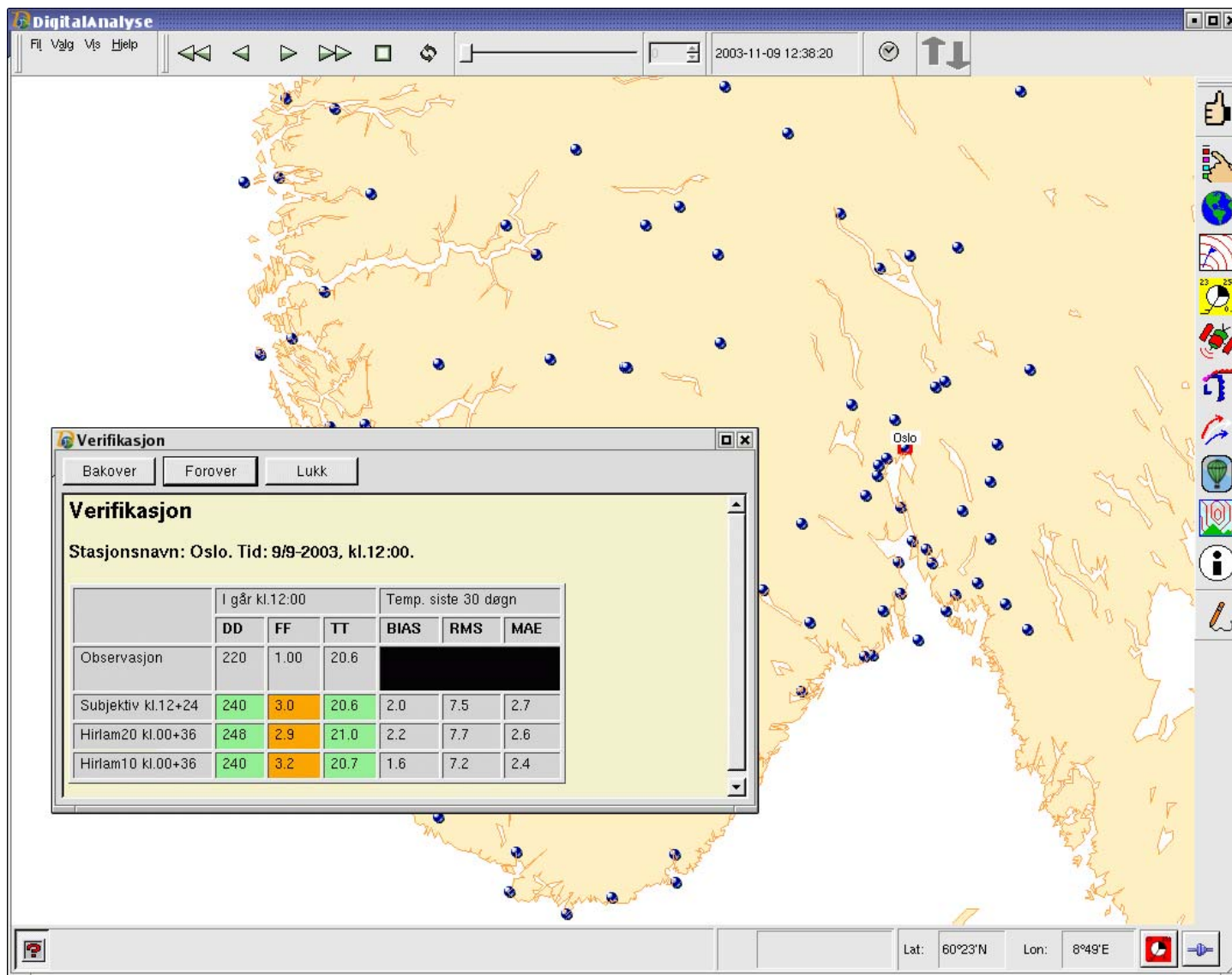
**METAR**  
 ENML 050950Z 32004KT 9999 -RA BKN040 16/13 Q1003=  
 ENML 050920Z 27004KT 9999 -RA BKN045 16/13 Q1002=  
 ENML 050850Z 25008KT 9999 -RA BKN050 16/13 Q1003=  
 ENML 050820Z 24010KT 9999 -RA SCT050 BKN080 16/13 Q1002=  
 ENML 050750Z 27004KT 9999 -RA FEW050 BKN080 16/13 Q1002=  
 ENML 050720Z 03002KT 9999 -RA FEW050 BKN080 17/13 Q1002=  
 ENML 050650Z 07008KT 9999 -RA FEW050 BKN080 17/13 Q1002=  
 ENML 050620Z 10008KT 9999 -RA FEW050 BKN080 17/13 Q1002=  
 ENML 050550Z 08008KT C...  
 ENML 050520Z 09008KT C...  
 ENML 050420Z 08010KT C...  
 ENML 042050Z 06005KT C...  
 ENML 042020Z 05005KT C...  
 ENML 041950Z 06003KT C...  
 ENML 041920Z 02005KT C...  
 ENML 041850Z 00000KT C...  
 ENML 041820Z 00000KT C...  
 ENML 041750Z 00000KT C...  
 ENML 041720Z 00000KT C...  
 ENML 041650Z 24003KT 9999 -RA FEW040 23/12 Q1014=  
 ENML 041620Z 24004KT 9999 FEW040 23/13 Q1014=  
 ENML 041550Z VRB03KT 9999 FEW040 23/12 Q1014=

modfly

ENML

DD amount[%]

Avbryt







**DigitalAnalyse**

File Valg Vis Hjelp

2003-06-10 08:31:16

### Monitoring of Textforecasts

- parsing/decoding of forecasts
- monitor against synops, NWP-data
- warnings as text and on map

**- MONQ -**

Eil Verktøy Innstillinger Hjelp

<b>Meldingstyper:</b> <input checked="" type="checkbox"/> Overvåking av Tekstvarslar <input checked="" type="checkbox"/> Overvåking av Observasjoner <input type="checkbox"/> test-informasjon	<b>Regioner:</b> <input checked="" type="checkbox"/> VA <input checked="" type="checkbox"/> VNN <input checked="" type="checkbox"/> VV	<b>Tekstvarselmeldinger:</b> <input type="checkbox"/> Vis varseltekst <input type="checkbox"/> Vis observasjoner
---	---	--

**[OBSERVASJONER]**  
Observert FF fra:  
synop 01086 tid:Onsdag 12:00 er: 14 m/s  
synop 01086 tid:Onsdag 13:00 er: 15 m/s

**Meldinger for: Hordaland Kyst**  
**[TEKSTVARSEL=vv12]**  
Tekstvarsel for FF (Hordaland Kyst) for tiden: Onsdag 12:00 til Torsdag 17:00 er: 7 m/s

Sist oppdatert: 14:26 Diana

Lat: 59°32'N Lon: 9°23'E



# DIANA - interfaces

- **Macros**
  - Predefined (products for specific tasks)
  - User defined
- **Full GUI control set**
- **Batch version - identical code base**



# DIANA

- Developed for operational use
- Fast development cycle - monthly updates
- Small development crew in close cooperation with forecasters
- Increased usage by researchers
- New applications (HQC)